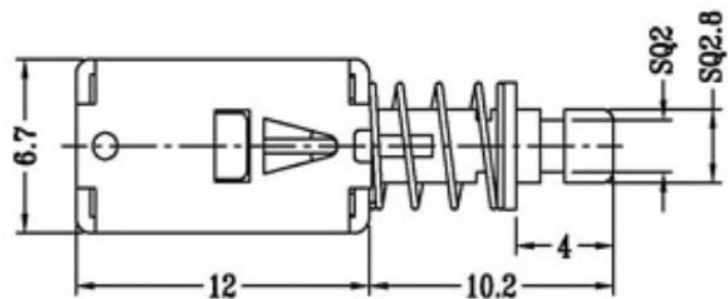
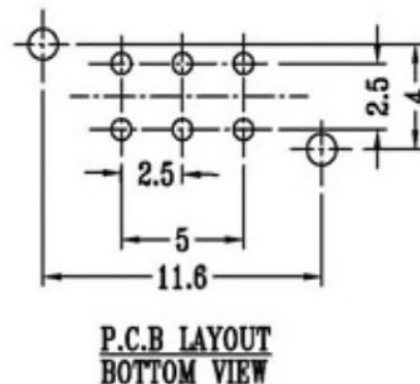
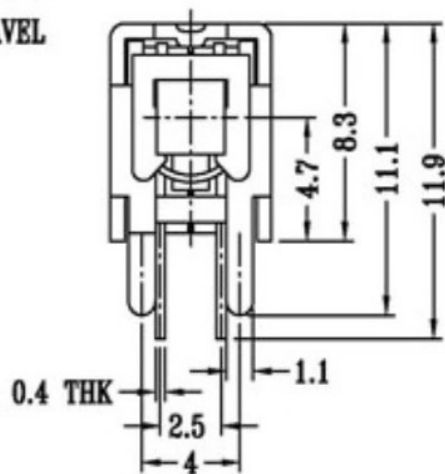
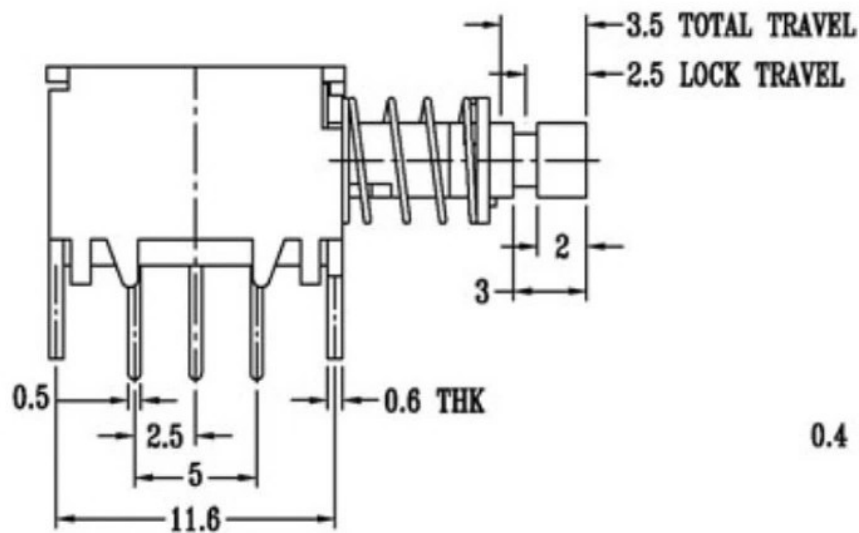
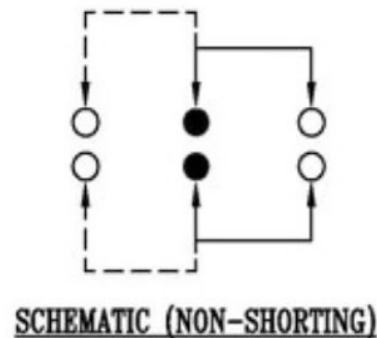


CAD FILE:



单位: mm



注: "*"表示关键尺寸(6个)

| NO. | PARTS | MATERIALS | Q'TY | FINISHING |
|-----|--------------|----------------|------|-----------|
| 9 | CONTACT CLIP | PBS C5210R-EH | 1 | Ag CLAD |
| 8 | SPRING PLATE | PBS STRIP | 1 | Ni PLATED |
| 7 | BASE | PHENOLIC RESIN | 1 | NATURAL |
| 6 | TERMINAL | BRASS STRIP | 3 | Ag PLATED |
| 5 | KNOB | PA66 | 1 | BLUE |
| 4 | BLOCK | STEEL STRIP | 1 | Ni PLATED |
| 3 | SPRING | STEEL WIRE | 1 | Ni PLATED |
| 2 | CAM STICK | PBS WIRE | 1 | Ni PLATED |
| 1 | FRAME | STEEL STRIP | 1 | Ni PLATED |

| TOLERANCE UNLESS SPECIFIED | | | | | |
|-------------------------------|----------|-------|------------|--------------------------|-----------|
| WITHIN 1.5mm | : ±0.1mm | A | 2012-8-22 | 初版 | |
| OVER 1.5mm | : ±0.2mm | ISSUE | DATE | DESCRIPTIONS OF REVISION | APPD. |
| TITLE : PUSH SWITCH | | | UNIT : mm | DRWG NO.: | |
| MODEL: | | | SCALE: 3:1 | DWN. | 2012-8-22 |
| 广东科斯达开关厂 | | | CHK'D | | |
| | | | APPD. | | 2012-8-22 |