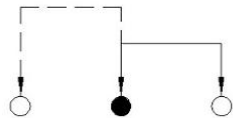
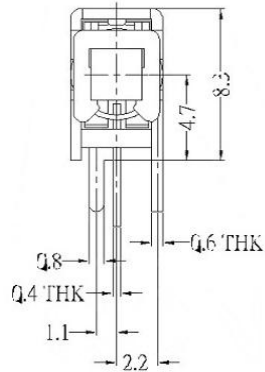
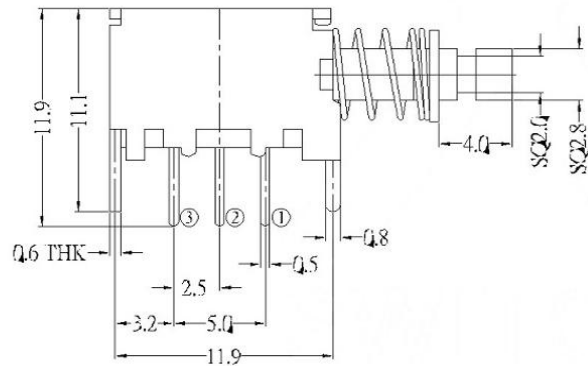


P.C.B LAYOUT MOUNTING PATTERN



SCHEMATIC (NON-SHORTING)

FEATURES

- Light operating force.
- Long term low contact resistance.
- Momentary or latching operation.
- Short stroke 3.0mm to latch.

SPECIFICATIONS

1.ELECTRICAL

● Contact rating	0.3A, 50VDC
● Contact resistance	50mWMax.
● Insulation resistance	100MΩMin. at 250VDC
● Dielectric strength	250VAC Min. for 60 sec.

2.MECHANICAL AND ENVIRONMENTAL

● Temperature rating	Operating: -15°C to +55°C Storage: -25°C to +65°C
● Operation force	250±80gf
● Stroke	Lock Stroke: 3.0±0.3mm Full Stroke: 3.5±0.3mm
● Operating life	full load: 1x10 ⁴ cycles no load: 1x10 ⁵ cycles

OPERATION	W:NO LOCK Z:LOCK
-----------	------------------

ITEM	PAPT NAMF	TER.NO	QTY	MATERIAL	FINISHING	REMARK
⑦	Bottom plate	—	1	Phenolic Resin	Natural	—
⑥	Contact	—	1	Phosphor bronze	ag Plated	—
⑤	Terminal	—	3	Brass	Plating silvering	—
④	Spring	—	1	Sus	Natural	—
③	Base	—	1	Spcc	Plating Nickel	—
②	Crochet Needle	—	1	Sus	Natural	—
①	Keystake	—	1	Pa66		—

MARK	DESCRIPTION	DATE	REVISED	APPROVED	ANGLAR	±5°	DSND	DATE	SCALE: N/A	MODEL TYPE:		
Δ X					X.X	±0.2mm	DWN	DATE	VIEW:	KEY SWITCH		
Δ X					X.XX	±0.1mm	CHKD	DATE	UNIT: mm	PART NO.:		
Δ X					X.XXX	±0.05mm	APPD	DATE	SIZE: A4	DWG NO.:		
							UNSPECIFIED TOLERANCES			KOSOD TECHNOLOGY CO., LTD		
REVISIONS									WEIGHT		SHEET	REVISION
www.bodongkaiguan.net www.ksdkg.com									1.0g		1/1	A0