

F

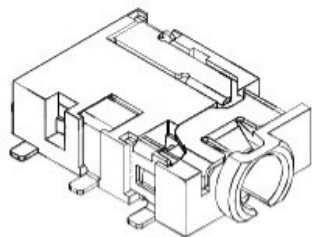
E

D

C

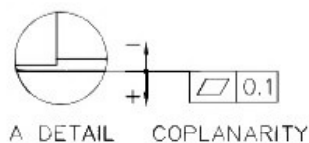
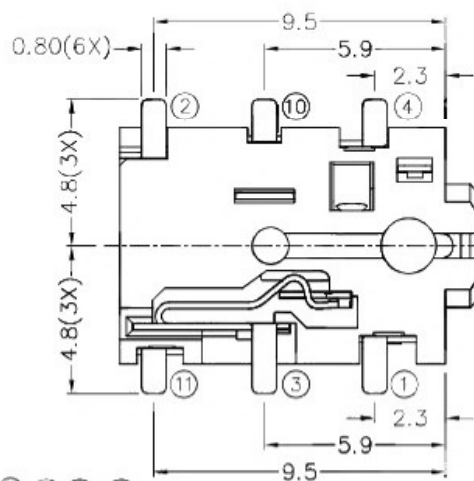
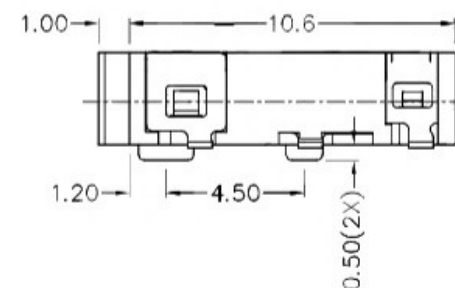
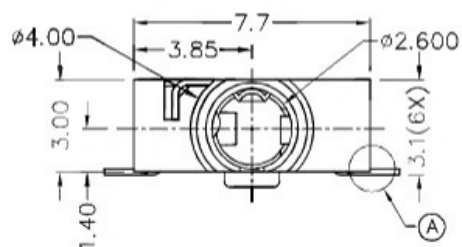
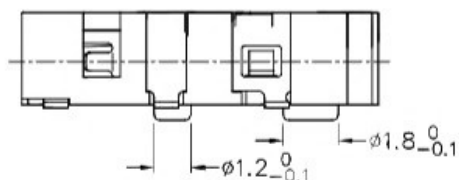
B

A



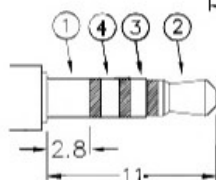
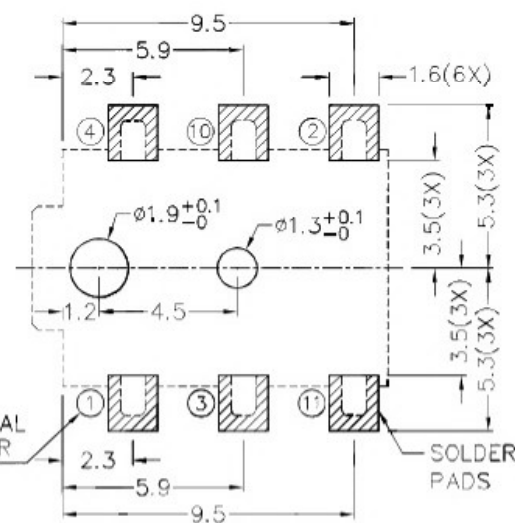
RoHS  
Compliant

ZONE	SYMBOL	REVISION	APPROVAL	DATE

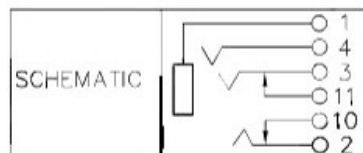


\* MATERIAL

TERMINAL 1 : COPPER ALLOY  
 TERMINAL 2 : COPPER ALLOY  
 TERMINAL 3 : COPPER ALLOY  
 TERMINAL 4 : COPPER ALLOY  
 TERMINAL 10 : COPPER ALLOY  
 TERMINAL 11 : COPPER ALLOY  
 HOUSING : HIGH TEMP. PLASTIC



2.5mm SPECIAL MATE PLUG



RECOMMENDED PCB LAYOUT  
 TOLERANCE: ±0.05  
 (TOP VIEW)

广东科斯达开关厂

PART NAME	2.5mm SMD STEREO JACK	TOLERANCE UNLESS	0.0±0.2	UNIT:	mm	DESIGN	H.L.TAN	DATE	1-6-2011	SCALE	4:1
PART NO.		OTHERWISE SPECIFIED:	0.00±0.1 0.000±0.05				DRAWING	H.Q.ZHOU	DATE	13-3-2017	MATERIAL
						CHECK	T.Y.LI	DATE	13-3-2017	DWG. NO.	TZ\TG403D-A/1.0
						APPROVAL		DATE		SHEET	

F

E

D

C

B

A