

F

E

D

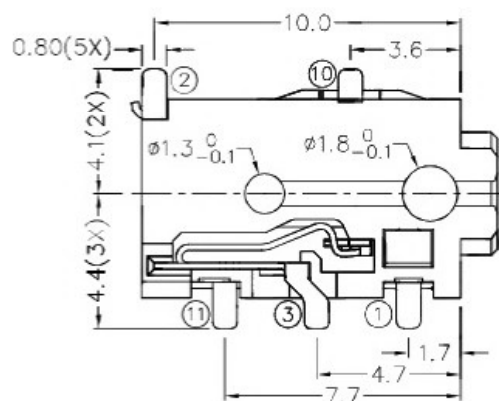
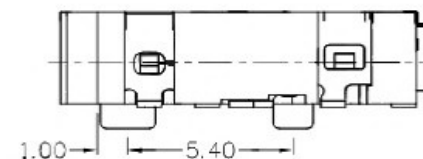
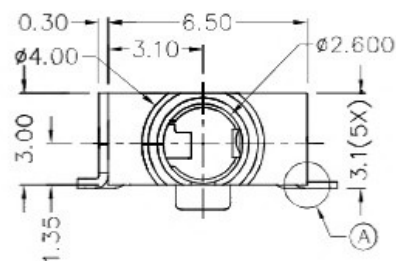
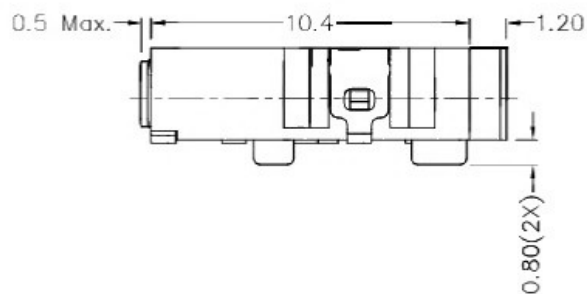
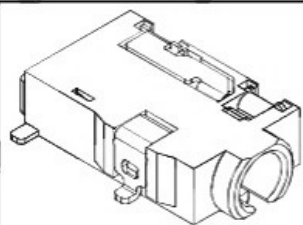
C

B

A

ZONE	SYMBOL	REVISION	APPROVAL	DATE

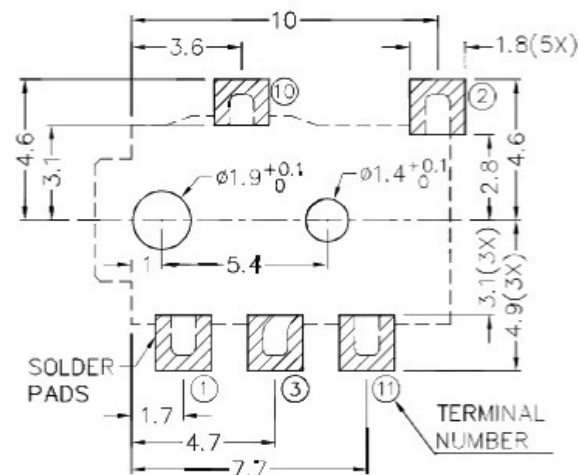
RoHS
Compliant



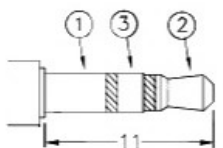
A DETAIL COPLANARITY

* MATERIAL

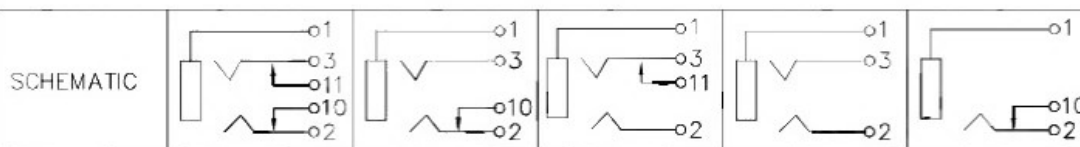
TERMINAL 1 : COPPER ALLOY
 TERMINAL 2 : COPPER ALLOY
 TERMINAL 3 : COPPER ALLOY
 TERMINAL 10 : BRASS
 TERMINAL 11 : COPPER ALLOY
 HOUSING : HIGH TEMP. PLASTIC



RECOMMENDED PCB LAYOUT
 TOLERANCE: ± 0.05
 (TOP VIEW)




$\phi 2.5$ MATE PLUG



 广东科斯达开关厂

DESIGN	J.X.KUANG	DATE	21-5-2004	SCALE	4:1
DRAWING	H.CH.OU	DATE	7-3-2017	MATERIAL	*
CHECK	T.Y.LI	DATE	7-3-2017	DWG. NO.	TZ\TG287D-A/1.0
APPROVAL		DATE		SHEET	

PART NAME	2.5mm SMD STEREO JACK	TOLERANCE UNLESS	0.0 ± 0.2	UNIT:	
PART NO.		OTHERWISE SPECIFIED:	0.00 ± 0.1 0.000 ± 0.05	mm	

F

E

D

C

B

A