

F

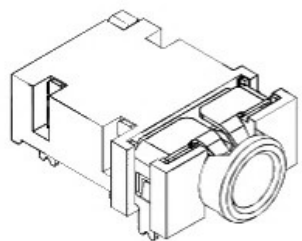
E

D

C

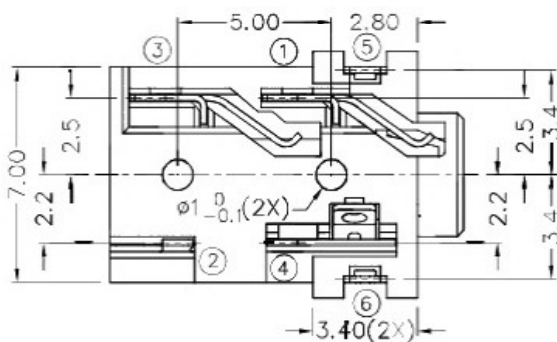
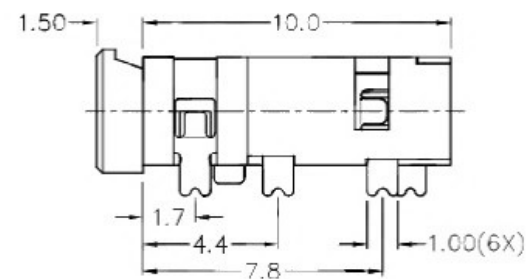
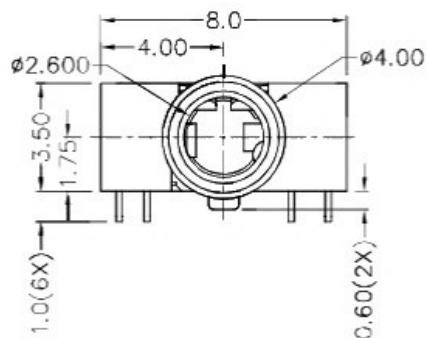
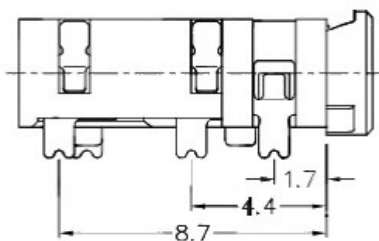
B

A



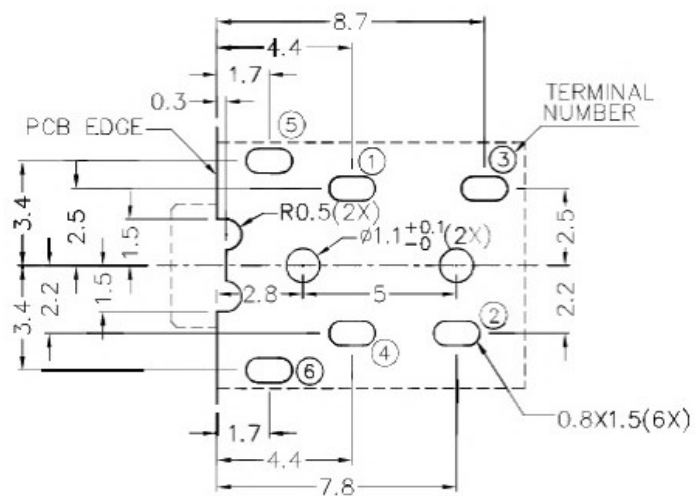
RoHS  
Compliant

| ZONE | SYMBOL | REVISION | APPROVAL | DATE |
|------|--------|----------|----------|------|
|      |        |          |          |      |
|      |        |          |          |      |
|      |        |          |          |      |

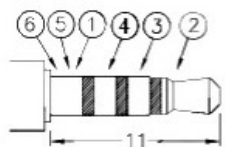


\* MATERIAL

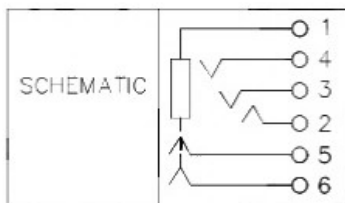
TERMINAL 1 : COPPER ALLOY  
 TERMINAL 2 : COPPER ALLOY  
 TERMINAL 3 : COPPER ALLOY  
 TERMINAL 4 : COPPER ALLOY  
 TERMINAL 5 : COPPER ALLOY  
 TERMINAL 6 : COPPER ALLOY  
 HOUSING : HIGH TEMP. PLASTIC



RECOMMENDED PCB LAYOUT  
 TOLERANCE:  $\pm 0.05$   
 (TOP VIEW)



$\phi 2.5$  MATE PLUG



广东科斯达开关厂

|           |                   |                      |                                    |       |    |          |         |          |            |           |                |
|-----------|-------------------|----------------------|------------------------------------|-------|----|----------|---------|----------|------------|-----------|----------------|
| PART NAME | 2.5mm STEREO JACK | TOLERANCE UNLESS     | 0.0 $\pm$ 0.2                      | UNIT: | mm | DESIGN   | G.P.YI  | DATE     | 17-11-2008 | SCALE     | 4:1            |
| PART NO.  |                   | OTHERWISE SPECIFIED: | 0.00 $\pm$ 0.1<br>0.000 $\pm$ 0.05 |       |    |          | DRAWING | H.Q.ZHOU | DATE       | 13-3-2017 | MATERIAL       |
|           |                   |                      |                                    |       |    | CHECK    | T.Y.LI  | DATE     | 13-3-2017  | DWG. NO.  | TZ\TG408-A/1.0 |
|           |                   |                      |                                    |       |    | APPROVAL |         | DATE     |            | SHEET     |                |

F

E

D

C

B

A