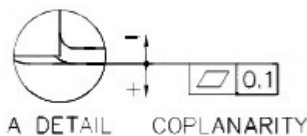
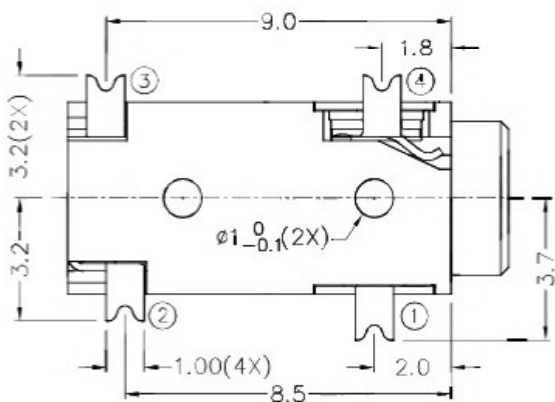
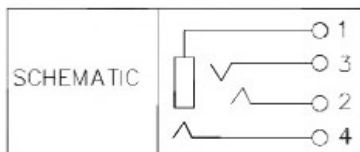
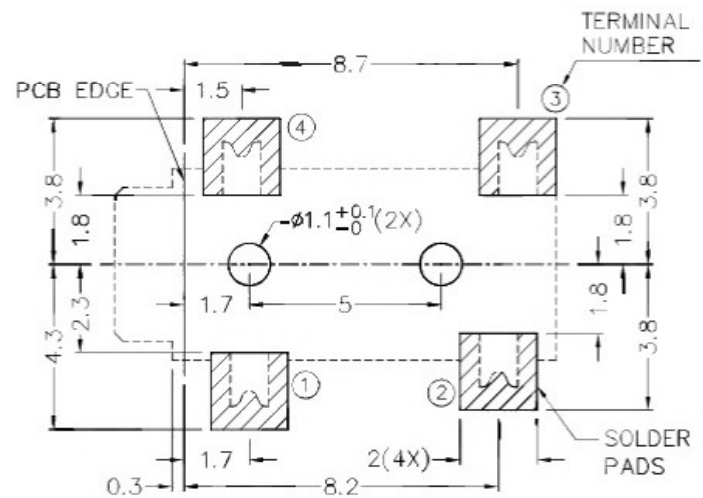


RoHS
Compliant

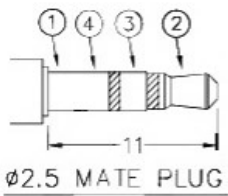


*** MATERIAL**

- TERMINAL 1 : COPPER ALLOY
- TERMINAL 2 : COPPER ALLOY
- TERMINAL 3 : COPPER ALLOY
- TERMINAL 4 : COPPER ALLOY
- HOUSING : HIGH TEMP. PLASTIC



RECOMMENDED PCB LAYOUT
TOLERANCE: ±0.05
(TOP VIEW)



广东科斯达开关厂

PART NAME		2.5mm SMD STEREO JACK		TOLERANCE UNLESS		0.0±0.2		UNIT:		mm	
PART NO.				OTHERWISE SPECIFIED:		0.00±0.1					
						0.000±0.05					
								DESIGN		T.Y.LI	
								DATE		14-1-2006	
								DRAWING		J.CH.OU	
								DATE		10-3-2017	
								CHECK		H.L.TAN	
								DATE		10-3-2017	
								APPROVAL			
								DATE			
								SCALE		5:1	
								MATERIAL		*	
								DWG. NO.		TZ\TG294D-A/1.0	
								SHEET			