

F

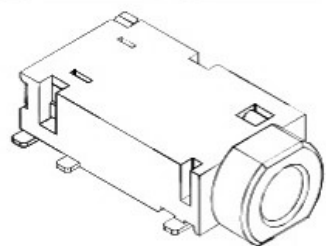
E

D

C

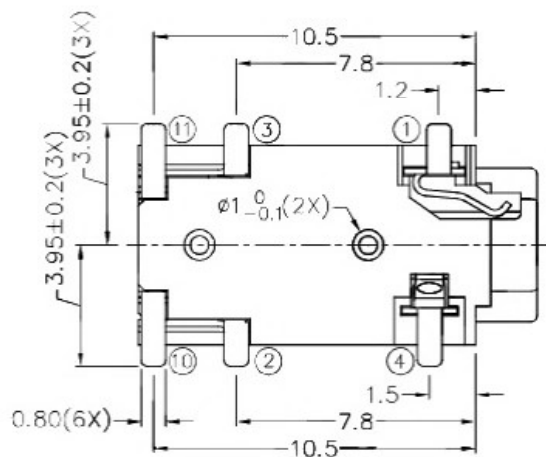
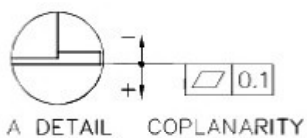
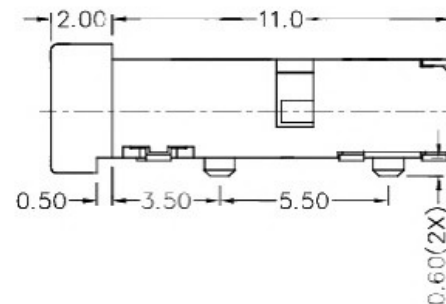
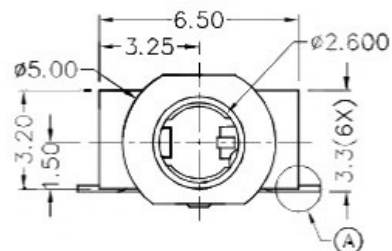
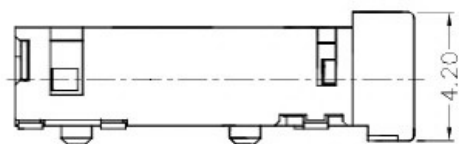
B

A



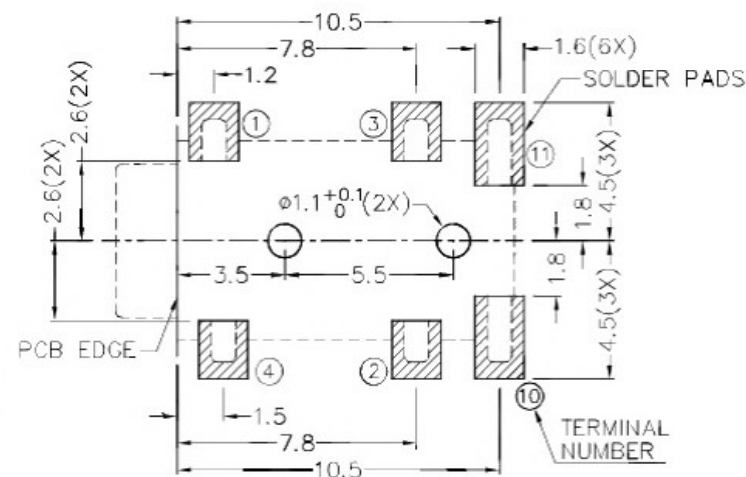
RoHS
Compliant

ZONE	SYMBOL	REVISION	APPROVAL	DATE

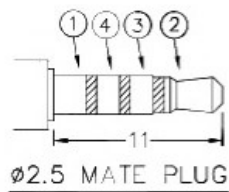
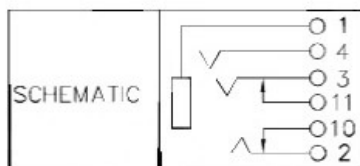


* MATERIAL

TERMINAL 1 : COPPER ALLOY
 TERMINAL 2 : COPPER ALLOY
 TERMINAL 3 : COPPER ALLOY
 TERMINAL 4 : COPPER ALLOY
 TERMINAL 10 : COPPER ALLOY
 TERMINAL 11 : COPPER ALLOY
 HOUSING : HIGH TEMP. PLASTIC



RECOMMENDED PCB LAYOUT
 TOLERANCE: ±0.05
 (TOP VIEW)



Ø2.5 MATE PLUG

广东科斯达开关厂

DESIGN	T.Y.LI	DATE	2-1-2008	SCALE	4:1
DRAWING	Y.J.GUO	DATE	13-3-2017	MATERIAL	*
CHECK	H.L.TAN	DATE	13-3-2017	DWG. NO.	TZ\TG405D-A/1.0
APPROVAL		DATE		SHEET	

PART NAME 2.5mm SMD STEREO JACK

TOLERANCE UNLESS 0.0±0.2

UNIT: mm

OTHERWISE SPECIFIED: 0.00±0.1
0.000±0.05

F

E

D

C

B

A