

F

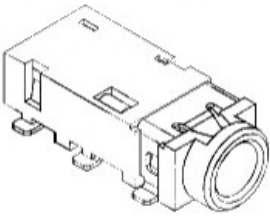
E

D

C

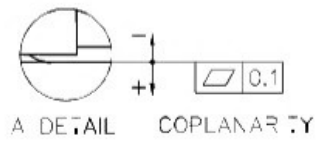
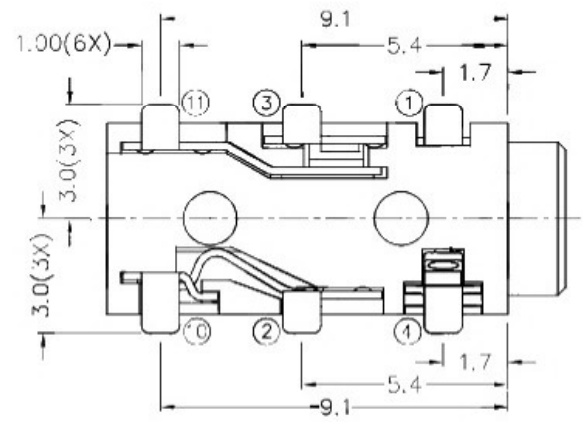
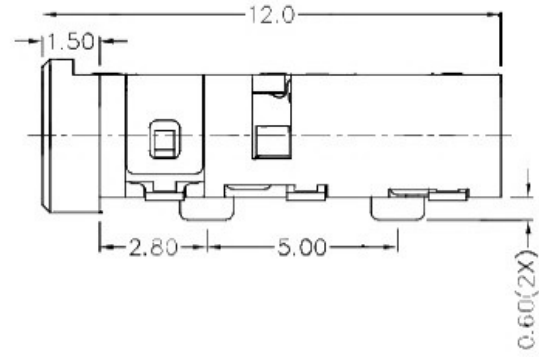
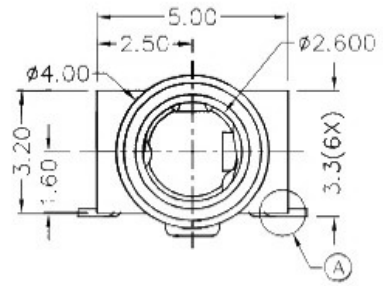
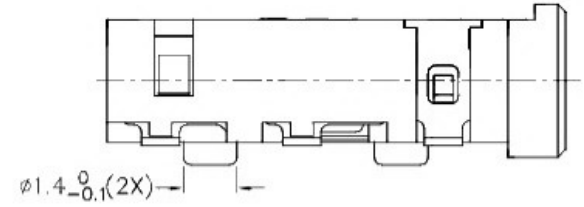
B

A

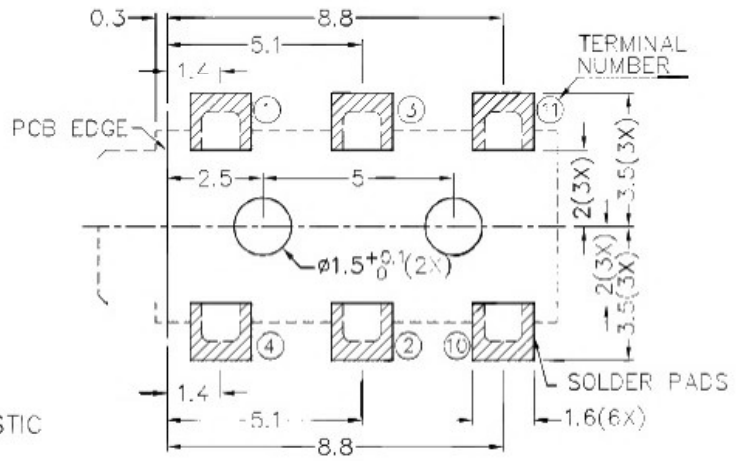


RoHS Compliant

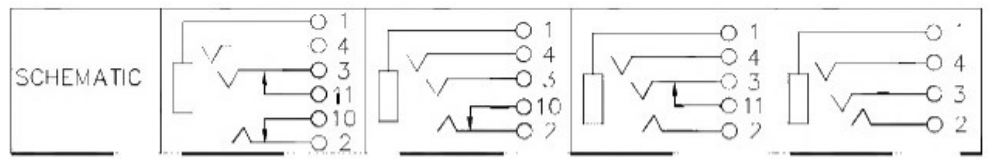
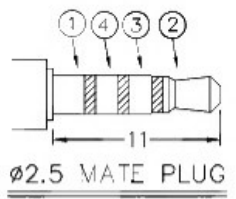
ZONE	SYMBOL	REVISION	APPROVAL	DATE



**\* MATERIAL**  
 TERMINAL 1 : COPPER ALLOY  
 TERMINAL 2 : COPPER ALLOY  
 TERMINAL 3 : COPPER ALLOY  
 TERMINAL 4 : COPPER ALLOY  
 TERMINAL 10 : BRASS  
 TERMINAL 11 : BRASS  
 HOUSING : HIGH TEMP. PLASTIC



RECOMMENDED PCB LAYOUT  
 TOLERANCE: ±0.05  
 (TOP VIEW)



**广东科斯达开关厂**

DESIGN	L.L.ZHANG	DATE	2-9-2005	SCALE	5:1
DRAWING	J.CHOU	DATE	7-3-2017	MATERIAL	*
CHECK	T.Y.LI	DATE	7-3-2017	DWG. NO.	T7\TG286D-A/1.0
APPROVAL		DATE		SHEET	

PART NAME	2.5mm SMD STEREO JACK	TOLERANCE UNLESS	0.0±0.2	UNIT:
PART NO.		OTHERWISE SPECIFIED:	0.00±0.1 0.000±0.05	

F

E

D

C

B

A