

F

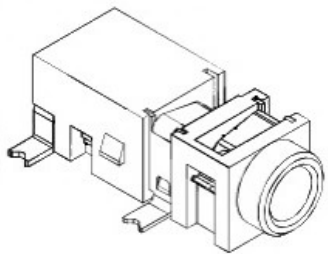
E

D

C

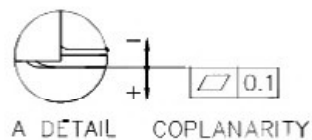
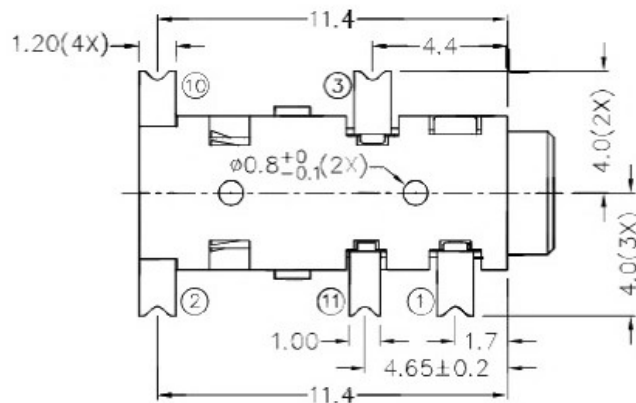
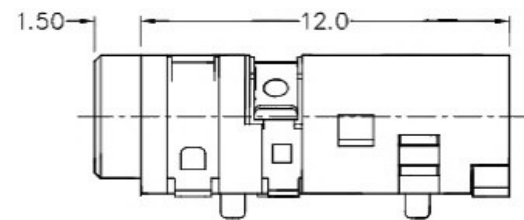
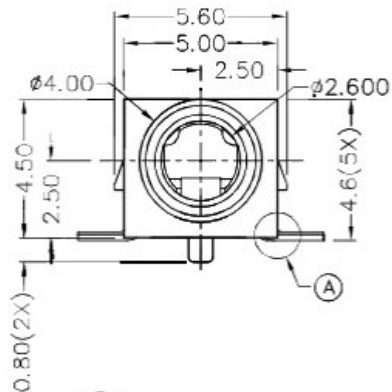
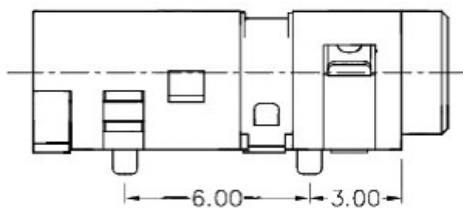
B

A



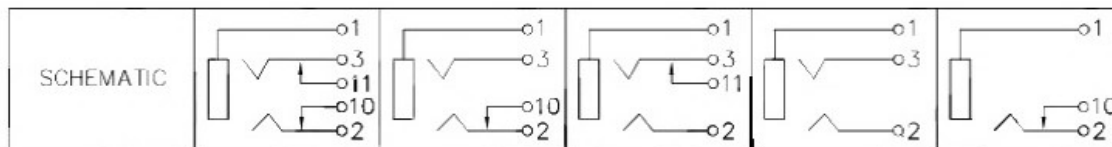
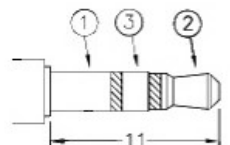
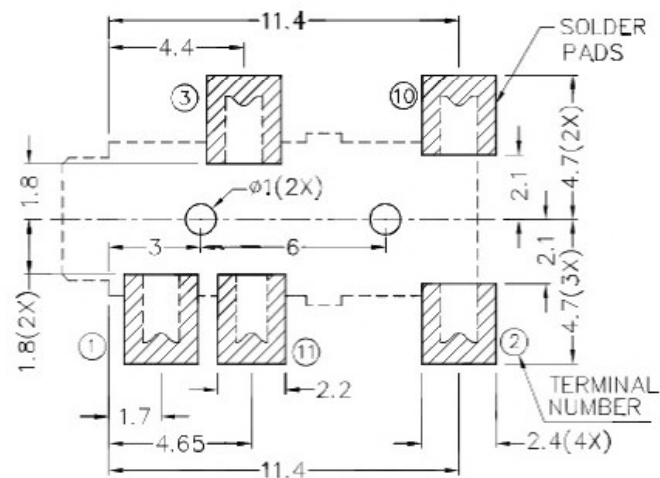
RoHS
Compliant

ZONE	SYMBOL	REVISION	APPROVAL	DATE



* MATERIAL

TERMINAL 1 : COPPER ALLOY
 TERMINAL 2 : COPPER ALLOY
 TERMINAL 3 : COPPER ALLOY
 TERMINAL 10 : BRASS
 TERMINAL 11 : BRASS
 HOUSING : HIGH TEMP. PLASTIC



RECOMMENDED PCB LAYOUT
 TOLERANCE: ±0.05
 (TOP VIEW)

广东科斯达开关厂

PART NAME 2.5mm SMD STEREO JACK
 PART NO.

TOLERANCE UNLESS 0.0±0.2
 OTHERWISE SPECIFIED: 0.00±0.1
 0.000±0.05

UNIT: mm

DESIGN	J.X.KUANG	DATE	28-4-2005	SCALE	4:1
DRAWING	T.Y.LI	DATE	9-3-2017	MATERIAL	*
CHECK	H.L.TAN	DATE	9-3-2017	DWG. NO.	TZ\TG291D-A/1.0
APPROVAL		DATE		SHEET	

F

E

D

C

B

A