

F

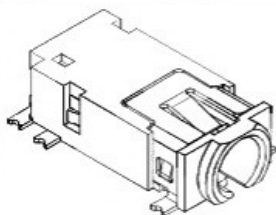
E

D

C

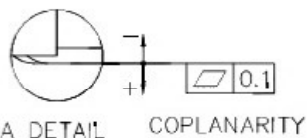
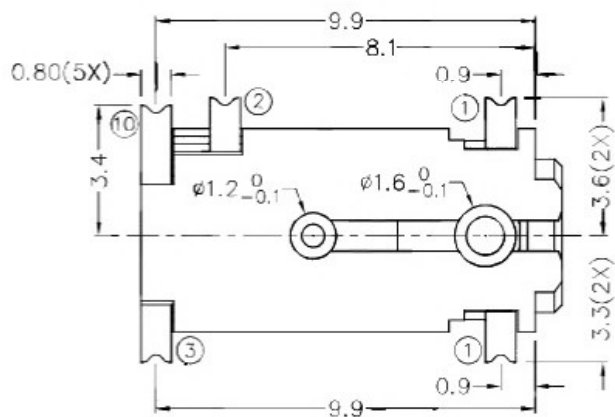
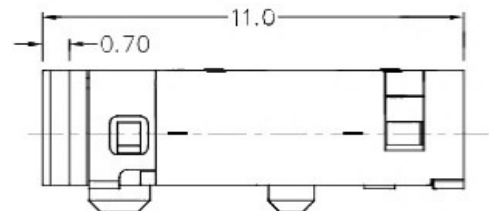
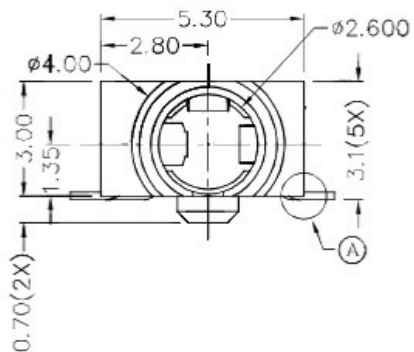
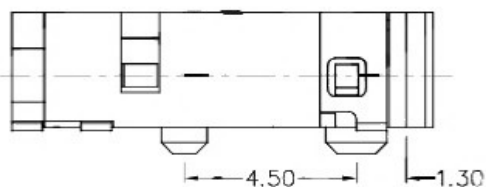
B

A



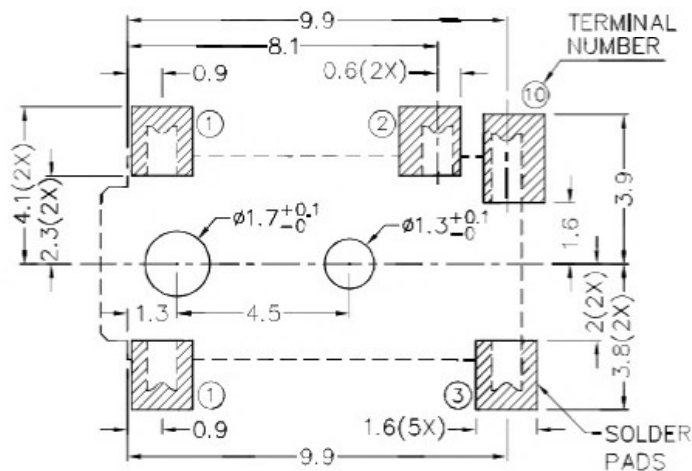
RoHS  
Compliant

ZONE	SYMBOL	REVISION	APPROVAL	DATE

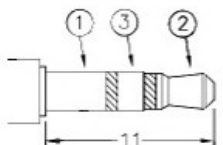


\* MATERIAL

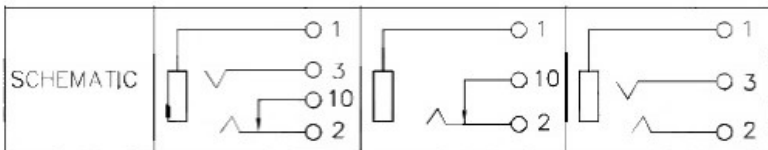
TERMINAL 1 : COPPER ALLOY  
 TERMINAL 2 : COPPER ALLOY  
 TERMINAL 3 : COPPER ALLOY  
 TERMINAL 10: BRASS  
 HOUSING : HIGH TEMP. PLASTIC



RECOMMENDED PCB LAYOUT  
 TOLERANCE: ±0.05  
 (TOP VIEW)



∅2.5 MATE PLUG



广东科斯达开关厂

PART NAME 2.5mm SMD STEREO JACK  
 PART NO.

TOLERANCE UNLESS 0.0±0.2  
 OTHERWISE SPECIFIED: 0.00±0.1  
 0.00±0.05

UNIT: mm



DESIGN	T.Y.LI	DATE	10-8-2005	SCALE	5:1
DRAWING	Y.J.GUO	DATE	9-3-2017	MATERIAL	*
CHECK	H.L.TAN	DATE	9-3-2017	DWG. NO.	TZ\TG2920-A/1.0
APPROVAL		DATE		SHEET	

F

E

D

C

B

A