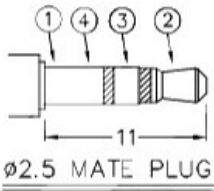
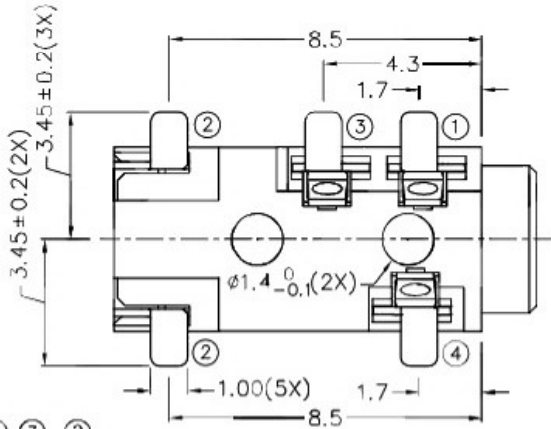
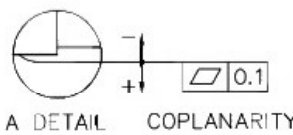
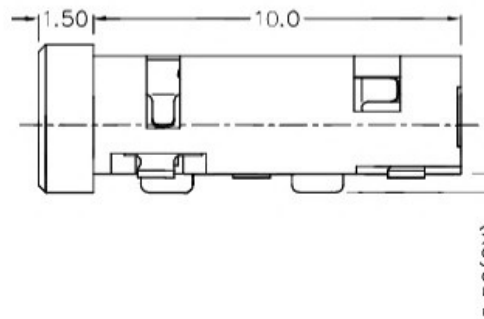
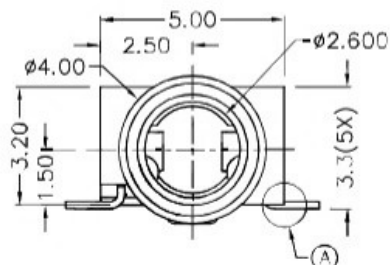
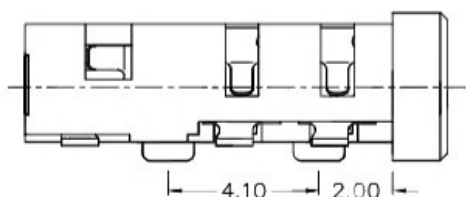
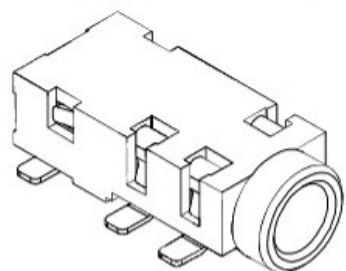
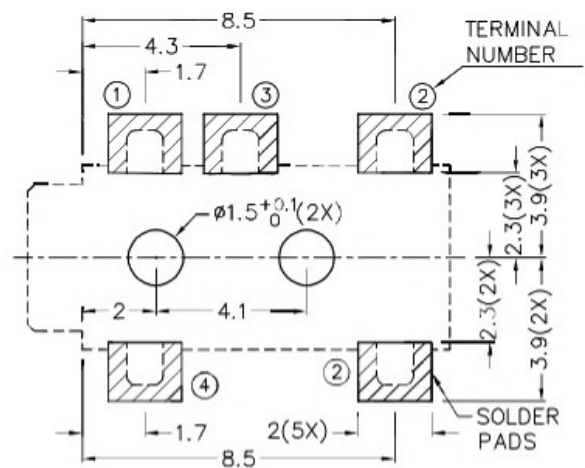
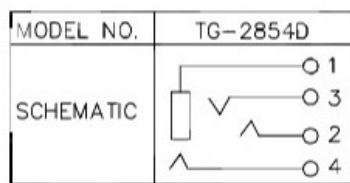


ZONE	SYMBOL	REVISION	APPROVAL	DATE

RoHS
Compliant



* MATERIAL
 TERMINAL 1 : COPPER ALLOY
 TERMINAL 2 : COPPER ALLOY
 TERMINAL 3 : COPPER ALLOY
 TERMINAL 4 : COPPER ALLOY
 HOUSING : HIGH TEMP. PLASTIC



广东科斯达开关厂

PART NAME	2.5mm SMD STEREO JACK	TOLERANCE UNLESS	0.0±0.2	UNIT:
PART NO.		OTHERWISE SPECIFIED:	0.00±0.1 0.000±0.05	

DESIGN	J.X.KUANG	DATE	2-9-2004	SCALE	5:1
DRAWING	T.Y.LI	DATE	22-9-2016	MATERIAL	*
CHECK	H.L.TAN	DATE	22-9-2016	DWG. NO.	TZ\TG285D-A/1.0
APPROVAL		DATE	23-9-2016	SHEET	