

F

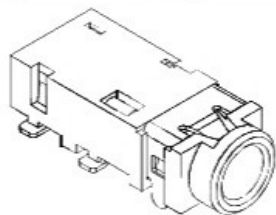
E

D

C

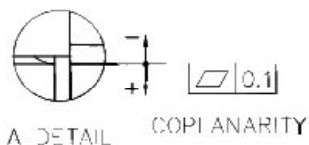
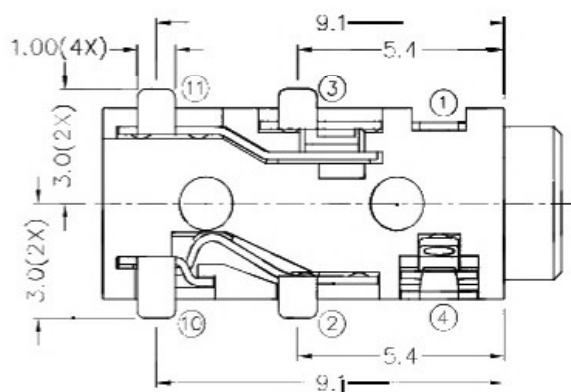
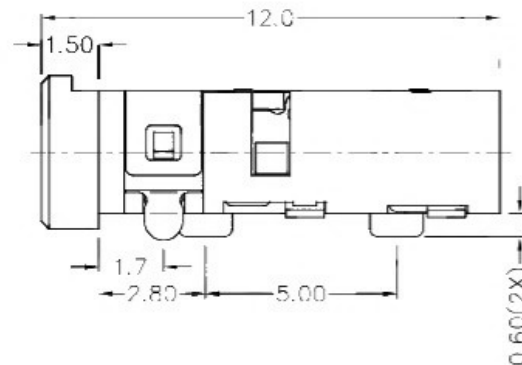
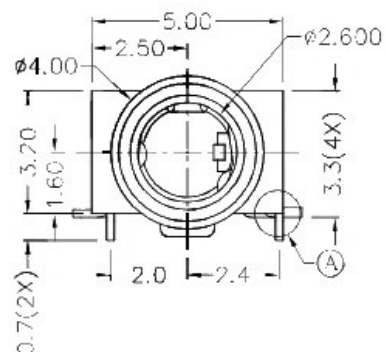
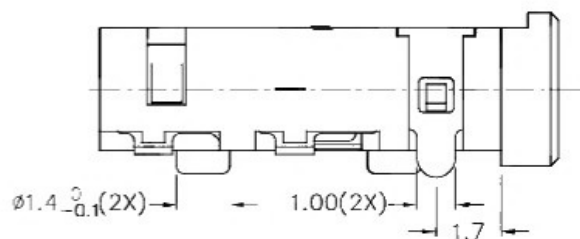
B

A



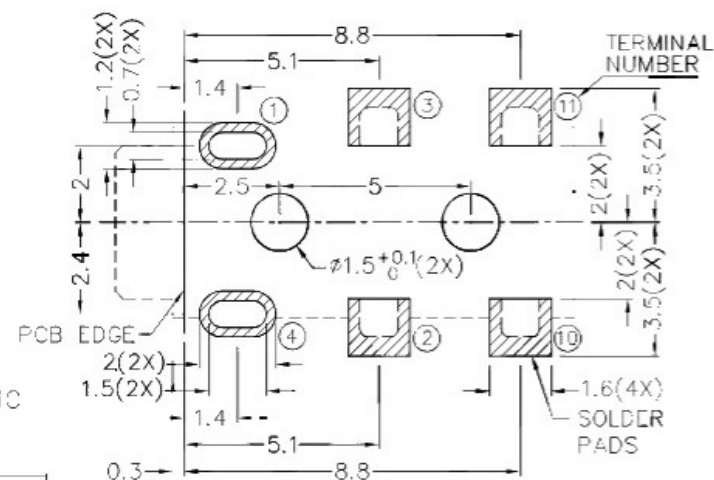
RoHS
Compliant

ZONE	SYMBOL	REVISION	APPROVAL	DATE

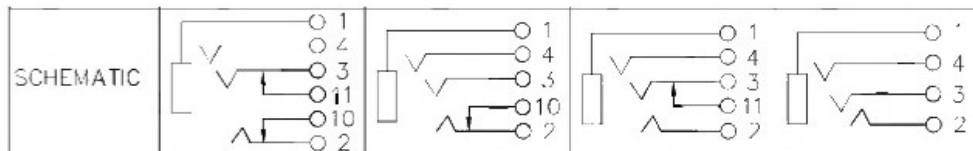
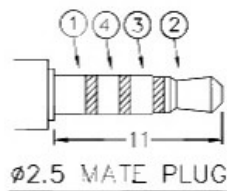


*** MATERIAL**

TERMINAL 1 : COPPER ALLOY
 TERMINAL 2 : COPPER ALLOY
 TERMINAL 3 : COPPER ALLOY
 TERMINAL 4 : COPPER ALLOY
 TERMINAL 10 : BRASS
 TERMINAL 11 : BRASS
 HOUSING : HIGH TEMP. PLASTIC



RECOMMENDED PCB LAYOUT
 TOLERANCE: ± 0.05
 (TOP VIEW)



广东科斯达开关厂

PART NAME	2.5mm SMD STEREO JACK	TOLERANCE UNLESS OTHERWISE SPECIFIED:	0.0=0.2 0.00±0.1 0.000±0.05	UNIT:		DESIGN	J.X.KUANG	DATE	10-12-2007	SCALE	5:1
PART NO.						DRAWING	T.Y.LI	DATE	7-3-2017	MATERIAL	*
						CHECK	H.L.TAN	DATE	7-3-2017	DWG. NO.	TZ\TG2863-3-A/1.0
						APPROVAL		DATE		SHEET	

F

E

D

C

B

A