

F

E

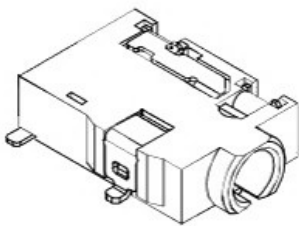
D

C

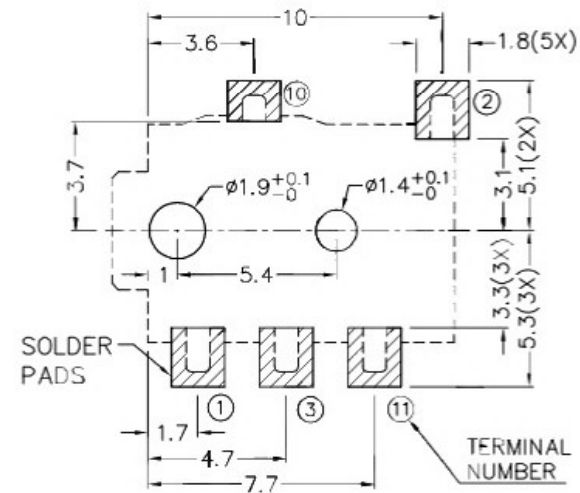
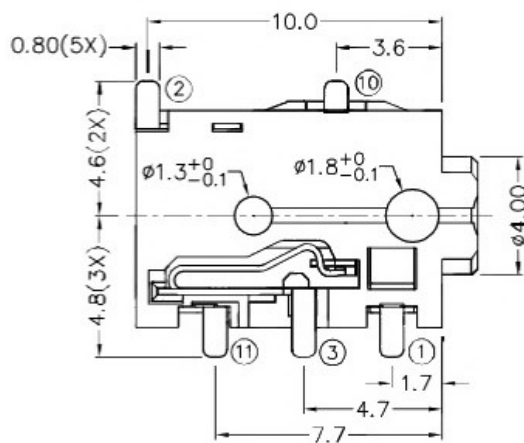
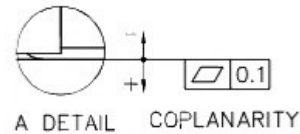
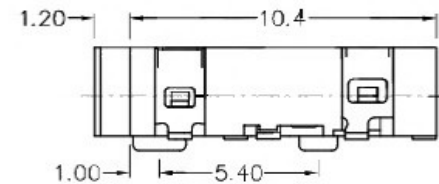
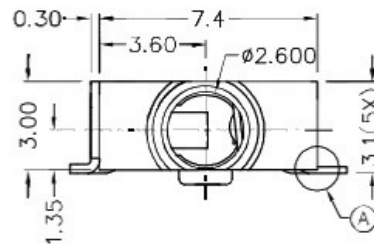
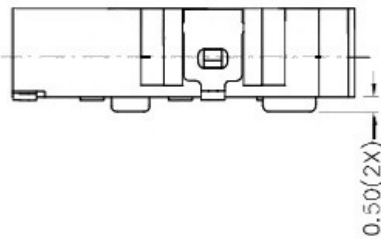
B

A

ZONE	SYMBOL	REVISION	APPROVAL	DATE



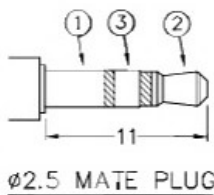
RoHS  
Compliant



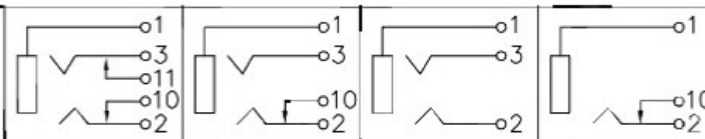
\* MATERIAL

TERMINAL 1 : COPPER ALLOY  
 TERMINAL 2 : COPPER ALLOY  
 TERMINAL 3 : COPPER ALLOY  
 TERMINAL 10 : BRASS  
 TERMINAL 11 : COPPER ALLOY  
 HOUSING : HIGH TEMP. PLASTIC

RECOMMENDED PCB LAYOUT  
 TOLERANCE: ±0.05  
 (TOP VIEW)

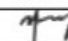


SCHEMATIC



 广东科斯达开关厂

PART NAME 2.5mm SMD STEREO JACK TOLERANCE UNLESS 0.0±0.2  
 PART NO. OTHERWISE SPECIFIED: 0.00±0.1  
 UNIT: mm

DESIGN	J.JIANG	DATE	3-5-2004	SCALE	4:1
DRAWING	G.P.YI	DATE	26-8-2016	MATERIAL	*
CHECK	T.Y.LI	DATE	26-8-2016	DWG. NO.	TZ\TG266-A/1.0
APPROVAL		DATE	26-8-2016	SHEET	

F

E

D

C

B

A