

F

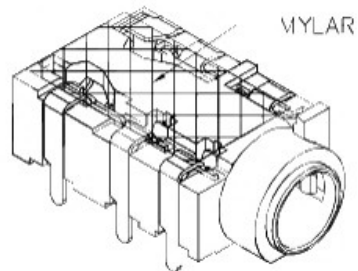
E

D

C

B

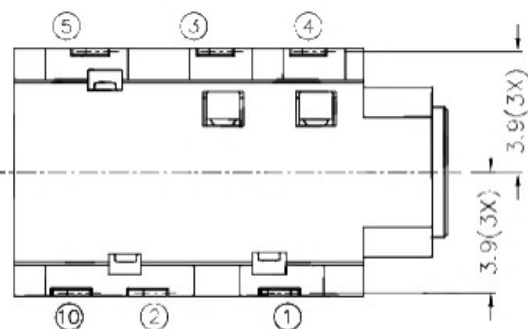
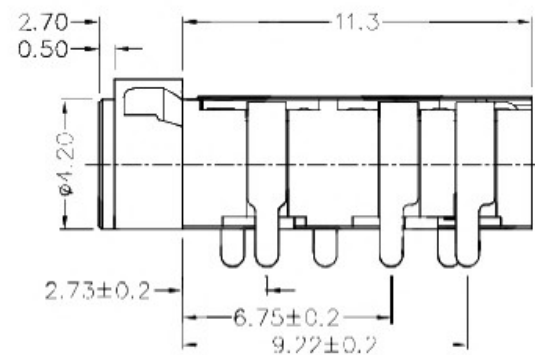
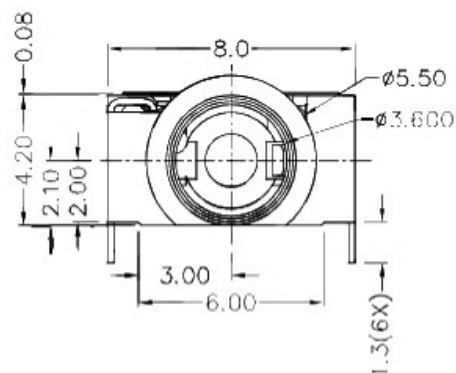
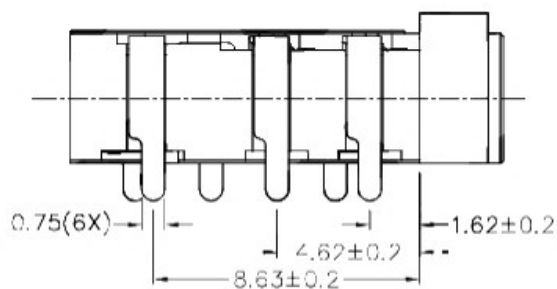
A



MYLAR

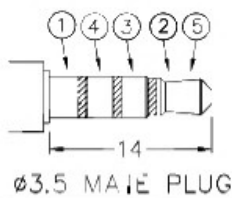
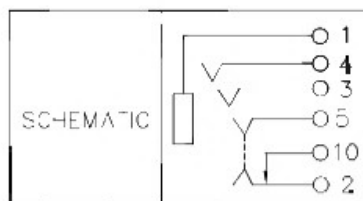
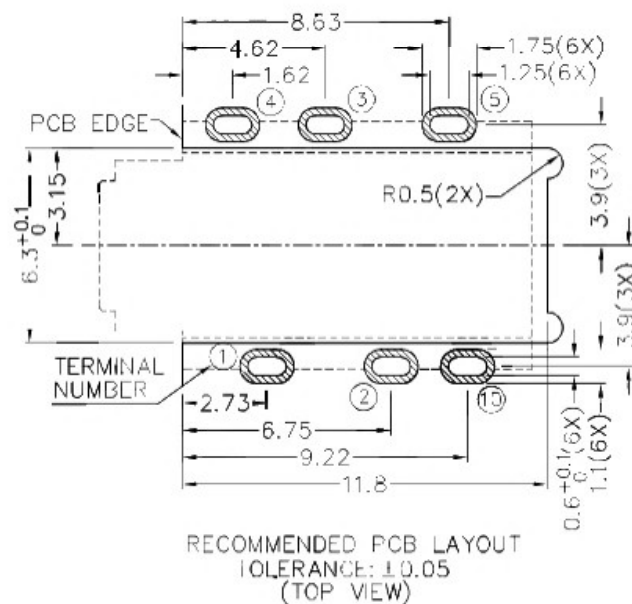
RoHS
Compliant

ZONE	SYMBOL	REVISION	APPROVAL	DATE



* MATERIAL

TERMINAL 1 : COPPER ALLOY
 TERMINAL 2 : COPPER ALLOY
 TERMINAL 3 : COPPER ALLOY
 TERMINAL 4 : COPPER ALLOY
 TERMINAL 5 : COPPER ALLOY
 TERMINAL 10: COPPER ALLOY
 MYLAR : POLYIMIDE
 HOUSING : HIGH TEMP. PLASTIC



14
ø3.5 MALE PLUG

RECOMMENDED PCB LAYOUT
TOLERANCE: ±0.05
(TOP VIEW)

广东科斯达开关厂

DESIGN	H.L.TAN	DATE	26-3-2013	SCALE	4:1
DRAWING	J.H.ZHOU	DATE	9-2-2017	MATERIAL	*
CHECK	T.Y.LI	DATE	9-2-2017	DWG. NO.	TZ\SH5693T1-A/1.0
APPROVAL		DATE		SHEET	

PART NAME 3.5mm SMD STEREO JACK

TOLERANCE UNLESS 0.0±0.2

0.00±0.1

UNIT: mm

OTHERWISE SPECIFIED: 0.000±0.05



F

E

D

C

B

A