

F

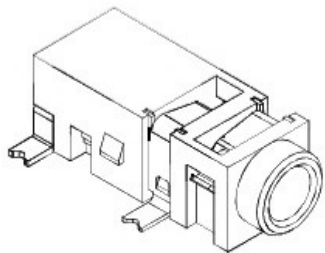
E

D

C

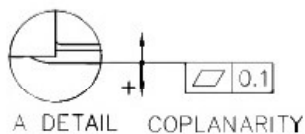
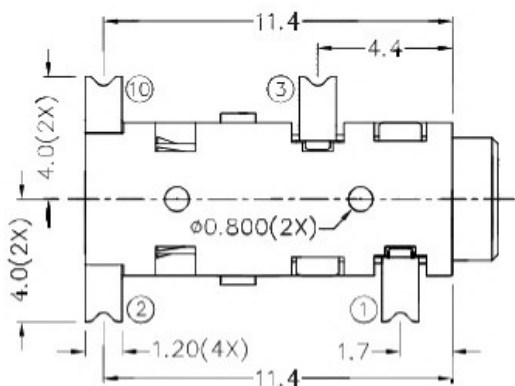
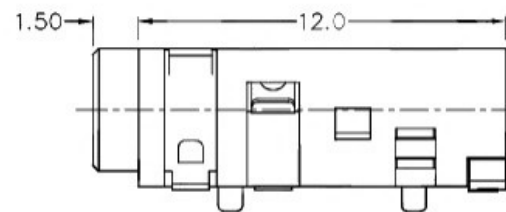
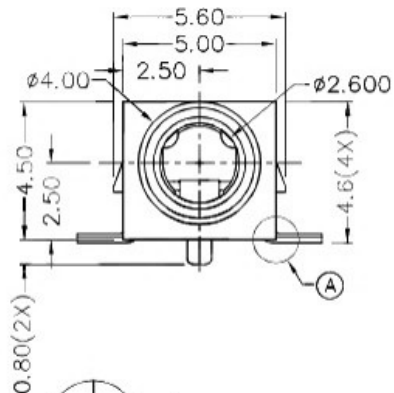
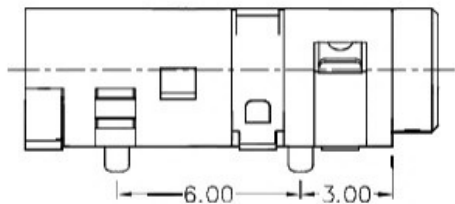
B

A



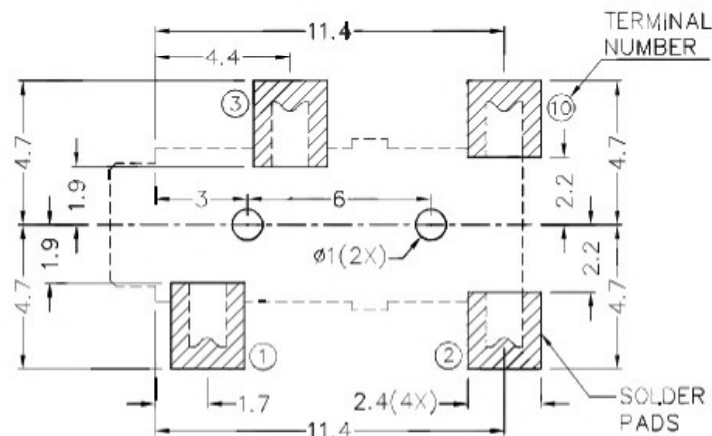
RoHS
Compliant

ZONE	SYMBOL	REVISION	APPROVAL	DATE

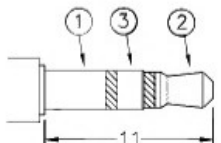


* MATERIAL

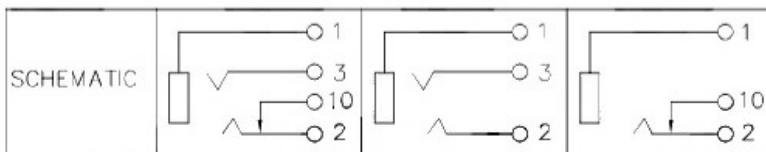
- TERMINAL 1 : COPPER ALLOY
- TERMINAL 2 : COPPER ALLOY
- TERMINAL 3 : COPPER ALLOY
- TERMINAL 10: BRASS
- HOUSING : HIGH TEMP. PLASTIC



RECOMMENDED PCB LAYOUT
TOLERANCE: ±0.05
(TOP VIEW)



∅2.5 MATE PLUG



 广东科斯达开关厂

PART NAME 2.5mm SMD STEREO JACK
PART NO.

TOLERANCE UNLESS 0.0±0.2
OTHERWISE SPECIFIED: 0.00±0.1
0.00±0.05

UNIT: mm

DESIGN	J.JIANG	DATE	3-5-2004	SCALE	4:1
DRAWING	T.Y.LI	DATE	27-2-2017	MATERIAL	*
CHECK	H.L.TAN	DATE	27-2-2017	DWG. NO.	TZ\TG257-A/1.0
APPROVAL		DATE		SHEET	

F

E

D

C

B

A