

F

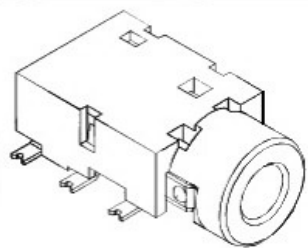
E

D

C

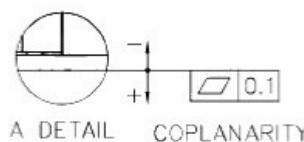
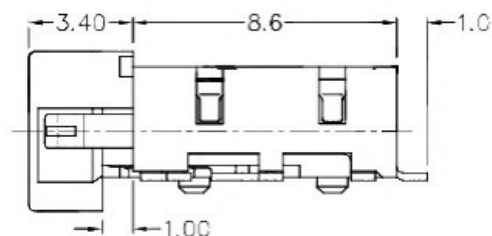
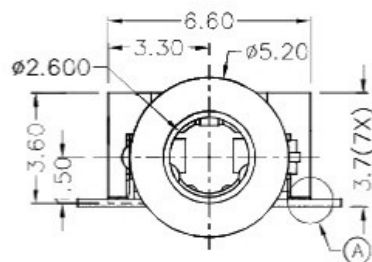
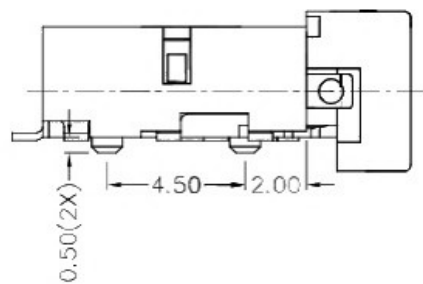
B

A

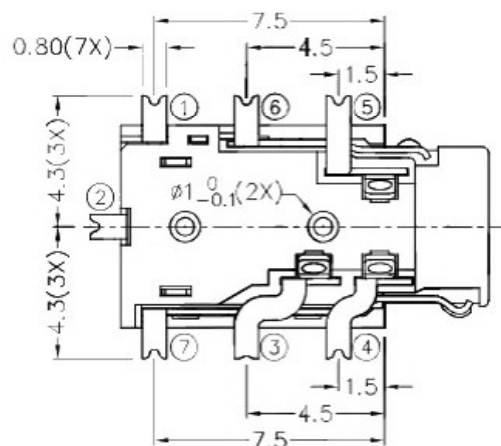


RoHS
Compliant

ZONE	SYMBOL	REVISION	APPROVAL	DATE

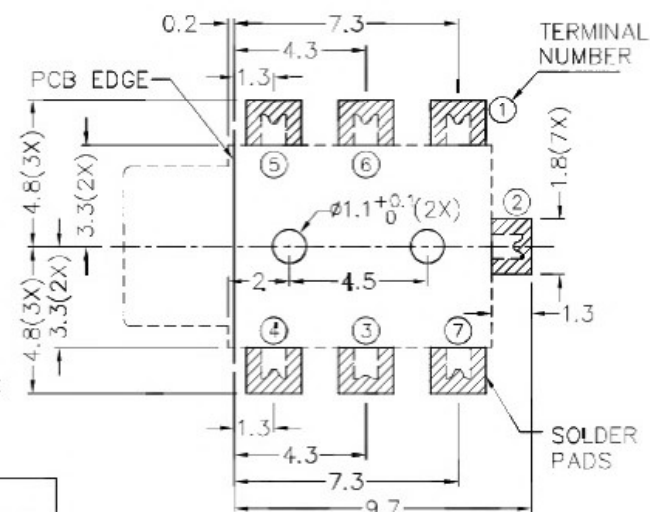


A DETAIL COPLANARITY

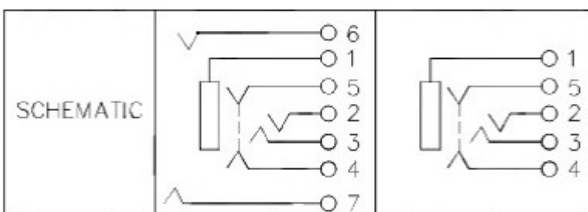
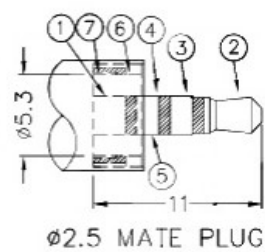



* MATERIAL

TERMINAL 1 : COPPER ALLOY
 TERMINAL 2 : COPPER ALLOY
 TERMINAL 3 : COPPER ALLOY
 TERMINAL 4 : COPPER ALLOY
 TERMINAL 5 : COPPER ALLOY
 TERMINAL 6 : COPPER ALLOY
 TERMINAL 7 : COPPER ALLOY
 HOUSING : HIGH TEMP. PLASTIC



RECOMMENDED PCB LAYOUT
 TOLERANCE: ±0.05
 (TOP VIEW)



 广东科斯达开关厂

PART NAME 2.5mm SMD STEREO JACK
 PART NO.

TOLERANCE UNLESS 0.0±0.2
 OTHERWISE SPECIFIED: 0.00±0.1
 0.000±0.05

UNIT: mm



DESIGN	G.P.YI	DATE	21-1-2008	SCALE	4:1
DRAWING	T.Y.LI	DATE	29-3-2017	MATERIAL	*
CHECK	H.L.TAN	DATE	29-3-2017	DWG. NO.	TZ\TG406D-A/1.0
APPROVAL		DATE		SHEET	

F

E

D

C

B

A