

F

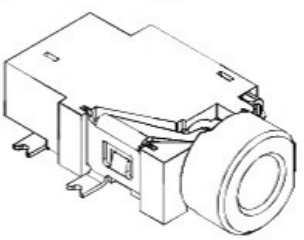
E

D

C

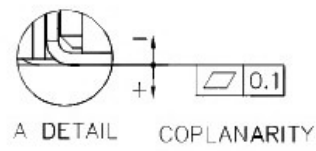
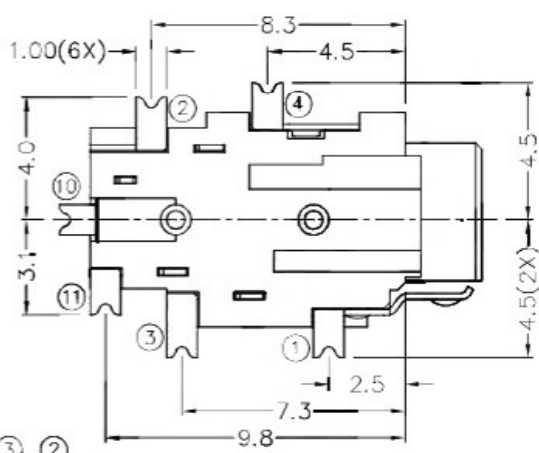
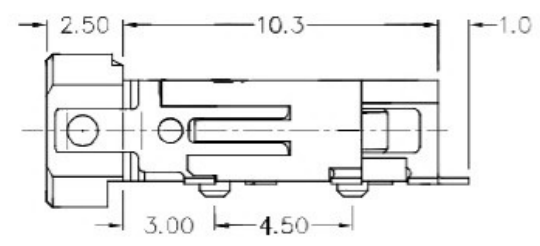
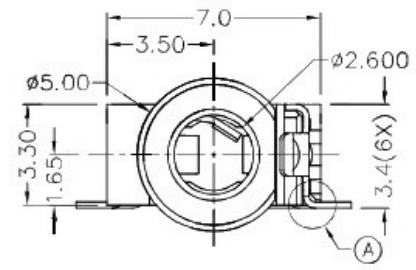
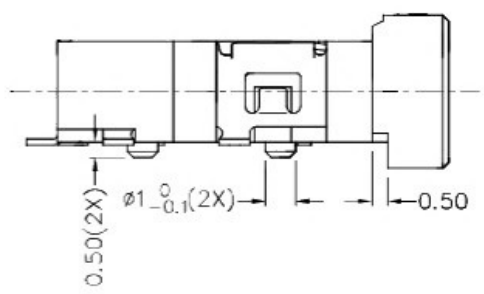
B

A

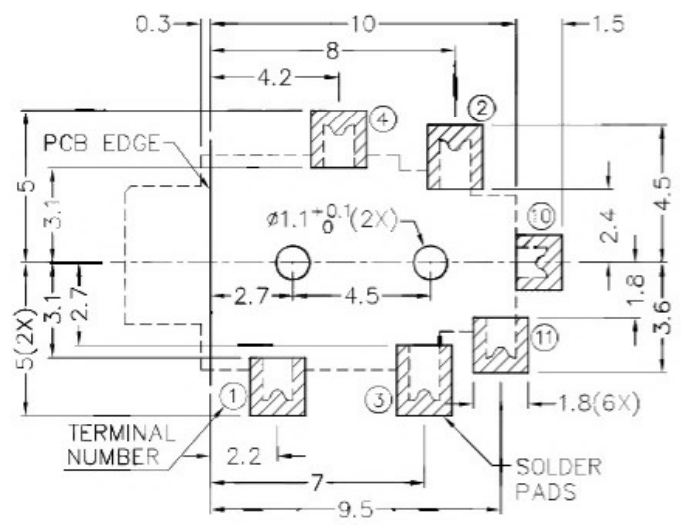


RoHS
Compliant

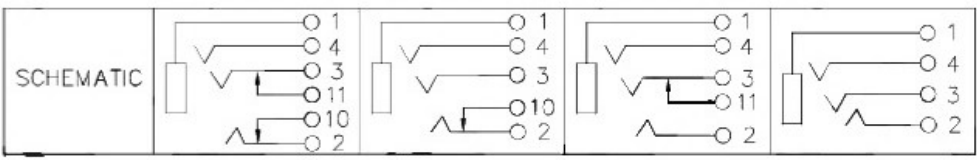
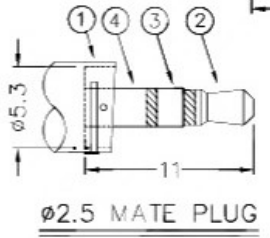
ZONE	SYMBOL	REVISION	APPROVAL	DATE



* MATERIAL
 TERMINAL 1 : COPPER ALLOY
 TERMINAL 2 : COPPER ALLOY
 TERMINAL 3 : COPPER ALLOY
 TERMINAL 4 : COPPER ALLOY
 TERMINAL 10: COPPER ALLOY
 TERMINAL 11: COPPER ALLOY
 HOUSING : HIGH TEMP. PLASTIC



RECOMMENDED PCB LAYOUT
 TOLERANCE: ± 0.05
 (TOP VIEW)



广东科斯达开关厂

DESIGN	G.P.YI	DATE	8-1-2007	SCALE	4:1
DRAWING	T.Y.LI	DATE	10-3-2017	MATERIAL	*
CHECK	H.L.TAN	DATE	10-3-2017	DWG. NO.	TZ\TG299D-A/1.0
APPROVAL		DATE		SHEET	

PART NAME	2.5mm SMD STEREO JACK	TOLERANCE UNLESS	0.0 \pm 0.2	UNIT:	mm
PART NO.		OTHERWISE SPECIFIED:	0.00 \pm 0.1 0.000 \pm 0.05		

F

E

D

C

B

A