

F

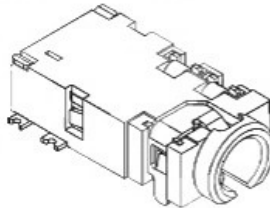
E

D

C

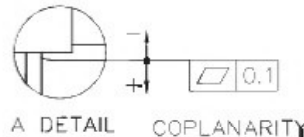
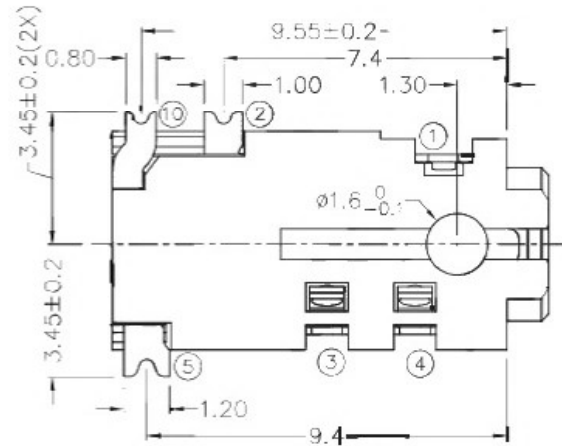
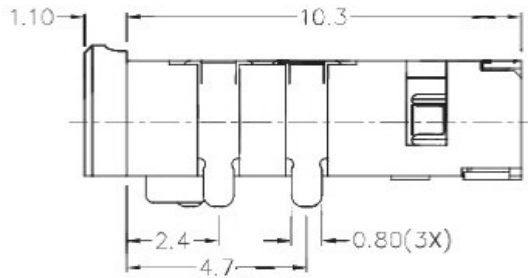
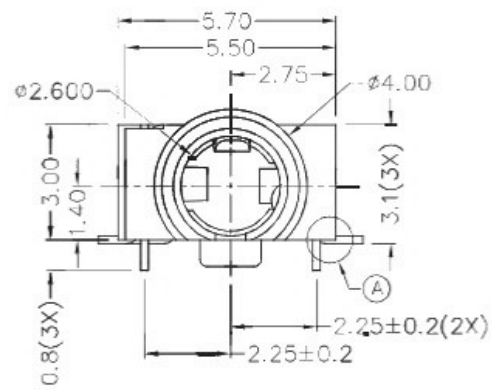
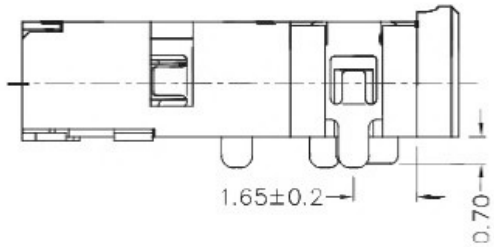
B

A



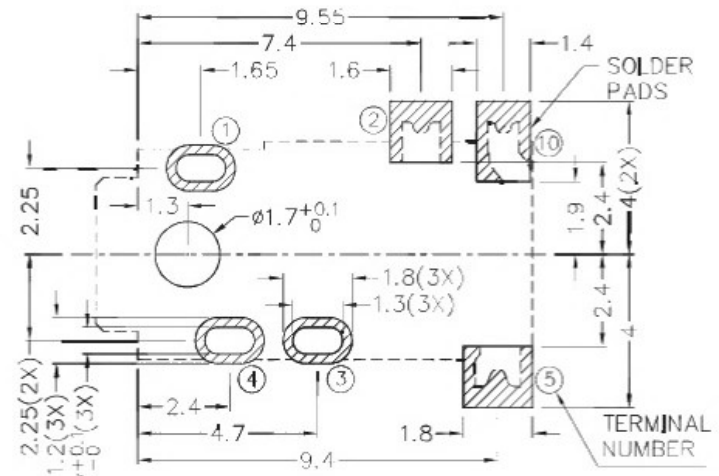
RoHS
Compliant

ZONE	SYMBOL	REVISION	APPROVAL	DATE
		UPDATE THE DIMENSION	J.X.KUANG	18-12-2018

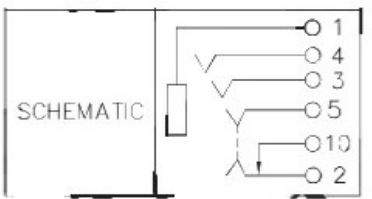
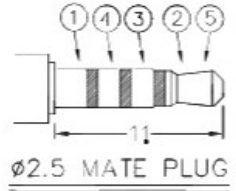


* MATERIAL

TERMINAL 1 : COPPER ALLOY
 TERMINAL 2 : COPPER ALLOY
 TERMINAL 3 : COPPER ALLOY
 TERMINAL 4 : COPPER ALLOY
 TERMINAL 5 : COPPER ALLOY
 TERMINAL 10: COPPER ALLOY
 HOJSING : HIGH TEMP. PLASTIC



RECOMMENDED PCB LAYOUT
TOLERANCE: ±0.05
(TOP VIEW)



广东科斯达开关厂

PART NAME	2.5mm SMD STEREO JACK	TOLERANCE UNLESS	0.0±0.2	UNIT:	
PART NO.		OTHERWISE SPECIFIED:	0.00±0.1 0.000±0.05	mm	

DESIGN	G.P.YI	DATE	25-4-2008	SCALE	5:1
DRAWING	T.Y.LI	DATE	18-12-2018	MATERIAL	*
CHECK	H.L.TAN	DATE	18-12-2018	DWG. NO.	TZ\TG407D-A/1.1
APPROVAL		DATE		SHEET	

F

E

D

C

B

A