

F

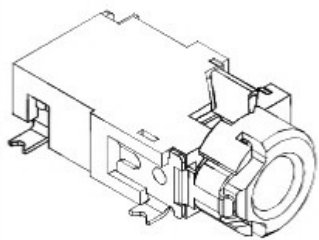
E

D

C

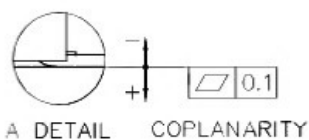
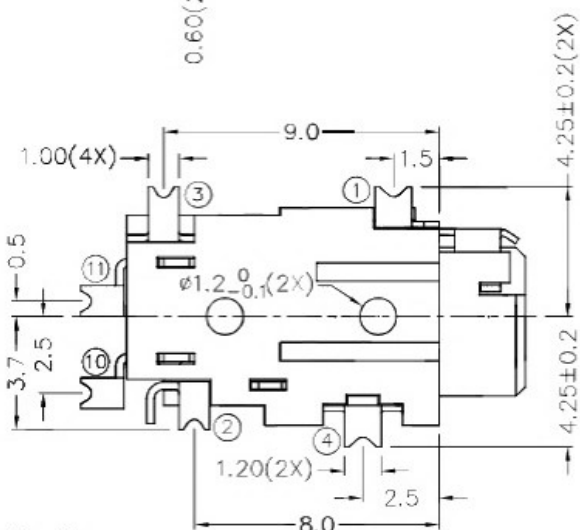
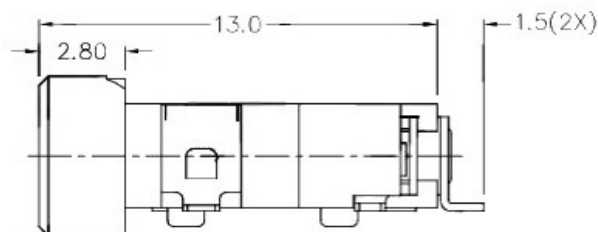
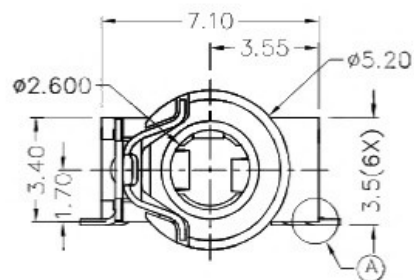
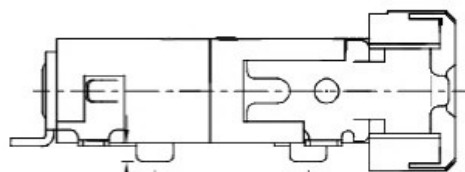
B

A



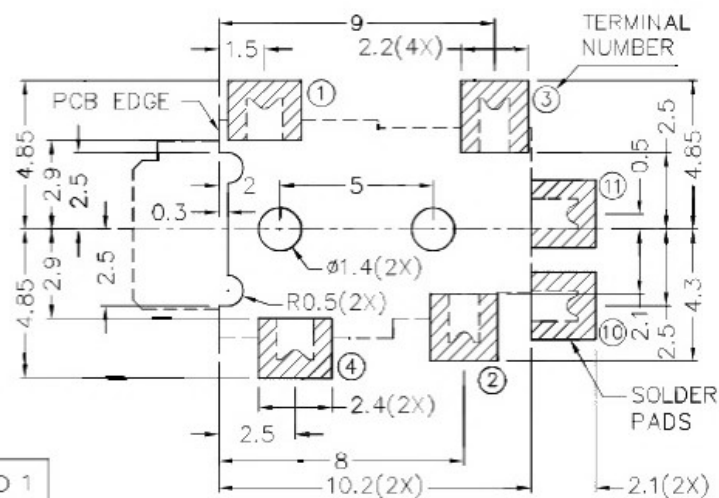
RoHS
Compliant

ZONE	SYMBOL	REVISION	APPROVAL	DATE

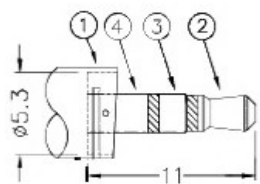


* MATERIAL

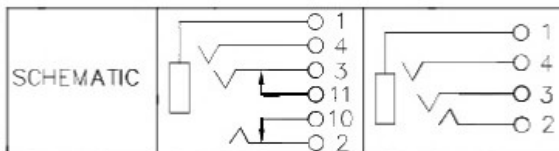
TERMINAL 1 : COPPER ALLOY
 TERMINAL 2 : COPPER ALLOY
 TERMINAL 3 : COPPER ALLOY
 TERMINAL 4 : COPPER ALLOY
 TERMINAL 10 : BRASS
 TERMINAL 11 : BRASS
 HOUSING : HIGH TEMP. PLASTIC




RECOMMENDED PCB LAYOUT
 TOLERANCE: ± 0.05
 (TOP VIEW)



$\phi 2.5$ MATE PLUG



 广东科斯达开关厂

PART NAME 2.5mm SMD STEREO JACK
 PART NO.

TOLERANCE UNLESS 0.0 ± 0.2
 OTHERWISE SPECIFIED: 0.00 ± 0.1
 0.000 ± 0.05

UNIT: mm



DESIGN	T.Y.LI	DATE	2-10-2003	SCALE	4:1
DRAWING	J.CH.OU	DATE	6-3-2017	MATERIAL	*
CHECK	H.L.TAN	DATE	6-3-2017	DWG. NO.	TZ\TG281D-A/1.0
APPROVAL		DATE		SHEET	

F

E

D

C

B

A