

F

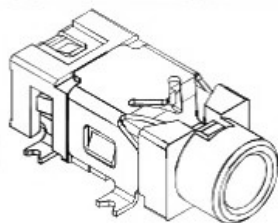
E

D

C

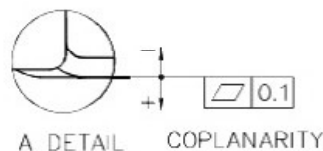
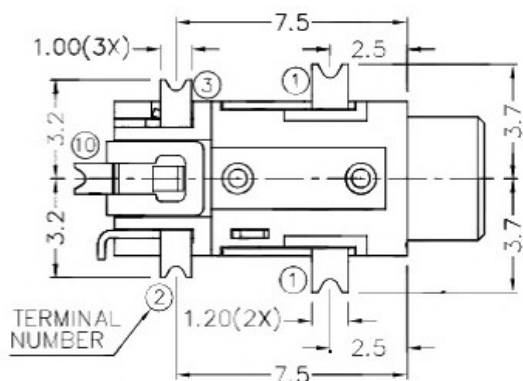
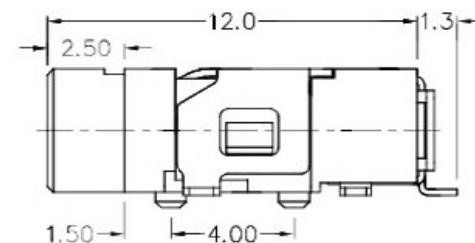
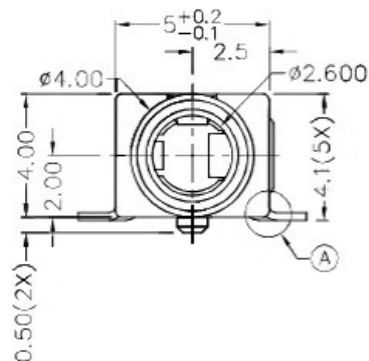
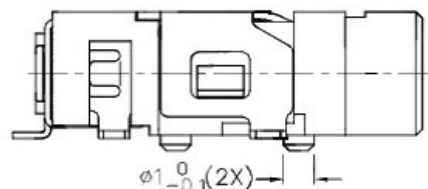
B

A



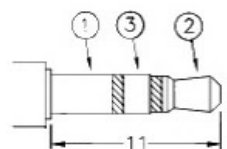
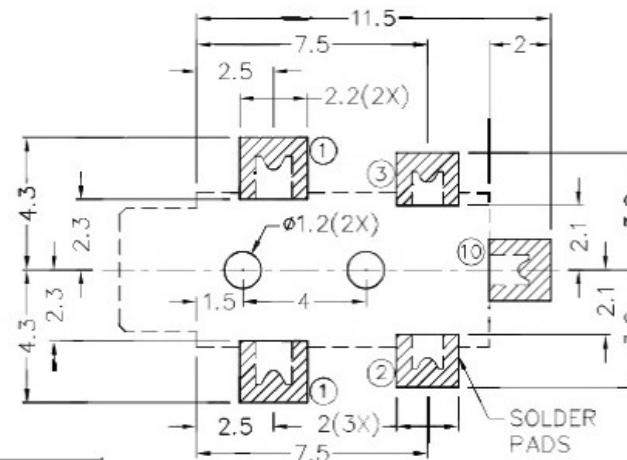
RoHS
Compliant

ZONE	SYMBOL	REVISION	APPROVAL	DATE

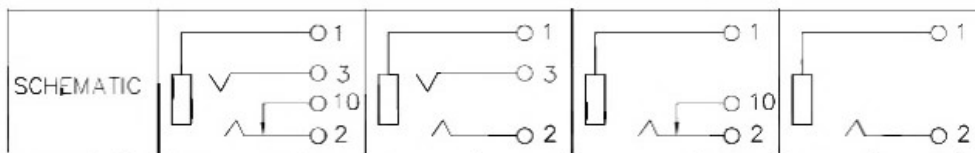


* MATERIAL

TERMINAL 1 : COPPER ALLOY
 TERMINAL 2 : COPPER ALLOY
 TERMINAL 3 : COPPER ALLOY
 TERMINAL 10: COPPER ALLOY
 HOUSING : HIGH TEMP. PLASTIC



Ø2.5 MATE PLUG



RECOMMENDED PCB LAYOUT
 TOLERANCE: ±0.05
 (TOP VIEW)

广东科斯达开关厂

PART NAME	2.5mm SMD STEREO JACK	TOLERANCE UNLESS	0.0±0.2	UNIT:	mm	DESIGN	J.X.KUANG	DATE	2-10-2003	SCALE	4:1
PART NO.		OTHERWISE SPECIFIED:	0.00±0.1 0.000±0.05				DRAWING	T.Y.LI	DATE	6-3-2017	MATERIAL
						CHECK	H.L.TAN	DATE	6-3-2017	DWG. NO.	TZ\TG280D-A/1.0
						APPROVAL		DATE		SHEET	

F

E

D

C

B

A