

F

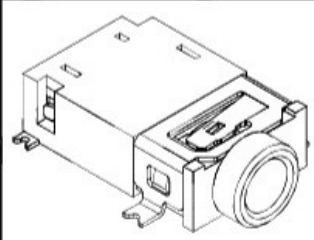
E

D

C

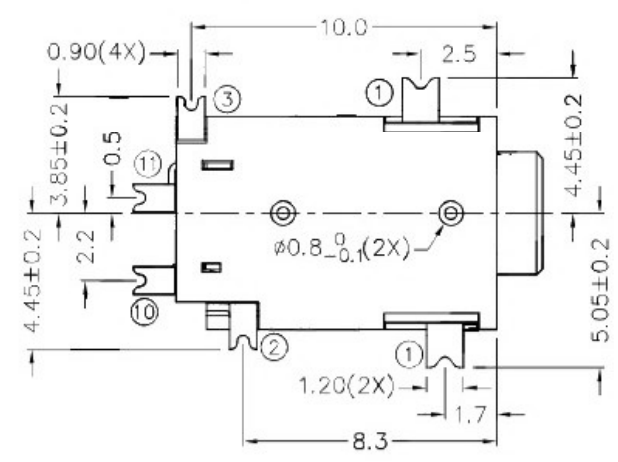
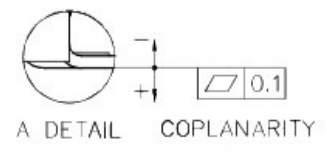
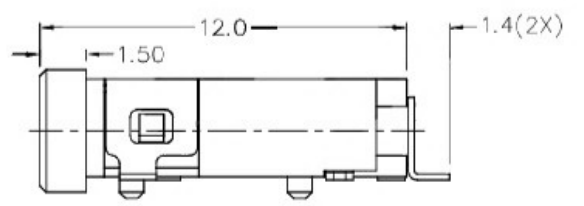
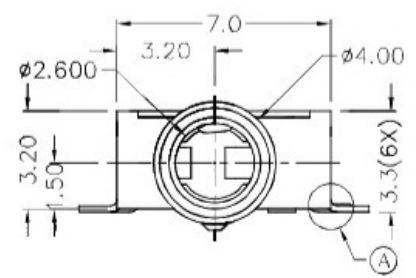
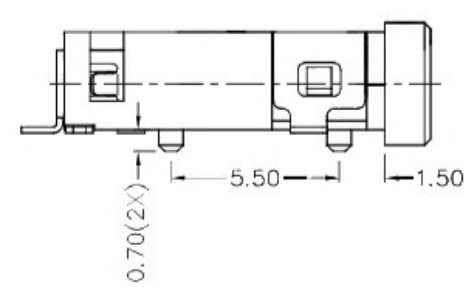
B

A

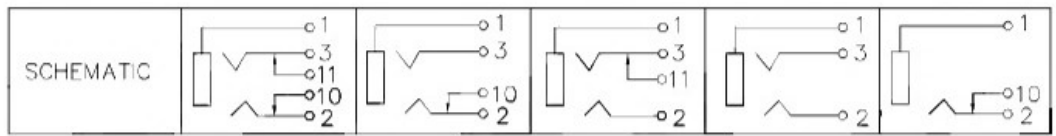
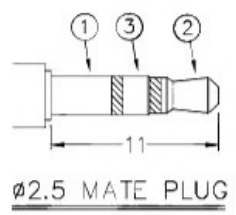
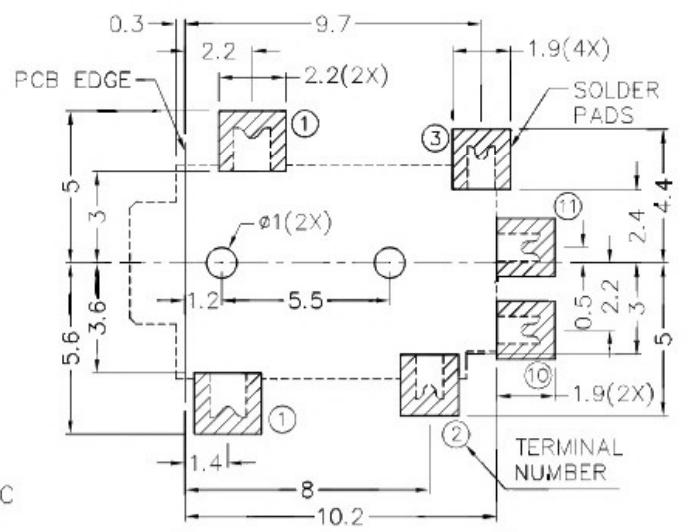


RoHS
Compliant

ZONE	SYMBOL	REVISION	APPROVAL	DATE



* MATERIAL
 TERMINAL 1 : COPPER ALLOY
 TERMINAL 2 : COPPER ALLOY
 TERMINAL 3 : COPPER ALLOY
 TERMINAL 10 : BRASS
 TERMINAL 11 : BRASS
 HOUSING : HIGH TEMP. PLASTIC



RECOMMENDED PCB LAYOUT
TOLERANCE: ±0.05
(TOP VIEW)

广东科斯达开关厂

PART NAME		2.5mm SMD STEREO JACK		TOLERANCE UNLESS	0.0±0.2	UNIT:		DESIGN	T.Y.LI	DATE	21-8-2003	SCALE	4:1
PART NO.				OTHERWISE SPECIFIED:	0.00±0.1 0.000±0.05	mm		CHECK	H.L.TAN	DATE	6-3-2017	MATERIAL	*
							APPROVAL			DATE		DWG. NO.	TZ\TG283D-A/i.0
												SHEET	

F

E

D

C

B

A