

F

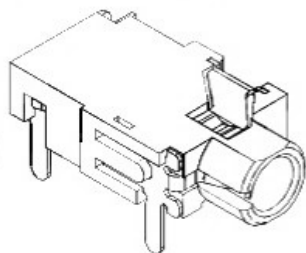
E

D

C

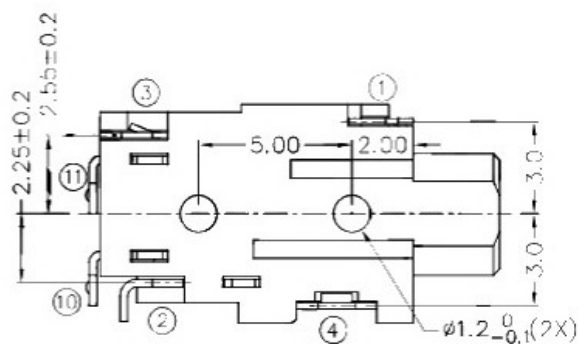
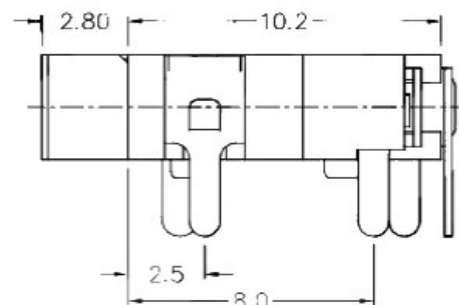
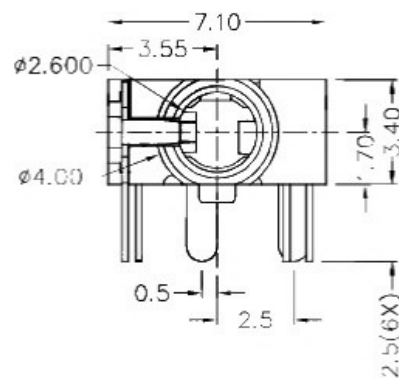
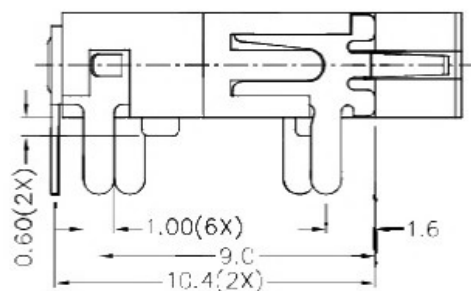
B

A



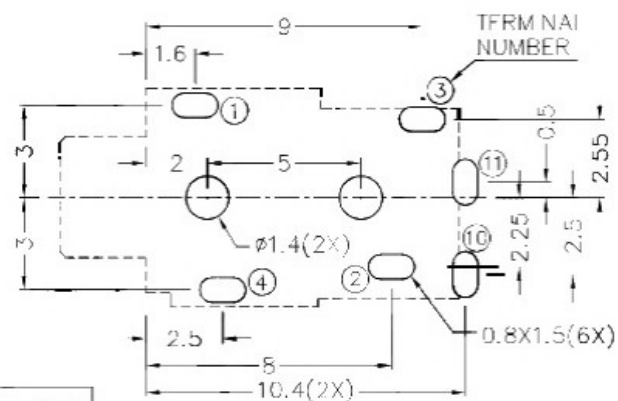
RoHS  
Compliant

ZONE	SYMBOL	REVISION	APPROVAL	DATE

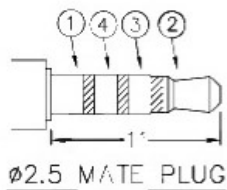


\* MATERIAL

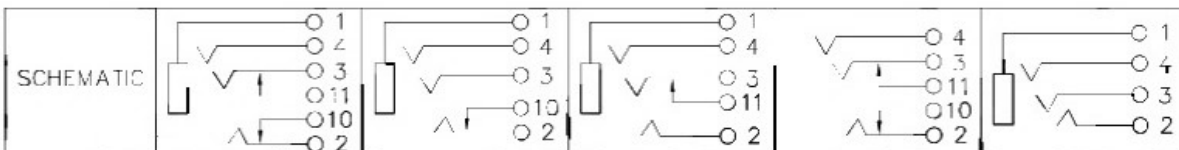
TERMINAL 1 : COPPER ALLOY  
 TERMINAL 2 : COPPER ALLOY  
 TERMINAL 3 : COPPER ALLOY  
 TERMINAL 4 : COPPER ALLOY  
 TERMINAL 10: BRASS  
 TERMINAL 11: BRASS  
 HOUSING : THERMOPLASTIC



RECOMMENDED PCB LAYOUT  
 TOLERANCE: ±0.05  
 (TOP VIEW)



Ø2.5 MATE PLUG



广东科斯达开关厂

DESIGN	T.Y.H	DATE	9-1-2003	SCALE	5:1
DRAWING	Y.J.GJO	DATE	6-3-2017	MATERIAL	*
CHECK	H.L.TAN	DATE	6-3-2017	DWG. NO.	TZ\TG279-B/1.0
APPROVAL		DATE		SHEET	

PART NAME	2.5mm STEREO JACK	TOLERANCE UNLESS	0.0=0.2	UNIT:	mm
PART NO.		OTHERWISE SPECIFIED:	0.00±0.1		

F

E

D

C

B

A