

F

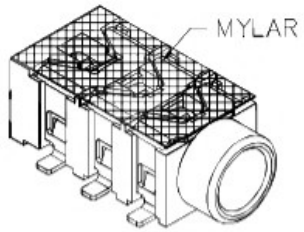
E

D

C

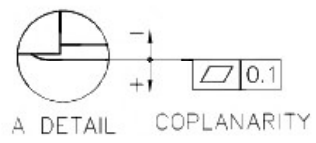
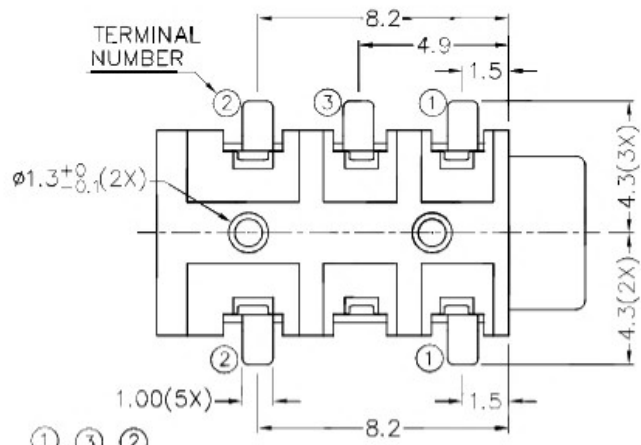
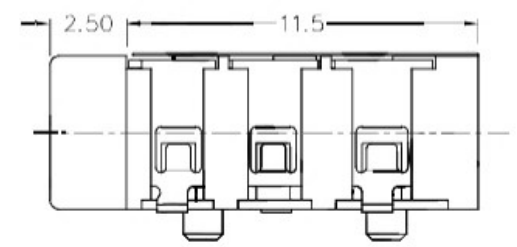
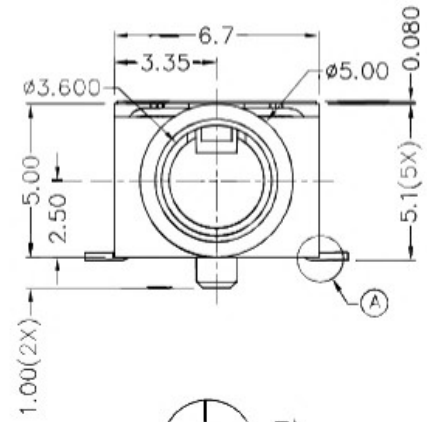
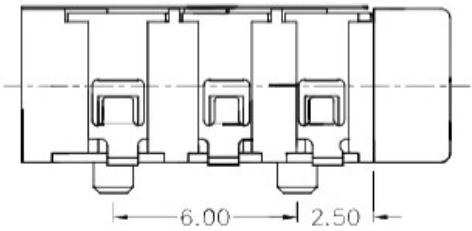
B

A

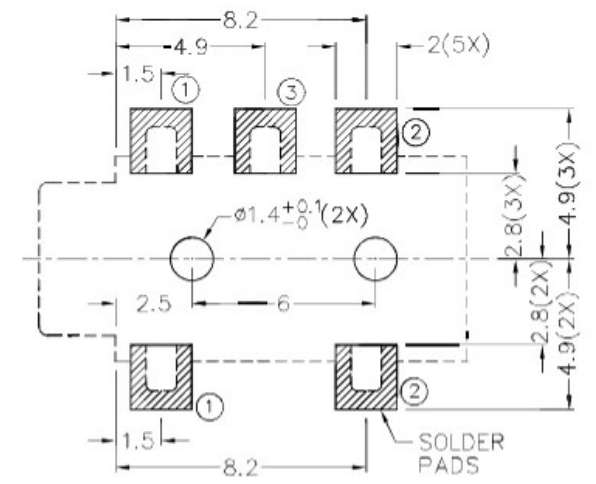
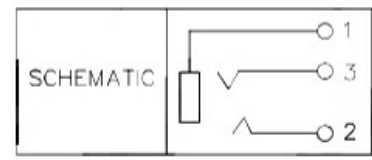
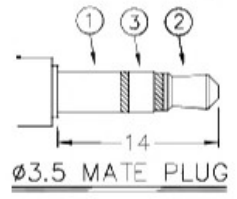


RoHS
Compliant

ZONE	SYMBOL	REVISION	APPROVAL	DATE



※ MATERIAL
 TERMINAL 1 : COPPER ALLOY
 TERMINAL 2 : COPPER ALLOY
 TERMINAL 3 : COPPER ALLOY
 HOUSING : HIGH TEMP. PLASTIC
 MYLAR : POLYIMIDE



RECOMMENDED PCB LAYOUT
 TOLERANCE: ±0.05
 (TOP VIEW)

广东科斯达开关厂

PART NAME	3.5mm SMD STEREO JACK	TOLERANCE UNLESS 0.0±0.2 0.00±0.1 OTHERWISE SPECIFIED: 0.000±0.05	UNIT: mm	DESIGN	Y.J.GUO	DATE	31-5-2017	SCALE	4:1
				DRAWING	H.L.TAN	DATE	31-5-2017	MATERIAL	*
PART NO.				CHECK	T.Y.LI	DATE	31-5-2017	DWG. NO.	TZ\SH354DT1-A/1.0
				APPROVAL		DATE		SHEET	

F

E

D

C

B

A