

F

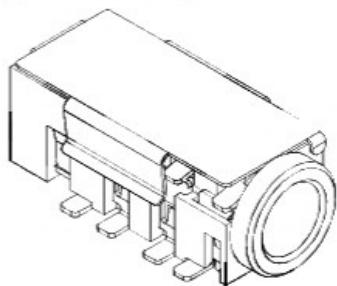
E

D

C

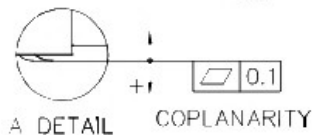
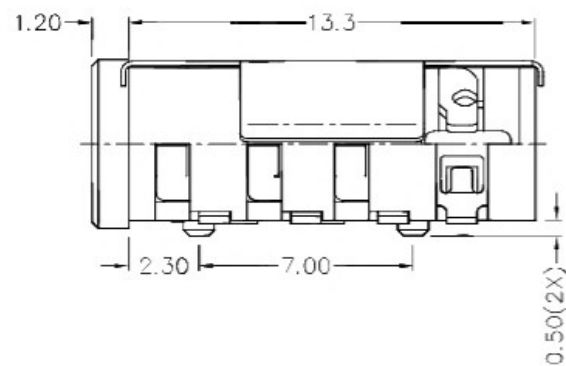
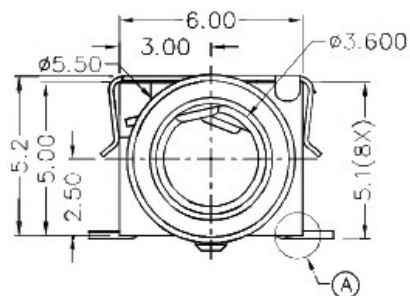
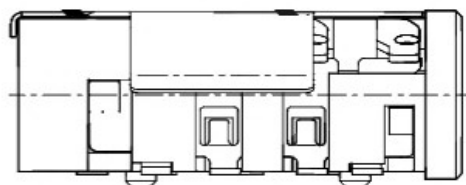
B

A



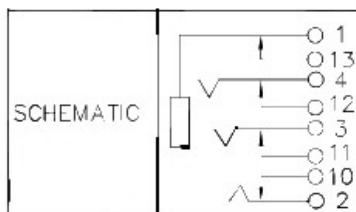
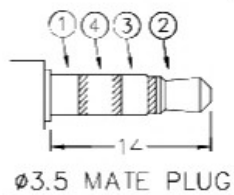
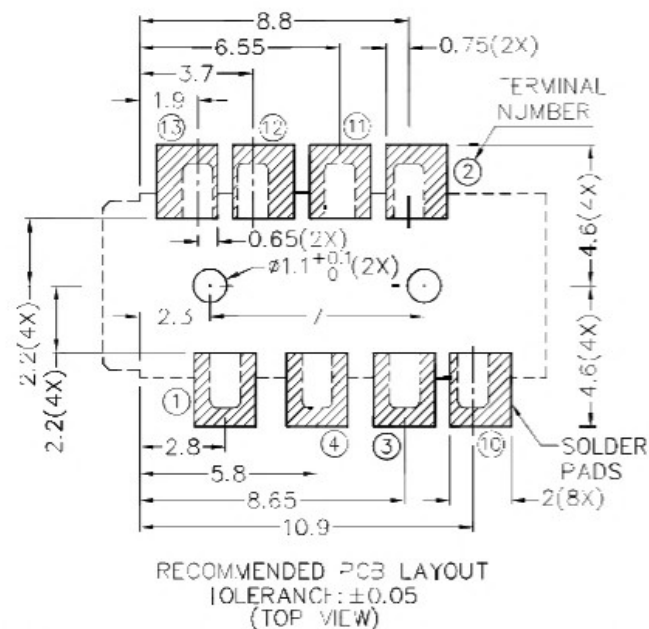
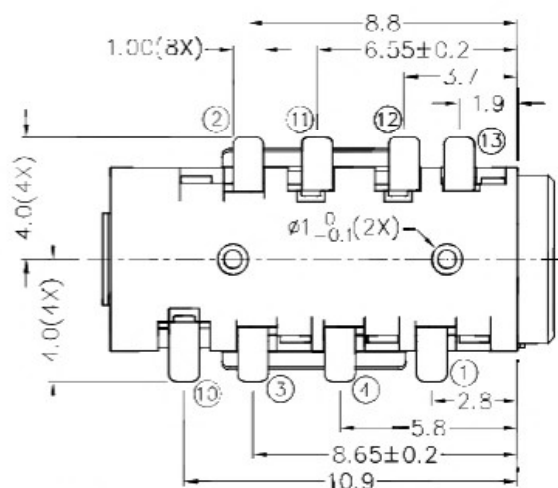
RoHS
Compliant

ZCNE	SYMBOL	REVISION	APPROVAL	DATE



* MATERIAL

TERMINAL 1 : COPPER ALLOY
 TERMINAL 2 : COPPER ALLOY
 TERMINAL 3 : COPPER ALLOY
 TERMINAL 4 : COPPER ALLOY
 TERMINAL 10 : COPPER ALLOY
 TERMINAL 11 : COPPER ALLOY
 TERMINAL 12 : COPPER ALLOY
 TERMINAL 13 : COPPER ALLOY
 SHIELD : STAINLESS STEEL
 HOUSING : HIGH TFP. PLASTIC



广东科斯达开关厂

DESIGN	T.Y.LI	DATE	4-3-2009	SCALE	4:1
DRAWING	J.H.ZHOU	DATE	19-10-2016	MATERIAL	*
CHECK	H.L.TAN	DATE	19-10-2016	DWG. NO.	TZ\SF-510DS1-A/1.0
APPROVAL		DATE		SHEET	

PART NAME 3.5mm SMD STEREO JACK W/HANDING SHIELD
 PART NO.

TOLERANCE UNLESS OTHERWISE SPECIFIED: 0.0±0.2
 0.00±0.1
 0.000±0.05
 UNIT: mm



F

E

D

C

B

A