

F

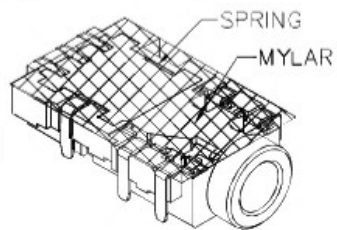
E

D

C

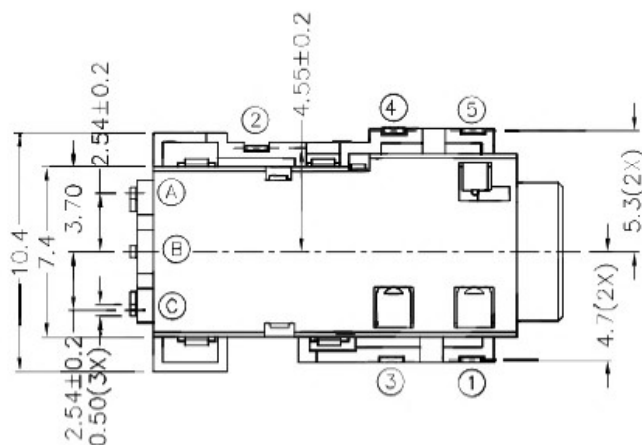
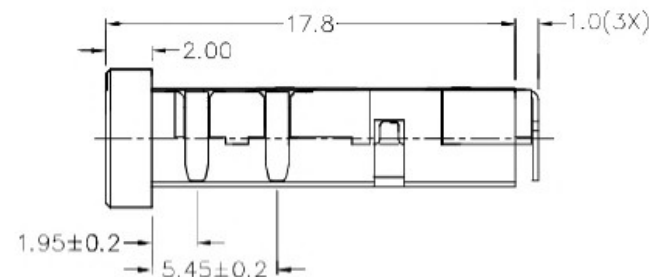
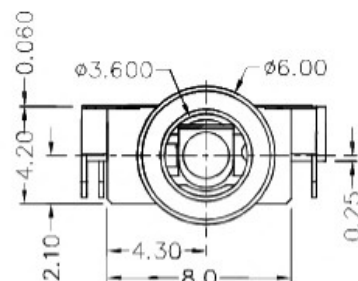
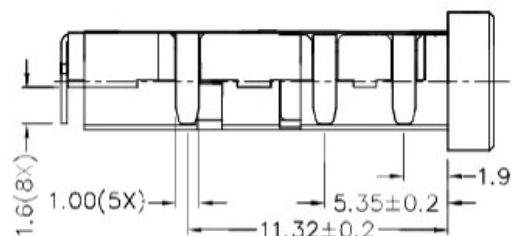
B

A



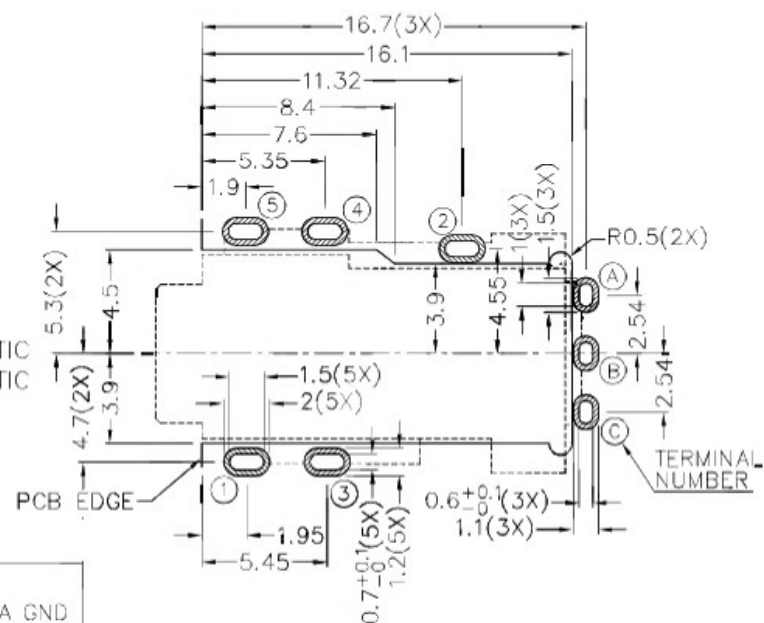
RoHS
Compliant

ZONE	SYMBOL	REVISION	APPROVAL	DATE

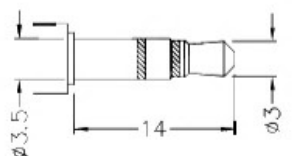


* MATERIAL

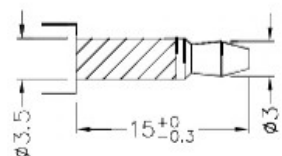
TERMINAL 1 : COPPER ALLOY
 TERMINAL 2 : COPPER ALLOY
 TERMINAL 3 : COPPER ALLOY
 TERMINAL 4 : COPPER ALLOY
 TERMINAL 5 : COPPER ALLOY
 SPRING : STAINLESS STEEL
 HOUSING : HIGH TEMP. PLASTIC
 COVER : HIGH TEMP. PLASTIC
 MYLAR : POLYIMIDE
 DRIVE IC :



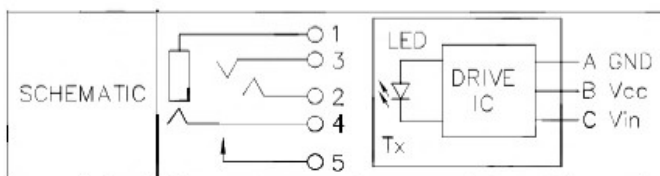
RECOMMENDED PCB LAYOUT
 TOLERANCE: ±0.05
 (TOP VIEW)



MATING STEREO PLUG



MATING OPTICAL FIBER PLUG



广东科斯达开关厂

PART NAME 3.5mm SMD STEREO JACK/OPTO
 PART NO.

TOLERANCE UNLESS 0.0±0.2
 OTHERWISE SPECIFIED: 0.00±0.1
 0.000±0.05

UNIT: mm



DESIGN	H.L.TAN	DATE	9-10-2009	SCALE	3:1
DRAWING	Y.J.GOU	DATE	14-3-2017	MATERIAL	*
CHECK	T.Y.LI	DATE	14-3-2017	DWG. NO.	TZ\0J003D111-A/1.0
APPROVAL		DATE		SHEET	

F

E

D

C

B

A