

F

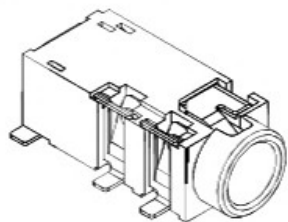
E

D

C

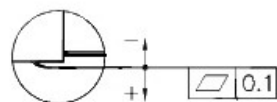
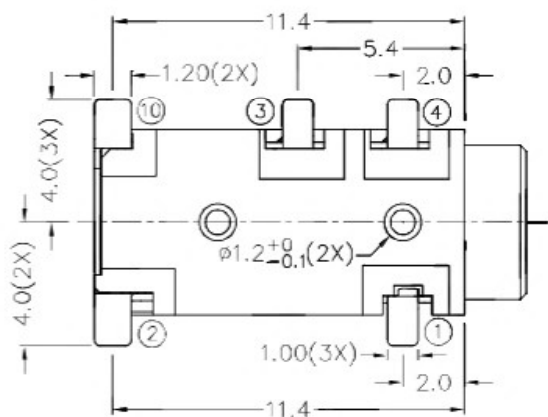
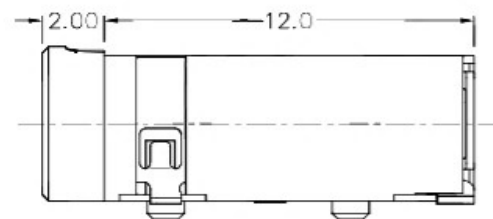
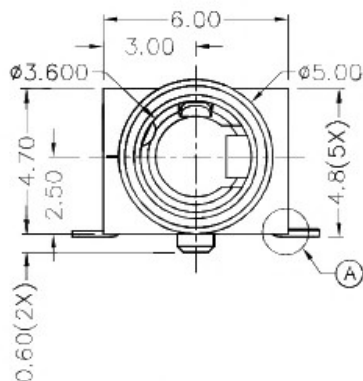
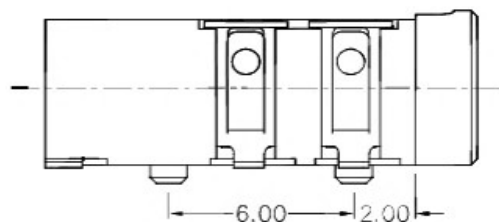
B

A



RoHS
Compliant

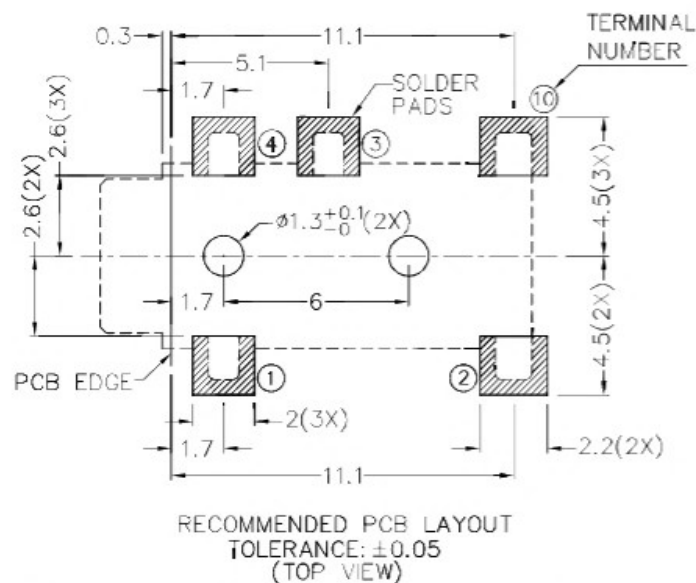
ZONE	SYMBOL	REVISION	APPROVAL	DATE



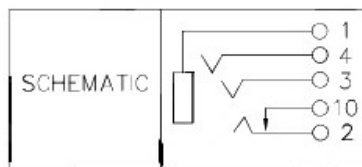
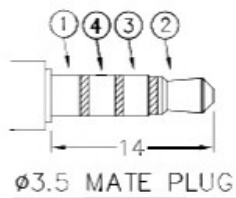
A DETAIL COPLANARITY

*** MATERIAL**

TERMINAL 1 : COPPER ALLOY
 TERMINAL 2 : COPPER ALLOY
 TERMINAL 3 : COPPER ALLOY
 TERMINAL 4 : COPPER ALLOY
 TERMINAL 10 : COPPER ALLOY
 HOUSING : HIGH TEMP. PLASTIC



RECOMMENDED PCB LAYOUT
 TOLERANCE: ± 0.05
 (TOP VIEW)



广东科斯达开关厂

PART NAME 3.5mm SMD STEREO JACK
 PART NO.

TOLERANCE UNLESS 0.0 ± 0.2
 OTHERWISE SPECIFIED: 0.00 ± 0.1
 0.000 ± 0.05

UNIT: mm

DESIGN	H.L.TAN	DATE	15-6-2018	SCALE	4:1
DRAWING	H.Q.ZHOU	DATE	15-6-2018	MATERIAL	*
CHECK	T.Y.LI	DATE	15-6-2018	DWG. NO.	TZ\SH606D-A/1.0
APPROVAL		DATE		SHEET	

F

E

D

C

B

A