

F

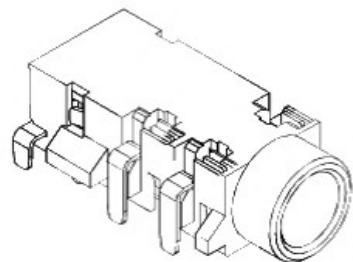
E

D

C

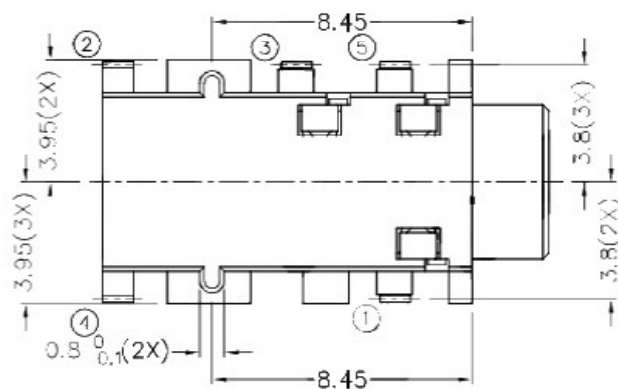
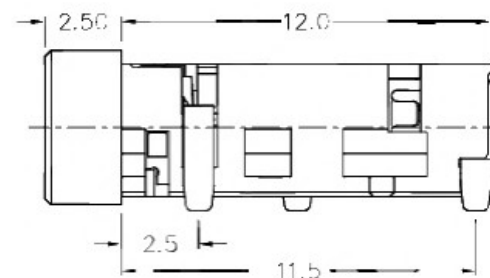
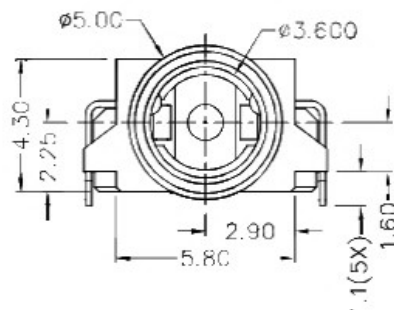
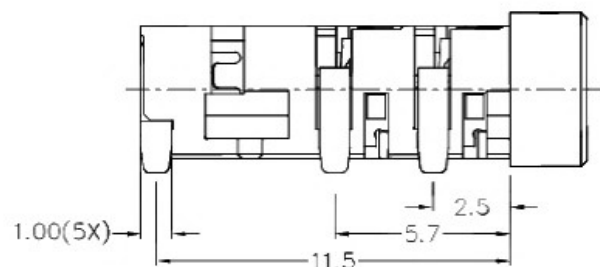
B

A



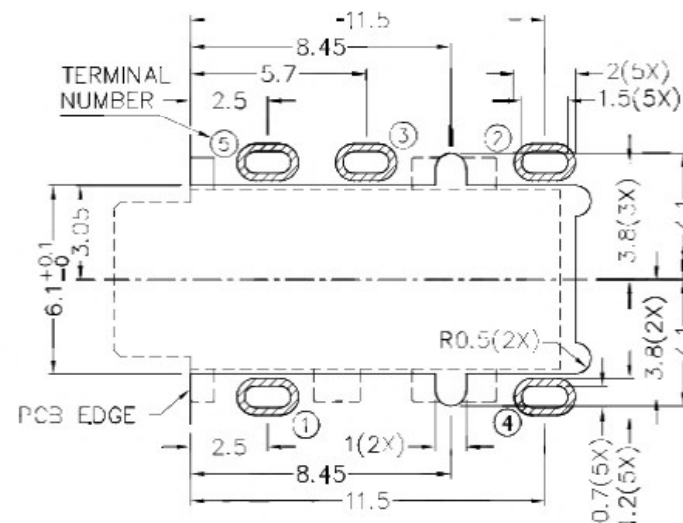
RoHS  
Compliant

ZCNF	SYMBOL	REVISION	APPROVAL	DATE

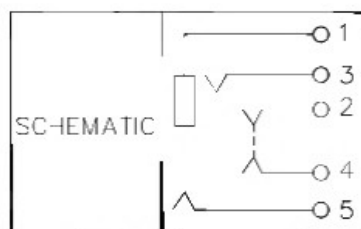
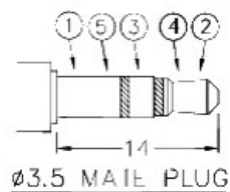


\* MATERIAL

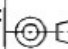
TERMINAL 1 : COPPER ALLOY  
 TERMINAL 2 : COPPER ALLOY  
 TERMINAL 3 : COPPER ALLOY  
 TERMINAL 4 : COPPER ALLOY  
 TERMINAL 5 : COPPER ALLOY  
 HOUSING : HIGH TEMP. PLASTIC



RECOMMENDED PCB LAYOUT  
 TOLERANCE:  $\pm 0.05$   
 (TOP VIEW)



 广东科斯达开关厂

PART NAME	3.5mm SMD STEREO JACK	TOLERANCE UNLESS	0.0=0.2	UNIT:		DESIGN	CH.XIONG	DATE	26-9-2012	SCALE	4:1
PART NO.		OTHERWISE SPECIFIED:	0.00±0.1	mm		DRAWING	J.CH.OU	DATE	20-1-2017	MATERIAL	*
			0.000±0.05			CHECK	T.Y.LI	DATE	20-1-2017	DWG. NO.	TZ\SH556D-A/1.0
						APPROVAL		DATE		SHEET	

F

E

D

C

B

A