

F

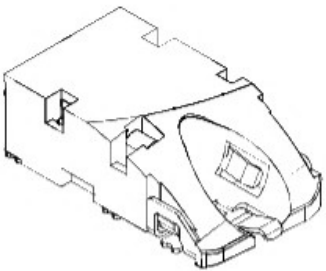
E

D

C

B

A

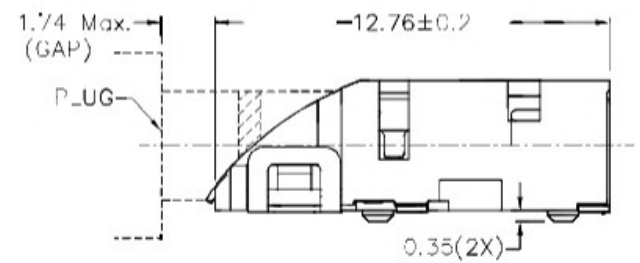
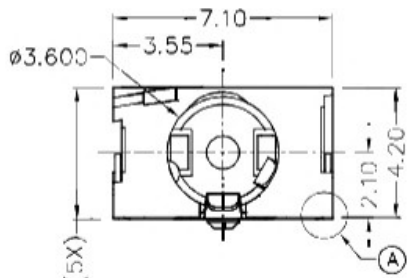
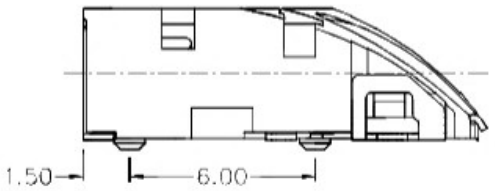


RoHS
Compliant

ZCNF	SYMBOL	REVISION	APPROVAL	DATE

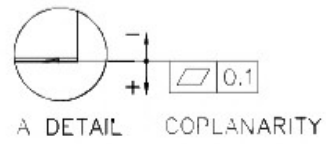
1

1



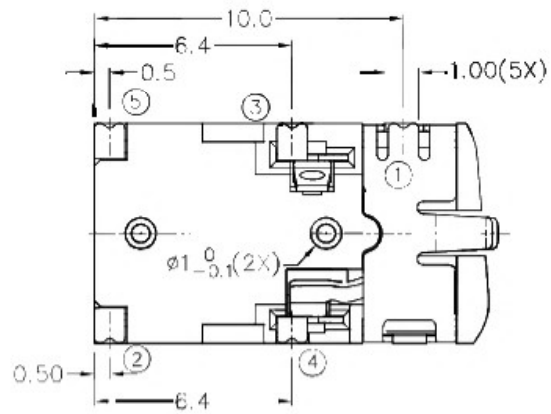
2

2

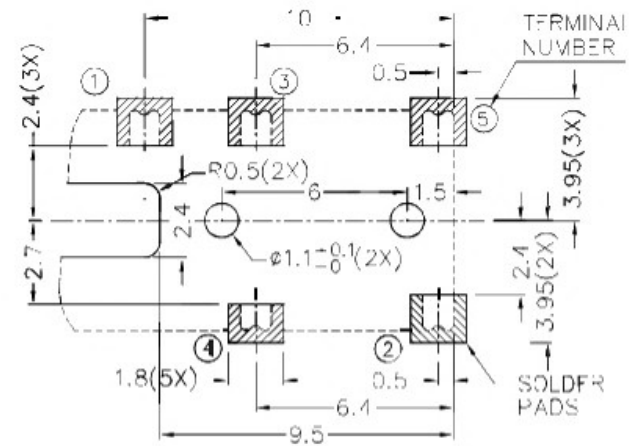


3

3

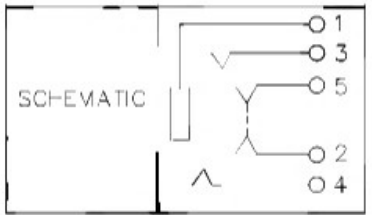
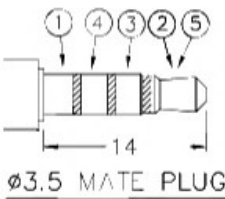


*** MATERIAL**
 TERMINAL 1 : COPPER ALLOY
 TERMINAL 2 : COPPER ALLOY
 TERMINAL 3 : COPPER ALLOY
 TERMINAL 4 : COPPER ALLOY
 TERMINAL 5 : COPPER ALLOY
 HOUSING : HIGH TEMP. PLASTIC



4

4



RECOMMENDED PCB LAYOUT
 TOLERANCE: ±0.05
 (TOP VIEW)

广东科斯达开关厂

PART NAME	3.5mm SMD STEREO JACK	TOLERANCE UNLESS OTHERWISE SPECIFIED:	0.0±0.2 0.00±0.1 0.000±0.05	UNIT:	mm
-----------	-----------------------	---------------------------------------	-----------------------------------	-------	----

DESIGN	H.L.TAN	DATE	8-5-2013	SCALE	4:1
DRAWING	H.Q.ZHOU	DATE	14-2-2017	MATERIAL	×
CHECK	T.Y.LI	DATE	14-2-2017	DWG. NO.	TZ\SH580D-A/1.0
APPROVAL		DATE		SHEET	

F

E

D

C

B

A