

F

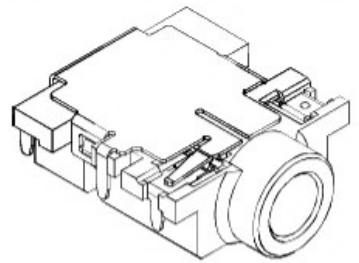
E

D

C

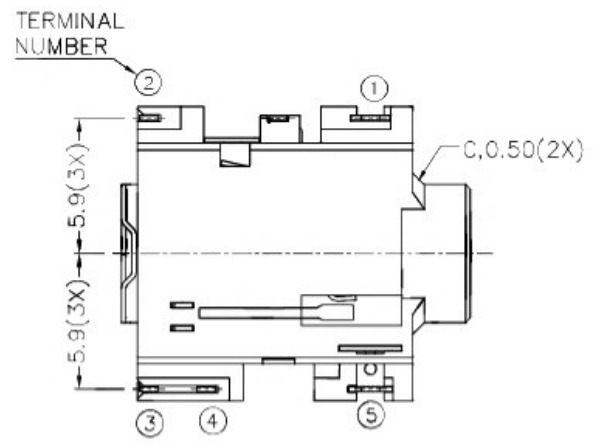
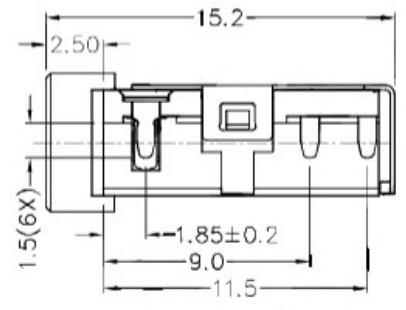
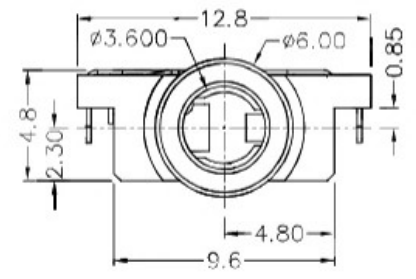
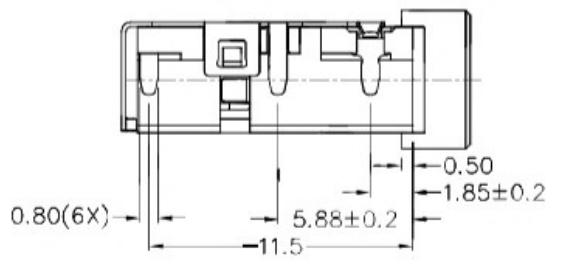
B

A

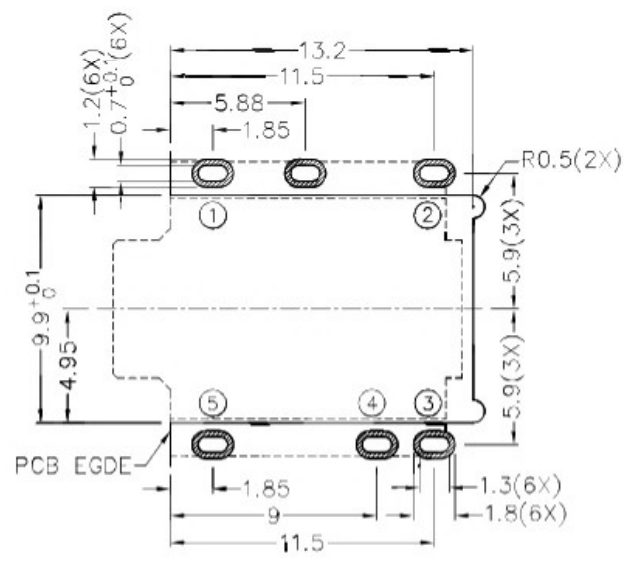
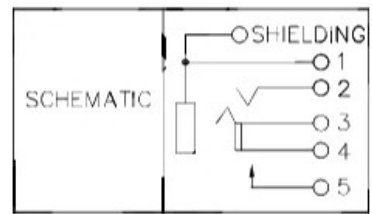


RoHS
Compliant

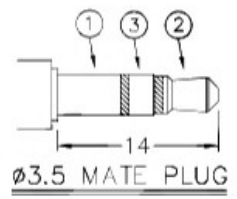
ZONE	SYMBOL	REVISION	APPROVAL	DATE



*** MATERIAL**
 TERMINAL 1 : COPPER ALLOY
 TERMINAL 2 : COPPER ALLOY
 TERMINAL 3 : COPPER ALLOY
 TERMINAL 4 : COPPER ALLOY
 TERMINAL 5 : COPPER ALLOY
 SHIELD : COPPER ALLOY
 HOUSING : HIGH TEMP. PLASTIC



RECOMMENDED PCB LAYOUT
 TOLERANCE: ±0.05
 (TOP VIEW)



广东科斯达开关厂

PART NAME	3.5mm SMD STEREO JACK	TOLERANCE UNLESS 0.0±0.2 0.00±0.1 OTHERWISE SPECIFIED: 0.000±0.05	UNIT: mm	DESIGN	H.L.TAN	DATE	12-5-2011	SCALE	3:1
				DRAWING	H.Q.ZHOU	DATE	13-1-2017	MATERIAL	*
PART NO.				CHECK	T.Y.LI	DATE	13-1-2017	DWG. NO.	TZ\SH517DS2-A/1.0
				APPROVAL		DATE		SHEET	

F

E

D

C

B

A