

F

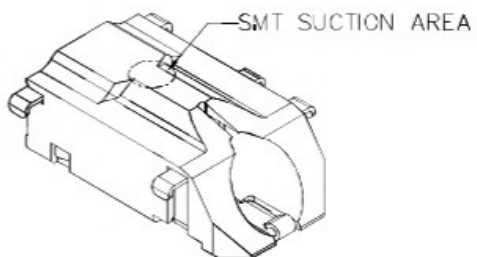
E

D

C

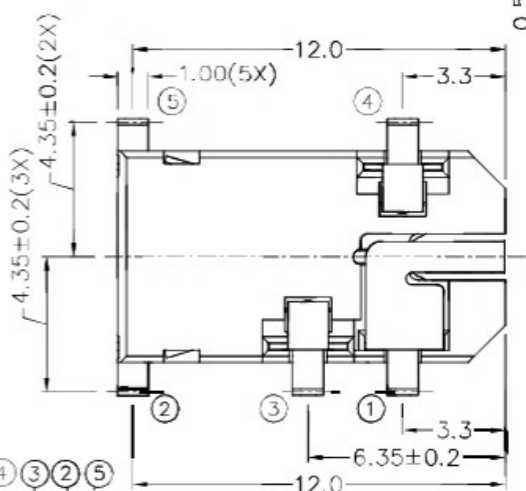
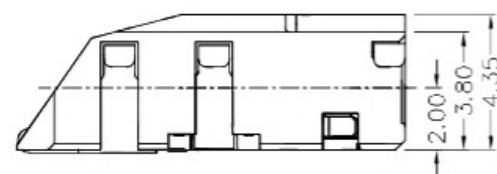
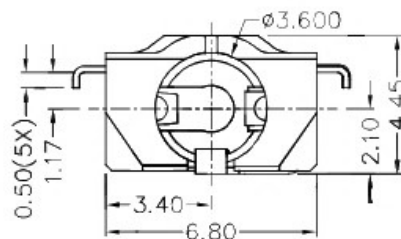
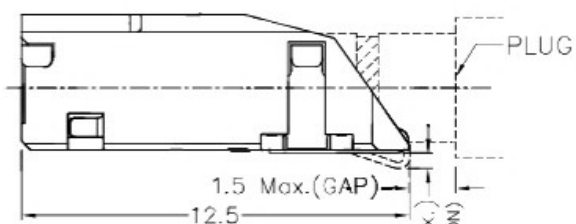
B

A



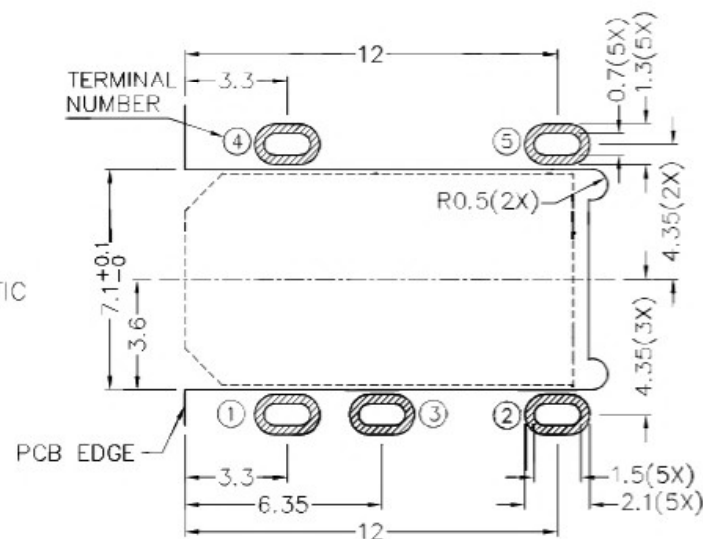
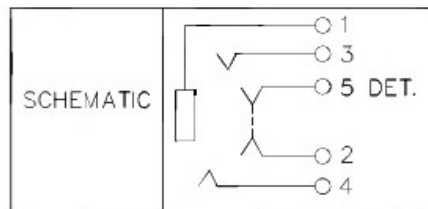
RoHS
Compliant

ZONE	SYMBOL	REVISION	APPROVAL	DATE

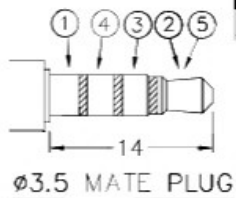


* MATERIAL

TERMINAL 1 : COPPER ALLOY
 TERMINAL 2 : COPPER ALLOY
 TERMINAL 3 : COPPER ALLOY
 TERMINAL 4 : COPPER ALLOY
 TERMINAL 5 : COPPER ALLOY
 HOUSING : HIGH TEMP. PLASTIC



RECOMMENDED PCB LAYOUT
 TOLERANCE: ±0.05
 (TOP VIEW)



ø3.5 MATE PLUG

广东科斯达开关厂

DESIGN	G.P.YI	DATE	7-10-2013	SCALE	4:1
DRAWING	H.Q.ZHOU	DATE	14-2-2017	MATERIAL	*
CHECK	T.Y.LI	DATE	14-2-2017	DWG. NO.	TZ\SH579D-A/1.0
APPROVAL		DATE		SHEET	

PART NAME 3.5mm SMD STEREO JACK

TOLERANCE UNLESS 0.0±0.2

UNIT: mm

PART NO.

OTHERWISE SPECIFIED: 0.00±0.1
0.000±0.05



APPROVAL

DATE

SHEET

F

E

D

C

B

A