

F

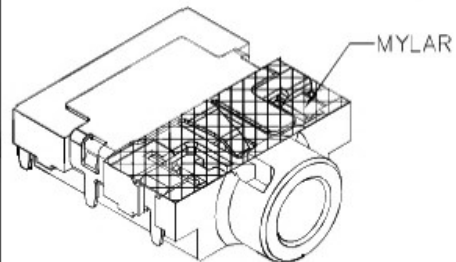
E

D

C

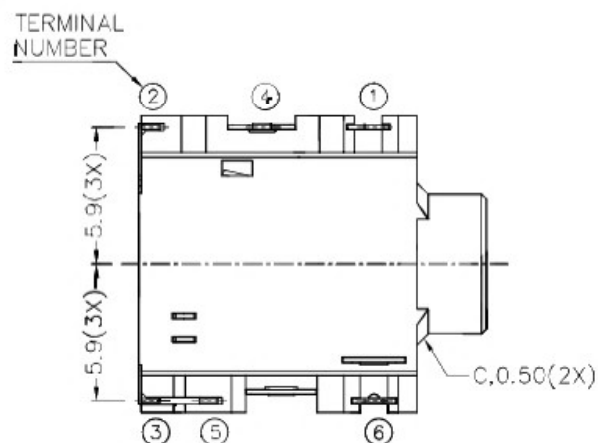
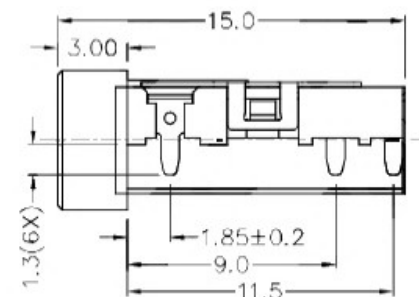
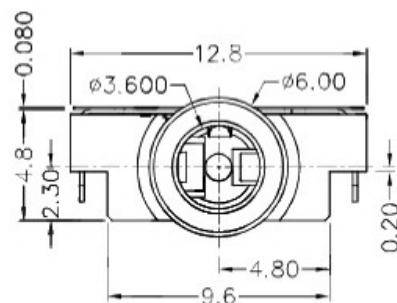
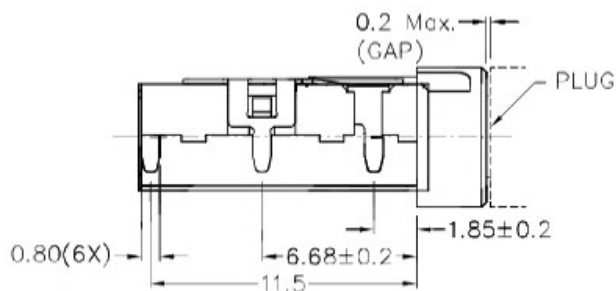
B

A



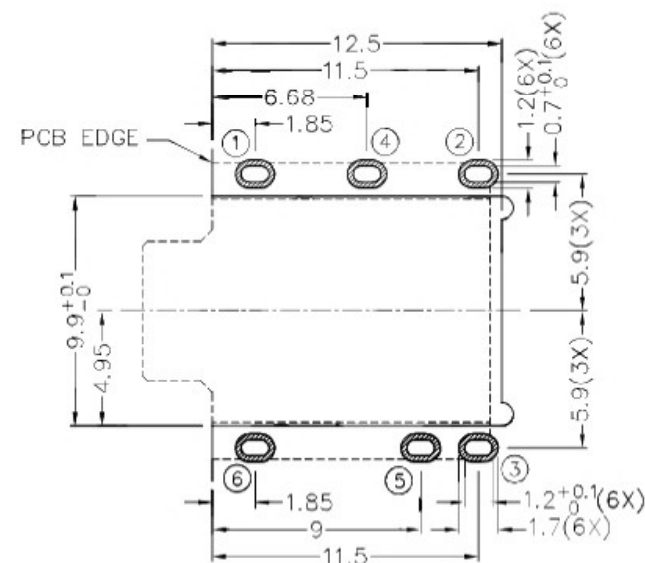
RoHS
Compliant

ZONE	SYMBOL	REVISION	APPROVAL	DATE

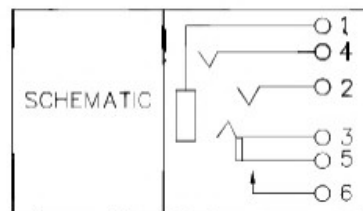
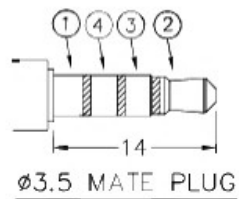


* MATERIAL

TERMINAL 1 : COPPER ALLOY
 TERMINAL 2 : COPPER ALLOY
 TERMINAL 3 : COPPER ALLOY
 TERMINAL 4 : COPPER ALLOY
 TERMINAL 5 : COPPER ALLOY
 TERMINAL 6 : COPPER ALLOY
 HOUSING : HIGH TEMP. PLASTIC
 MYLAR : POLYIMIDE



RECOMMENDED PCB LAYOUT
 TOLERANCE: ±0.05
 (TOP VIEW)




 广东科斯达开关厂

DESIGN	H.L.TAN	DATE	20-3-2014	SCALE	3:1
DRAWING	W.Q.ZHOU	DATE	14-2-2017	MATERIAL	*
CHECK	T.Y.LI	DATE	14-2-2017	DWG. NO.	TZ\SH581DT1-A/1.0
APPROVAL		DATE		SHEET	

PART NAME 3.5mm SMD STEREO JACK

TOLERANCE UNLESS 0.0±0.2
 OTHERWISE SPECIFIED: 0.00±0.1
 0.000±0.05

UNIT: 
 mm

F

E

D

C

B

A