

F

E

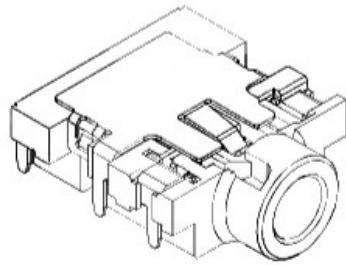
D

C

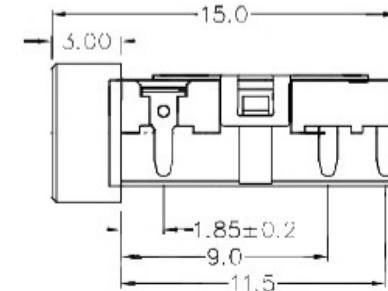
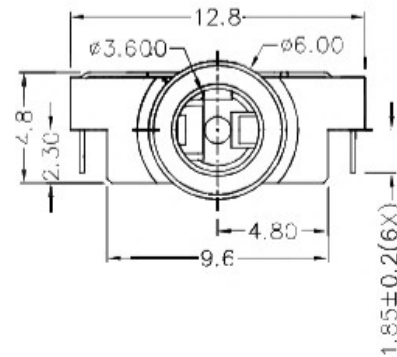
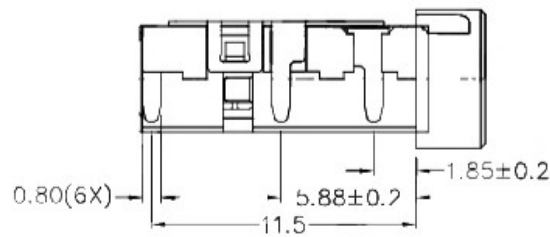
B

A

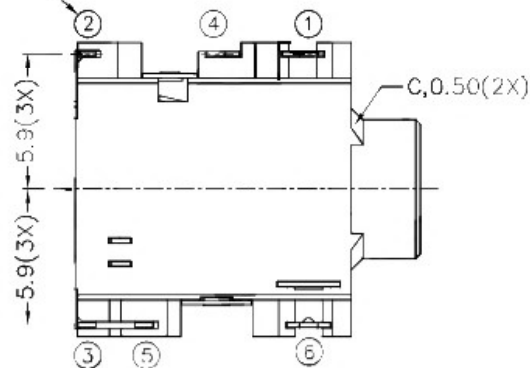
ZCNF	SYMBOL	REVISION	APPROVAL	DATE



RoHS
Compliant

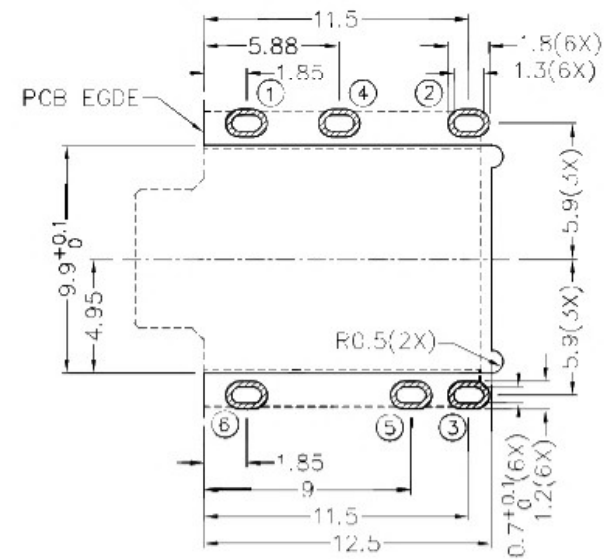


TERMINAL
NUMBER

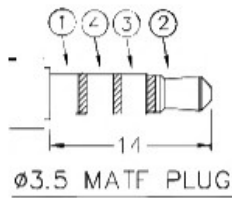
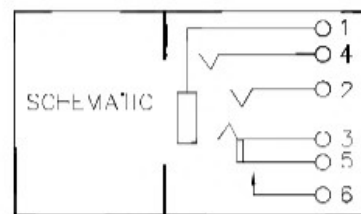


* MATERIAL

TERMINAL 1 : COPPER ALLOY
 TERMINAL 2 : COPPER ALLOY
 TERMINAL 3 : COPPER ALLOY
 TERMINAL 4 : COPPER ALLOY
 TERMINAL 5 : COPPER ALLOY
 TERMINAL 6 : COPPER ALLOY
 HOUSING : HIGH TEMP. PLASTIC




RECOMMENDED PCB LAYOUT
 TOLERANCE: ±0.05
 (TOP VIEW)



 广东科斯达开关厂

DESIGN	H.J.TAN	DATE	27-9-2011	SCALE	3:1
DRAWING	J.CHOU	DATE	18-1-2017	MATERIAL	*
CHECK	T.Y.LI	DATE	18-1-2017	DWG. NO.	TZ\SH-542D-A/1.0
APPROVAL		DATE		SHEET	

PART NAME	3.5mm SMD STEREO JACK	TOLERANCE UNLESS	0.0±0.2	UNIT:	
PART NO.		OTHERWISE SPECIFIED:	0.00±0.1 0.000±0.05	mm	

F

E

D

C

B

A