

F

E

D

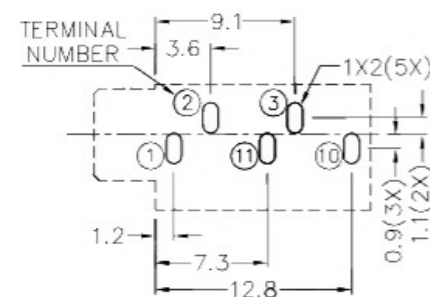
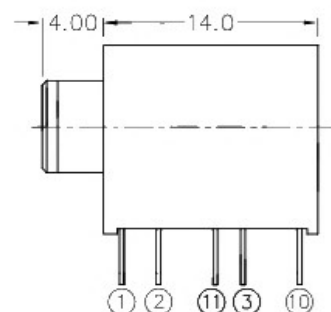
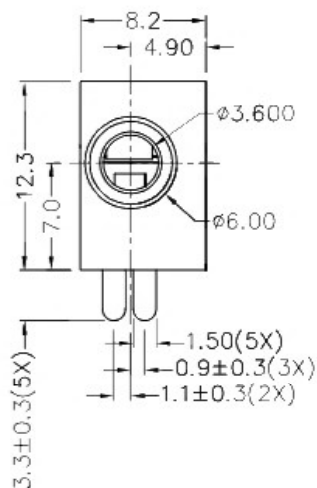
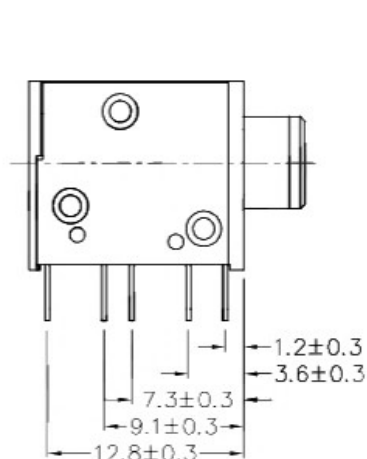
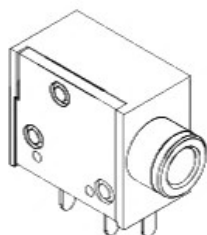
C

B

A

| ZONE | SYMBOL | REVISION | APPROVAL | DATE |
|------|--------|----------|----------|------|
| | | | | |
| | | | | |
| | | | | |

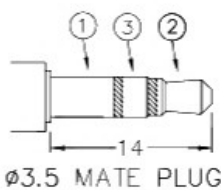
RoHS
Compliant



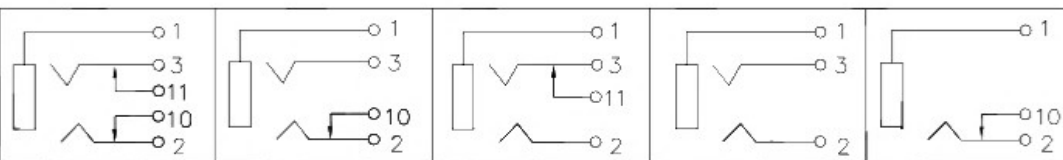
RECOMMENDED PCB LAYOUT
TOLERANCE: ± 0.05
(TOP VIEW)

* MATERIAL

TERMINAL 1 : BRASS
TERMINAL 2 : BRASS
TERMINAL 3 : BRASS
TERMINAL 10 : BRASS
TERMINAL 11 : BRASS
BUSHING : BRASS
SPRING : STAINLESS STEEL
HOUSING : THERMOPLASTIC
COVER : THERMOPLASTIC



SCHEMATIC



广东科斯达开关厂

| | | | | | | | | | | | |
|-----------|-------------------|----------------------|---------------------|-------|----|----------|-----------|------|------------|----------|----------------|
| PART NAME | 3.5mm STEREO JACK | TOLERANCE UNLESS | 0.0±0.2 0.00±0.1 | UNIT: | mm | DESIGN | J.X.KUANG | DATE | 21-7-2005 | SCALE | 2:1 |
| PART NO. | | OTHERWISE SPECIFIED: | 0.000±0.05 | | | DRAWING | H.Q.ZHOU | DATE | 15-12-2016 | MATERIAL | * |
| | | | | | | CHECK | T.Y.LI | DATE | 15-12-2016 | DWG. NO. | TZ\SH365-B/1.0 |
| | | | | | | APPROVAL | | DATE | | SHEET | |

F

E

D

C

B

A