

F

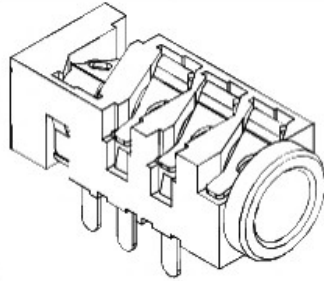
E

D

C

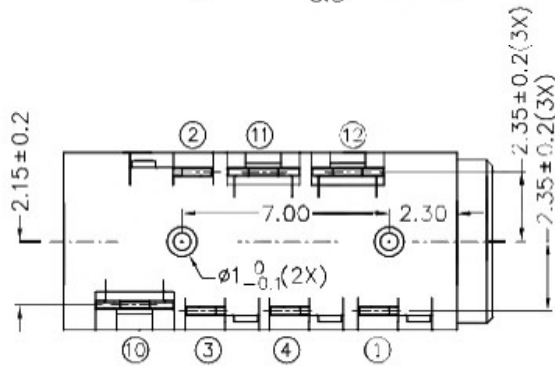
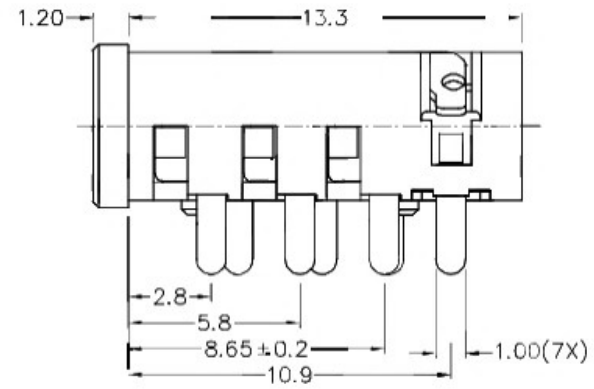
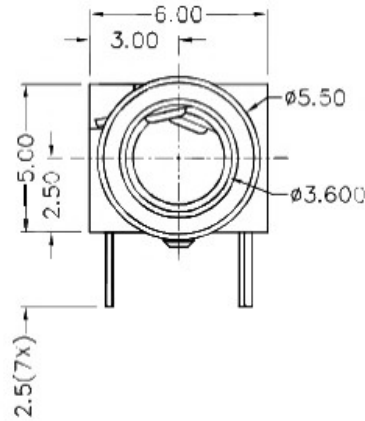
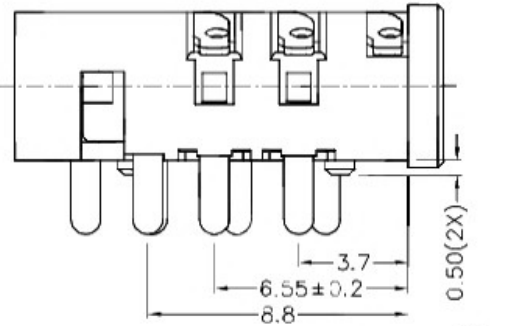
B

A



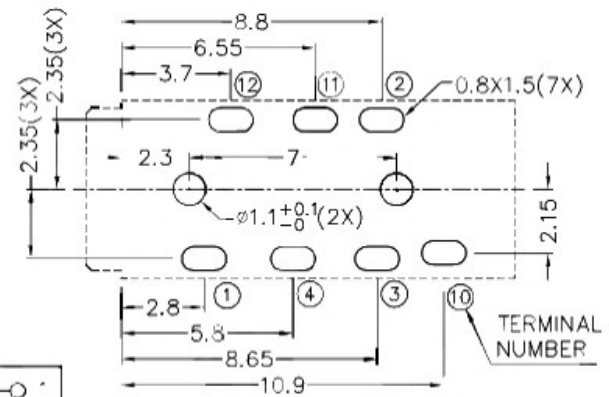
RoHS  
Compliant

ZONE	SYMBOL	REVISION	APPROVAL	DATE

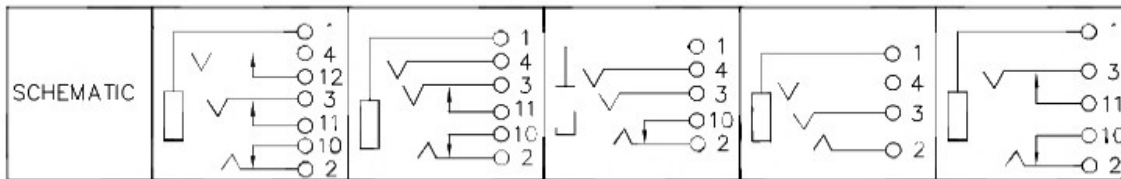
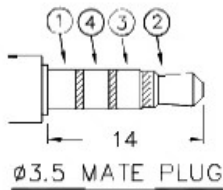


\* MATERIAL

- TERMINAL 1 : COPPER ALLOY
- TERMINAL 2 : COPPER ALLOY
- TERMINAL 3 : COPPER ALLOY
- TERMINAL 4 : COPPER ALLOY
- TERMINAL 10 : BRASS
- TERMINAL 11 : BRASS
- TERMINAL 12 : BRASS
- HOUSING : HIGH TEMP. PLASTIC



RECOMMENDED PCB LAYOUT  
TOLERANCE: ±0.05  
(TOP VIEW)



广东科斯达开关厂

DESIGN	T.Y.LI	DATE	23-1-2007	SCALE	4:1
DRAWING	J.H.ZHOU	DATE	19-9-2016	MATERIAL	*
CHECK	H.L.TAN	DATE	19-9-2016	DWG. \O.	TZ\SH391-A/1.0
APPROVAL		DATE	19-9-2016	SHEET	

PART NAME 3.5mm STEREO JACK  
PART NO.

TOLERANCE UNLESS 0.0±0.2  
OTHERWISE SPECIFIED: 0.00±0.1  
0.000±0.05 UNIT: mm

F

E

D

C

B

A