

F

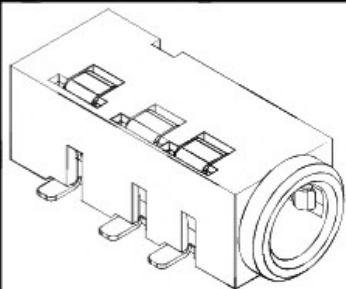
E

D

C

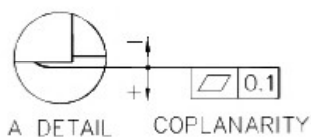
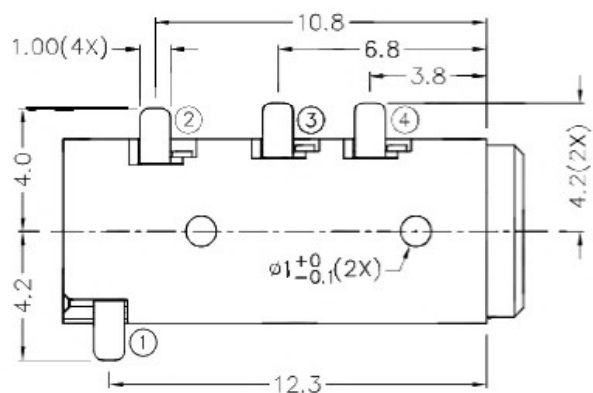
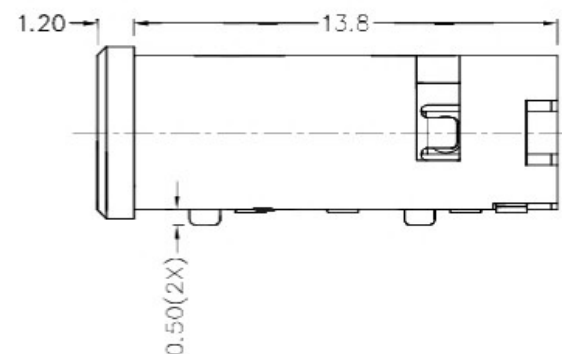
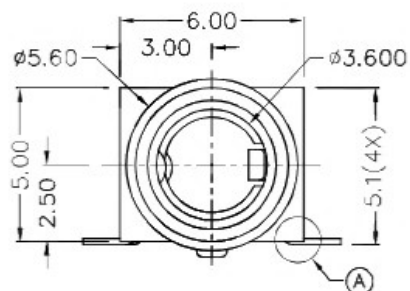
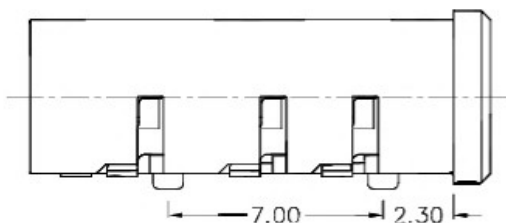
B

A



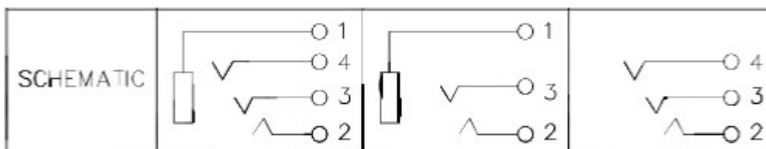
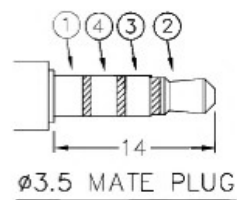
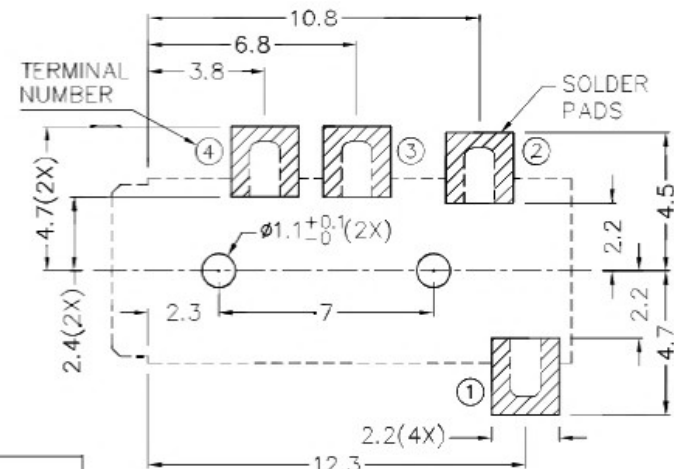
RoHS  
Compliant

ZONE	SYMBOL	REVISION	APPROVAL	DATE
		ADD MODEL NO.: TSH-3713B	J.X.KUANG	8-2-2017



\* MATERIAL

TERMINAL 1 : COPPER ALLOY  
 TERMINAL 2 : COPPER ALLOY  
 TERMINAL 3 : COPPER ALLOY  
 TERMINAL 4 : COPPER ALLOY  
 HOUSING : HIGH TEMP. PLASTIC



广东科斯达开关厂

PART NAME 3.5mm SMD STEREO JACK  
 PART NO.

TOLERANCE UNLESS  $0.0 \pm 0.2$   
 OTHERWISE SPECIFIED:  $0.00 \pm 0.1$   
 $0.000 \pm 0.05$  UNIT: mm

DESIGN	J.X.KUANG	DATE	21-7-2004	SCALE	4:1
DRAWING	T.Y.LI	DATE	8-2-2017	MATERIAL	*
CHECK	H.L.TAN	DATE	8-2-2017	DWG. NO.	TZ\SH371-A/2.0
APPROVAL		DATE		SHEET	

F

E

D

C

B

A