

F

E

D

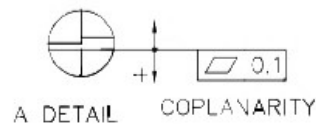
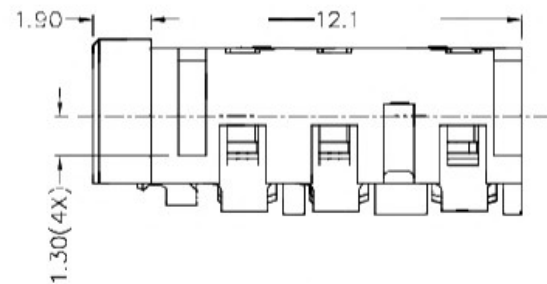
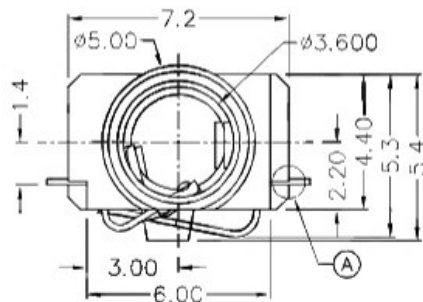
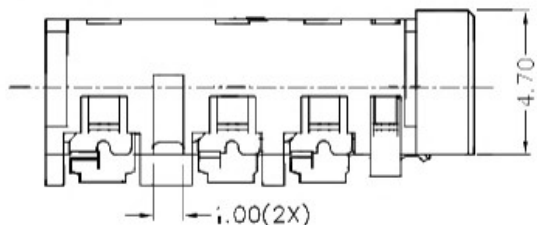
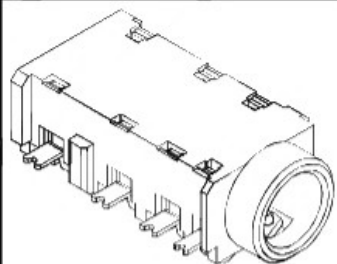
C

B

A

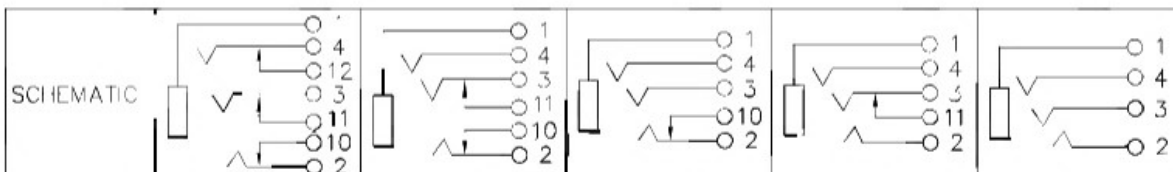
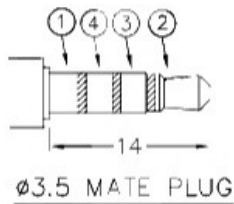
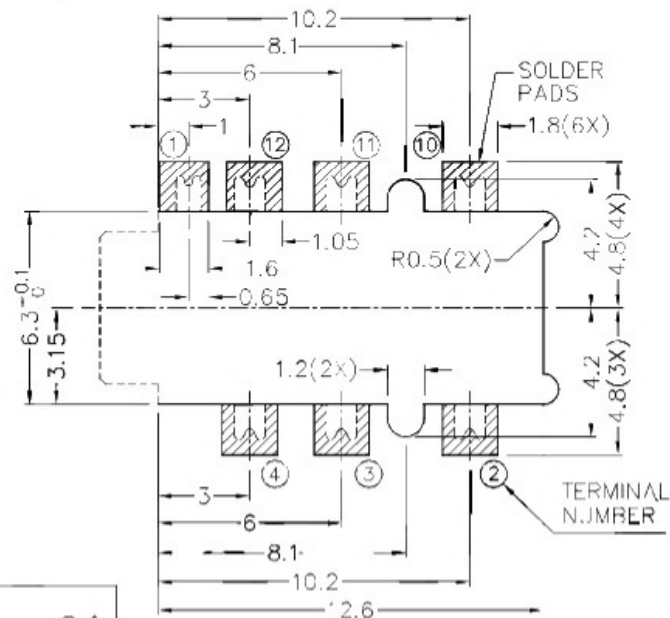
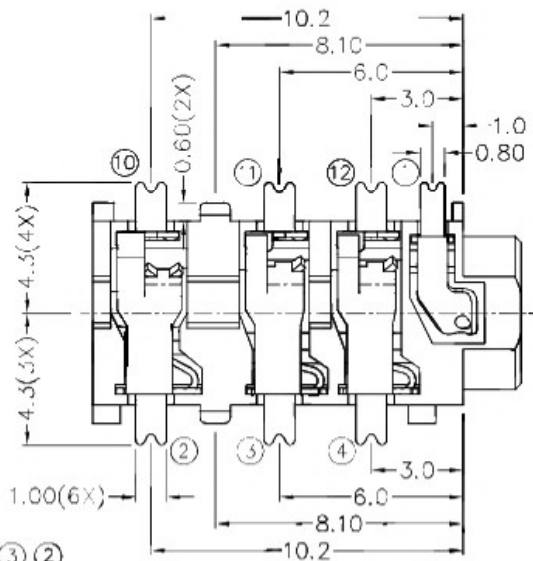
ZCNF	SYMBOL	REVISION	APPROVAL	DATE

RoHS  
Compliant



\* MATERIAL

TERMINAL 1 : COPPER ALLOY  
 TERMINAL 2 : COPPER ALLOY  
 TERMINAL 3 : COPPER ALLOY  
 TERMINAL 4 : COPPER ALLOY  
 TERMINAL 10 : COPPER ALLOY  
 TERMINAL 11 : COPPER ALLOY  
 TERMINAL 12 : COPPER ALLOY  
 HOUSING : HIGH TEMP. PLASTIC



RECOMMENDED PCB LAYOUT  
 TOLERANCE: ±0.05  
 (TOP VIEW)

广东科斯达开关厂

PART NAME	3.5mm SMD STEREO JACK	TOLERANCE UNLESS	0.0±0.2	UNIT:	mm	DESIGN	G.P.YI	DATE	1-7-2006	SCALE	4:1
PART NO.		OTHERWISE SPECIFIED:	0.00±0.1			DRAWING	T.Y.LI	DATE	3-1-2017	MATERIAL	*
			0.000±0.05			CHECK	H.L.TAN	DATE	3-1-2017	DWG. NO.	Z\SH392D-A/1.0
						APPROVAL		DATE		SHEET	

F

E

D

C

B

A