

F

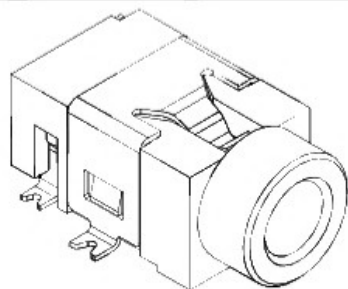
E

D

C

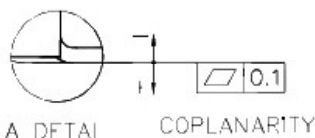
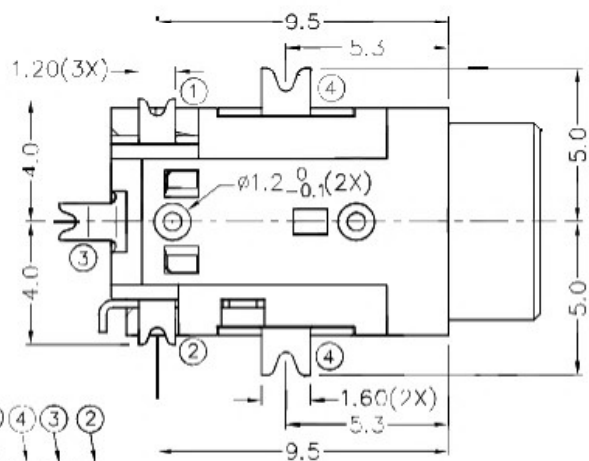
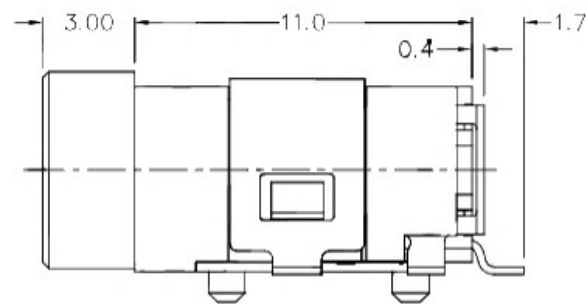
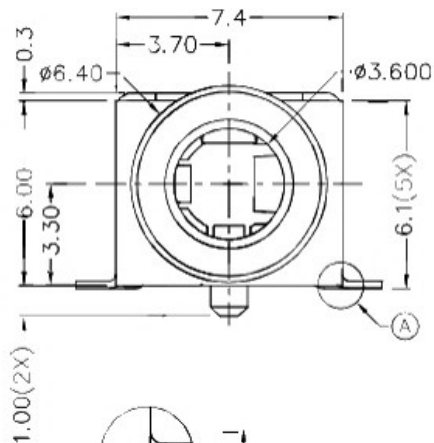
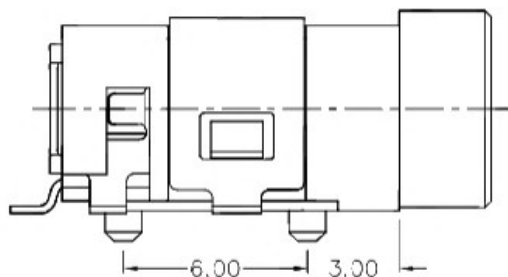
B

A



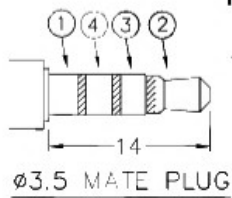
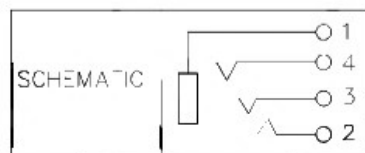
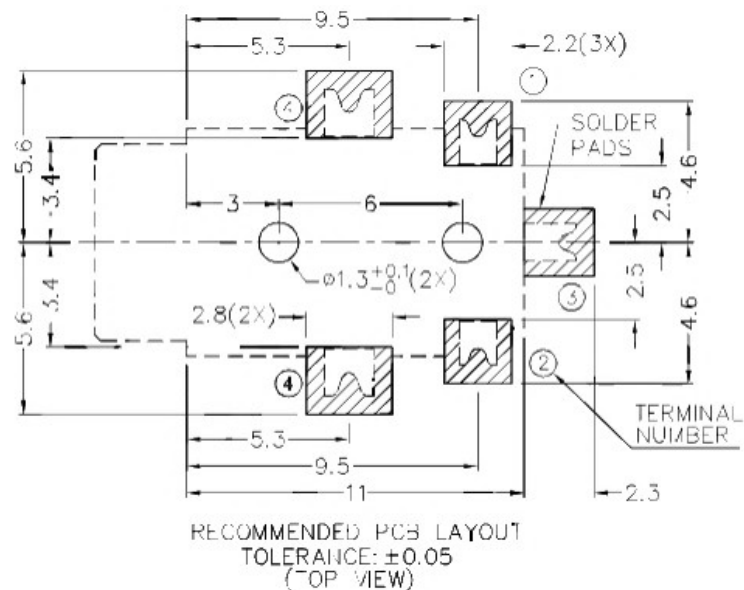
RoHS
Compliant

ZCNF	SYMBOL	REVISION	APPROVAL	DATE



* MATERIAL

TERMINAL 1 : COPPER ALLOY
 TERMINAL 2 : COPPER ALLOY
 TERMINAL 3 : COPPER ALLOY
 TERMINAL 4 : COPPER ALLOY
 HOUSING : HIGH TEMP. PLASTIC



广东科斯达开关厂

PART NAME	3.5mm SMD STRFO JACK	TOLERANCE UNLESS	0.0±0.2	UNIT:	mm	DESIGN	T.Y.LI	DATE	19-9-2006	SCALE	4:1
PART NO.		OTHERWISE SPECIFIED:	0.00±0.1				DRAWING	J.C.LOU	DATE	3-1-2007	MATERIAL
			0.030±0.05			CHECK	H.L.TAN	DATE	3-1-2007	DWG. NO.	TZ\SH394D-A/1.0
						APPROVAL		DATE		SHEET	

F

E

D

C

B

A