

F

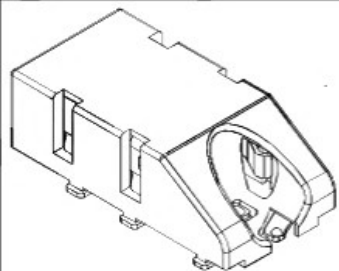
E

D

C

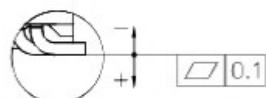
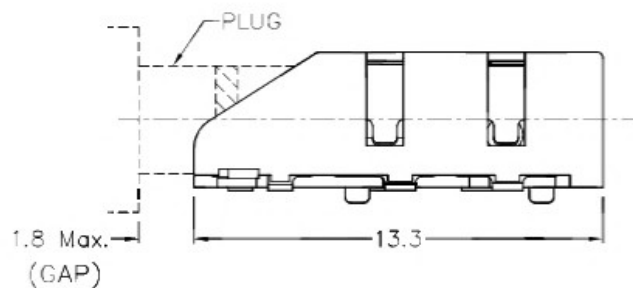
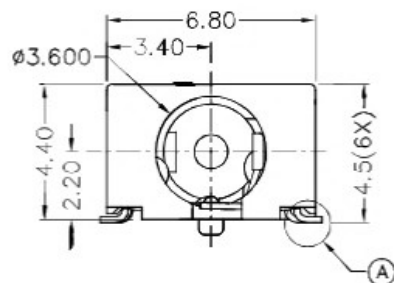
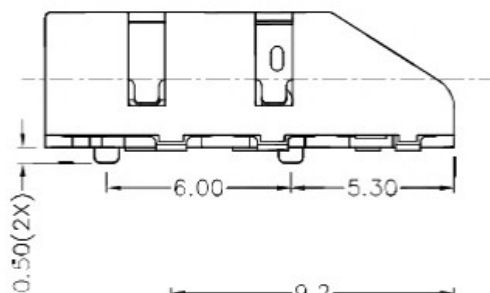
B

A



RoHS
Compliant

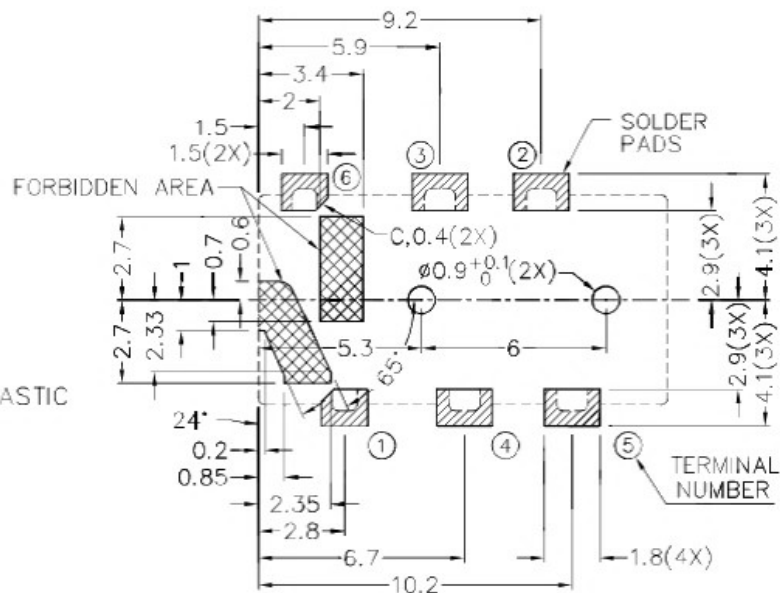
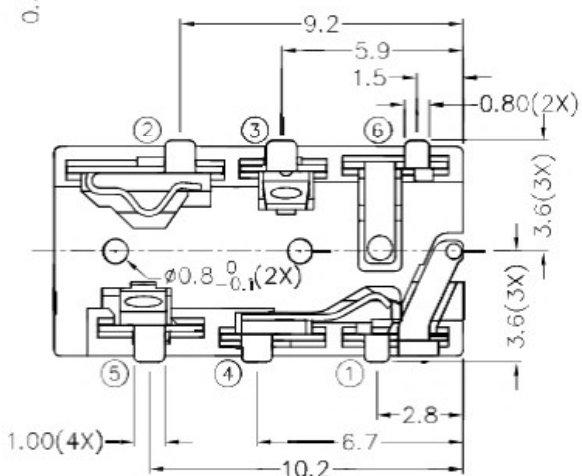
| ZONE | SYMBOL | REVISION | APPROVAL | DATE |
|------|--------|----------|----------|------|
| | | | | |
| | | | | |
| | | | | |



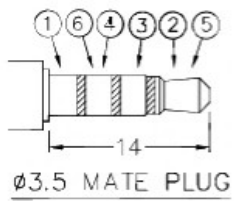
A DETAIL COPLANARITY

* MATERIAL

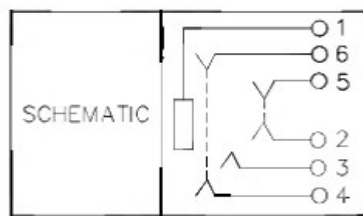
TERMINAL 1 : COPPER ALLOY
 TERMINAL 2 : COPPER ALLOY
 TERMINAL 3 : COPPER ALLOY
 TERMINAL 4 : COPPER ALLOY
 TERMINAL 5 : COPPER ALLOY
 TERMINAL 6 : COPPER ALLOY
 HOUSING : HIGH TEMP. PLASTIC



RECOMMENDED PCB LAYOUT
 TOLERANCE: ± 0.05
 (TOP VIEW)



Ø3.5 MATE PLUG



 广东科斯达开关厂

PART NAME 3.5mm SMD STEREO JACK
 PART NO.

TOLERANCE UNLESS 0.0 ± 0.2
 OTHERWISE SPECIFIED: 0.00 ± 0.1
 0.000 ± 0.05

UNIT: mm



| | | | | | |
|----------|----------|------|------------|----------|-----------------|
| DESIGN | T.Y.LI | DATE | 26-11-2011 | SCALE | 4:1 |
| DRAWING | J.H.ZHOU | DATE | 24-10-2016 | MATERIAL | * |
| CHECK | H.L.TAN | DATE | 24-10-2016 | DWG. NO. | TZ\SH541D-A/1.0 |
| APPROVAL | | DATE | | SHEET | |

F

E

D

C

B

A