

F

E

D

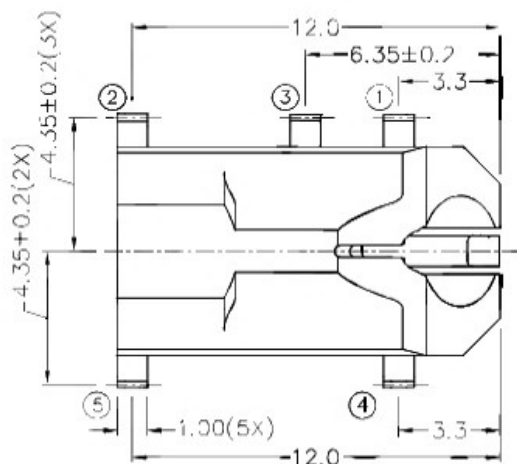
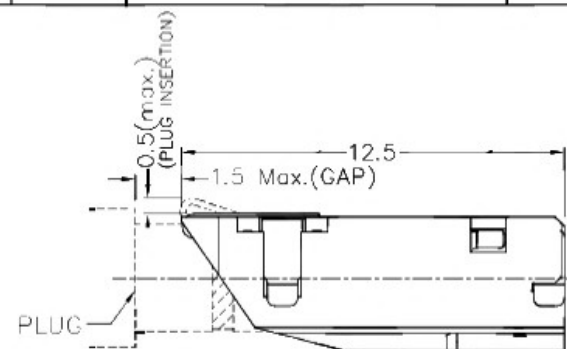
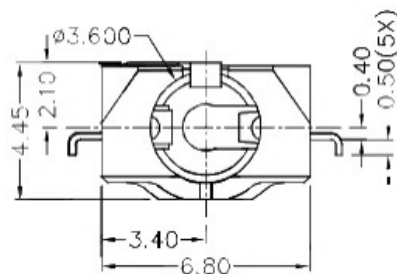
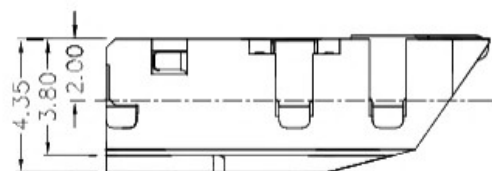
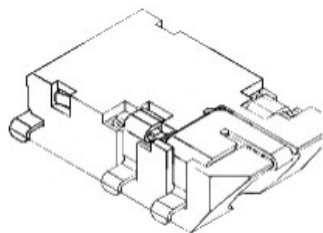
C

B

A

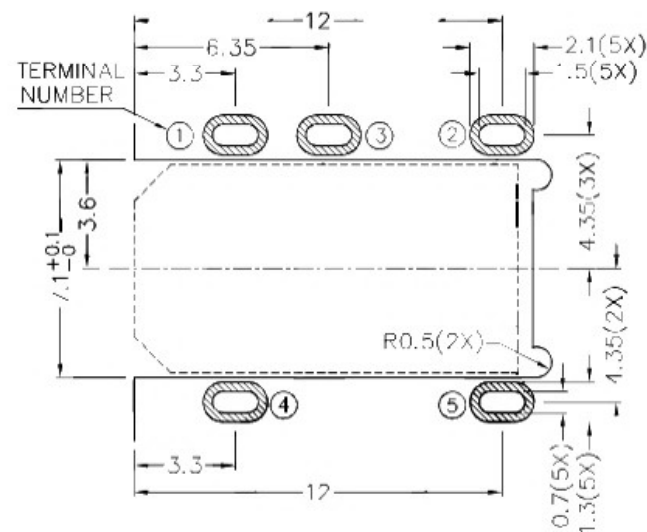
RoHS  
Compliant

ZONE	SYMBOL	REVISION	APPROVAL	DATE

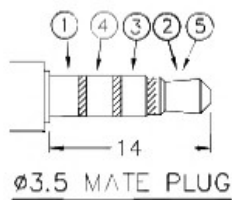
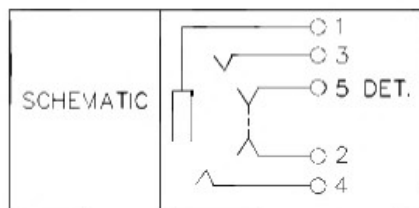


## \* MATERIAL

TERMINAL 1 : COPPER ALLOY  
 TERMINAL 2 : COPPER ALLOY  
 TERMINAL 3 : COPPER ALLOY  
 TERMINAL 4 : COPPER ALLOY  
 TERMINAL 5 : COPPER ALLOY  
 HOUSING : HIGH TEMP. PLASTIC



RECOMMENDED PCB LAYOUT  
 TOLERANCE:  $\pm 0.05$   
 (TOP VIEW)



DESIGN	G.P.YI	DATE	7-10-2013	SCALE	4:1
DRAWING	J.H.ZHOU	DATE	14-2-2017	MATERIAL	*
CHECK	T.Y.LI	DATE	14-2-2017	DWG. NO.	TZ\SH585D-A/1.0
APPROVAL		DATE		SHEET	

PART NAME  
3.5mm SMD STEREO JACK

TOLERANCE UNLESS  
0.0±0.2  
0.00±0.1  
OTHERWISE SPECIFIED:  
0.000±0.05

UNIT:  
mm

F

E

D

C

B

A