

F

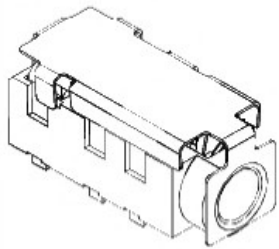
E

D

C

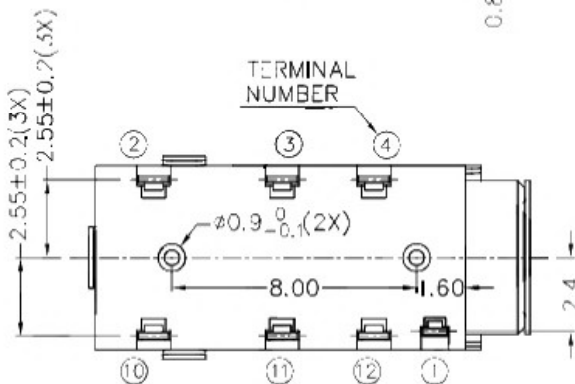
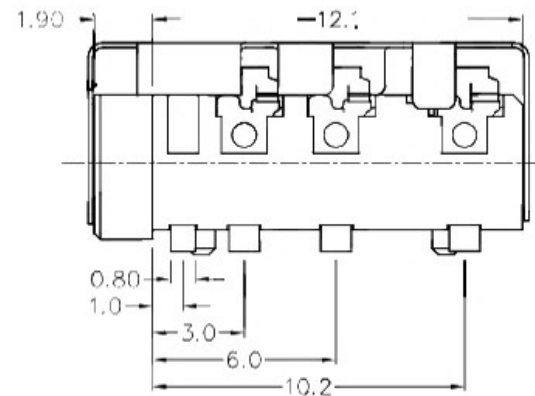
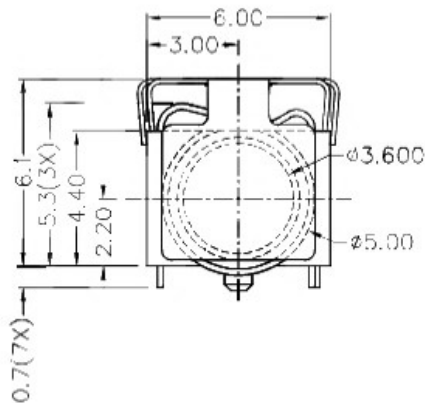
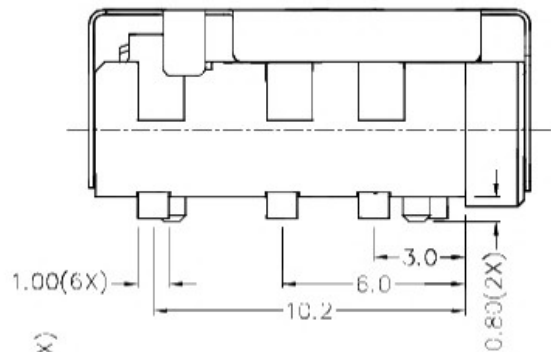
B

A



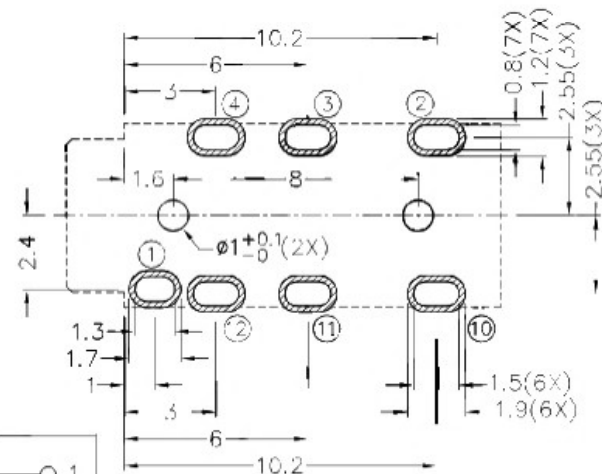
RoHS
Compliant

ZCNF	SYMBOL	REVISION	APPROVAL	DATE

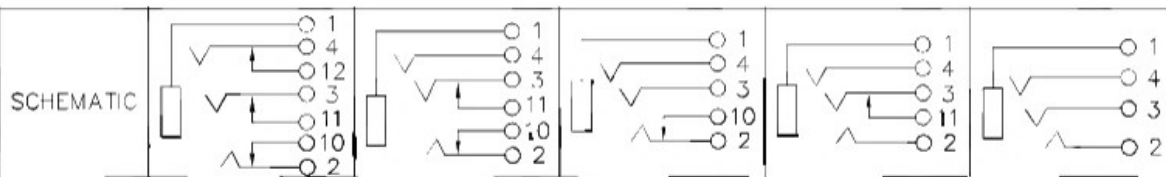
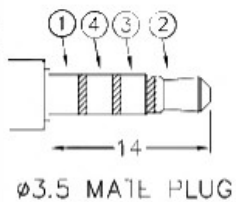


* MATERIAL

TERMINAL 1 : COPPER ALLOY
 TERMINAL 2 : COPPER ALLOY
 TERMINAL 3 : COPPER ALLOY
 TERMINAL 4 : COPPER ALLOY
 TERMINAL 10: BRASS
 TERMINAL 11: BRASS
 TERMINAL 12: BRASS
 SOLDER : STAINLESS STEEL
 HOUSING : HIGH TEMP. PLASTIC



RECOMMENDED PCB LAYOUT
 TOLERANCE: ±0.05
 (TOP VIEW)



 广东科斯达开关厂

DESIGN	T.Y.LI	DATE	25-11-2005	SCALE	4:1
DRAWING	J.H.ZHOU	DATE	2-1-2017	MATERIAL	*
CHECK	H.L.TAN	DATE	2-1-2017	DWG. NO.	TZ\SH3900SI-2-A/1.0
APPROVAL		DATE		SHEET	

PART NAME	3.5mm SMD STEREO JACK W/HANDING SHIELD	TOLERANCE	UNI FSS	0.0±0.2	UNIT: 
PART NO.		OTHERWISE SPECIFIED:	0.00±0.1	0.00±0.05	

F

E

D

C

B

A