

F

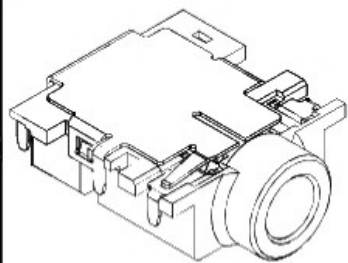
E

D

C

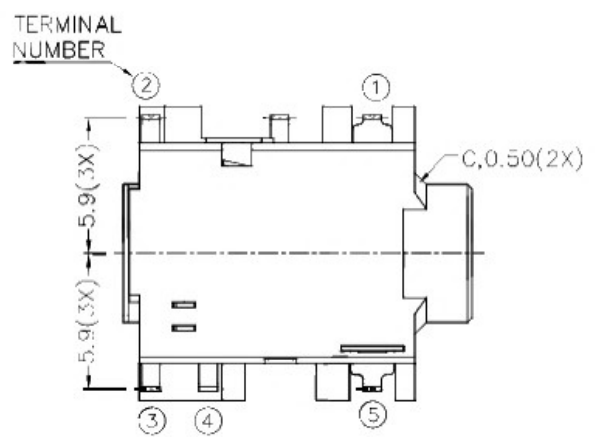
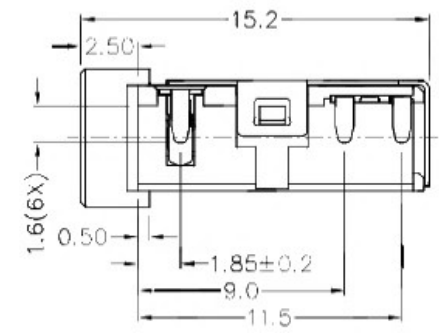
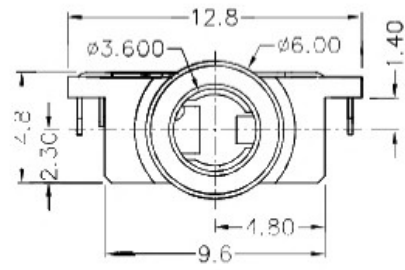
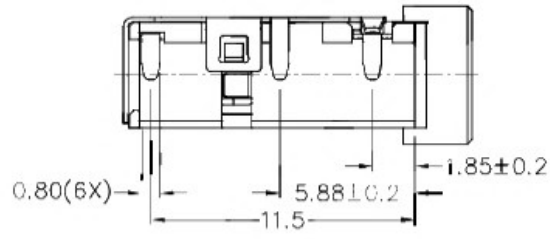
B

A

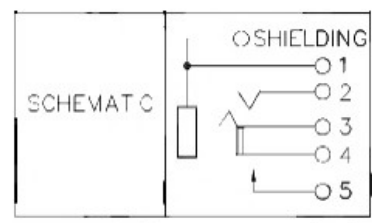
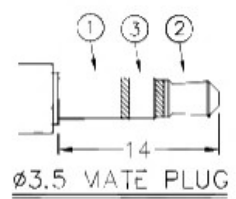
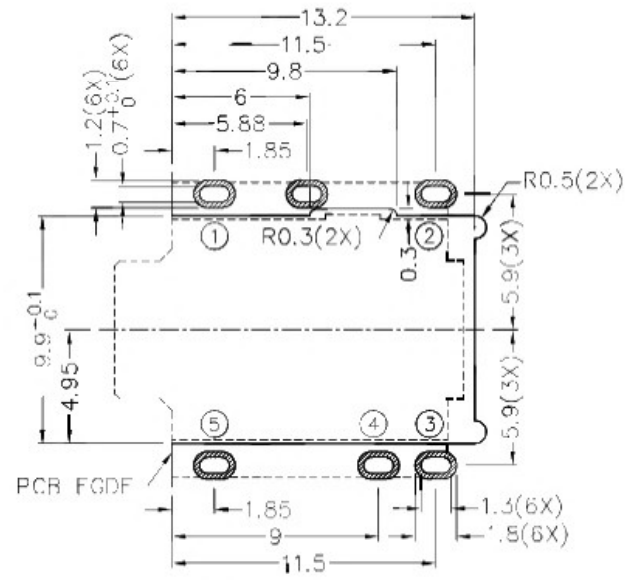


RoHS  
Compliant

ZONE	SYMBOL	REVISION	APPROVAL	DATE
		UPDATE PCB LAYOUT	J.X.KUANG	11-5-2017



- \* MATERIAL
- TERMINAL 1 : COPPER ALLOY
  - TERMINAL 2 : COPPER ALLOY
  - TERMINAL 3 : COPPER ALLOY
  - TERMINAL 4 : COPPER ALLOY
  - TERMINAL 5 : COPPER ALLOY
  - SHIELD : COPPER ALLOY
  - HOUSING : HIGH TEMP. PLASTIC



RECOMMENDED PCB LAYOUT  
TOLERANCE: ±0.05  
(TOP VIEW)

广东科斯达开关厂

PART NAME	3.5mm SMD STEREO JACK	TOLERANCE UNLESS OTHERWISE SPECIFIED:	0.0±0.2 0.00±0.1 0.000±0.05	UNIT:	mm	DESIGN	H.L.TAN	DATE	12-5-2017	SCALE	3:1
PART NO.						DRAWING	H.Q.ZHOU	DATE	11-5-2017	MATERIAL	*
						CHECK	T.Y.LI	DATE	11-5-2017	DWG. NO.	7\SH520DS-A/1.1
						APPROVAL		DATE		SHEET	

F

E

D

C

B

A