

F

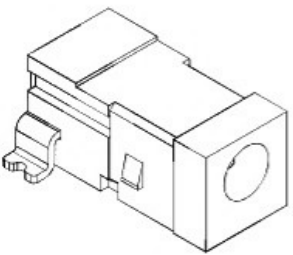
E

D

C

B

A

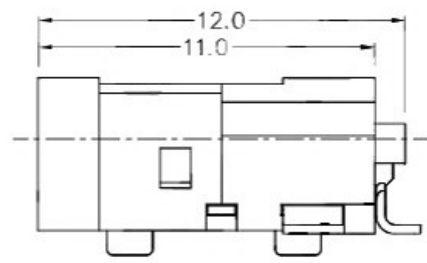
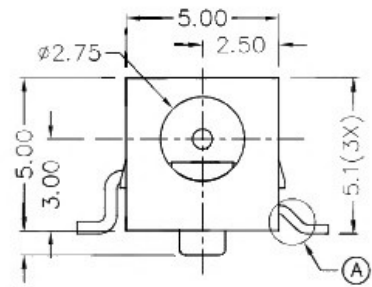
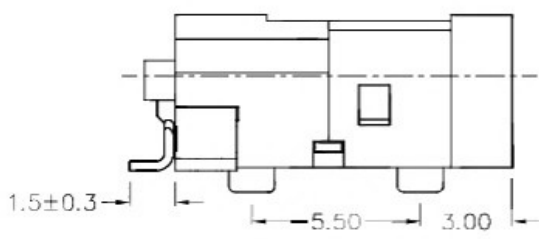


RoHS
Compliant

ZONE	SYMBOL	REVISION	APPROVAL	DATE
		ADJUST THE RECOMMENDED DC MATING PLUG	J.X.KUANG	8-10-2019

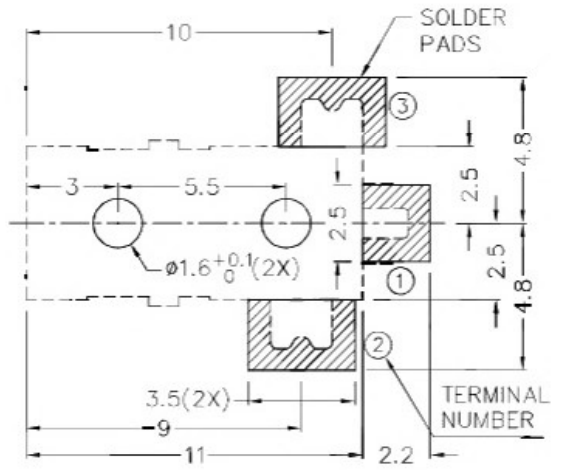
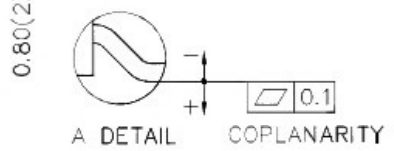
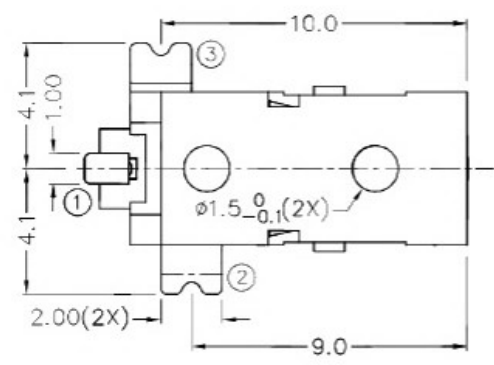
1

1



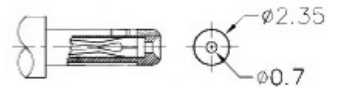
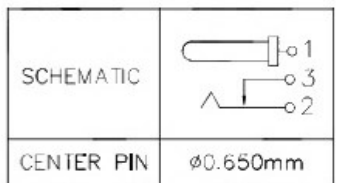
2

2



* MATERIAL
 TERMINAL 1 : COPPER
 TERMINAL 2 : COPPER ALLOY
 TERMINAL 3 : BRASS
 HOUSING : HIGH TEMP. PLASTIC

RECOMMENDED PCB LAYOUT
 TOLERANCE: ±0.05
 (TOP VIEW)



RECOMMENDED
 DC MATING PLUG

3

3

4

4

广东科斯达开关厂

PART NAME		HIGH CURRENT SMD DC POWER SOCKET	TOLERANCE UNLESS	0.0±0.2	UNIT:	DESIGN	T.Y.LI	DATE	10-10-2003	SCALE	4:1
PART NO.			OTHERWISE SPECIFIED:	0.00±0.1	mm	DRAWING	H.Q.ZHOU	DATE	8-10-2019	MATERIAL	*
				0.000±0.05		CHECK	H.L.TAN	DATE	8-10-2019	DWG. NO.	TZ\DC031H-A/1.1
						APPROVAL		DATE		SHEET	A

F

E

D

C

B

A