

F

E

D

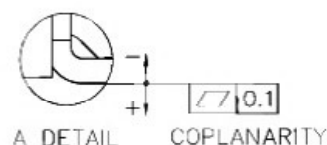
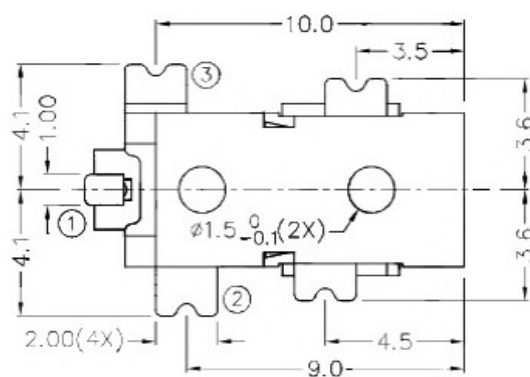
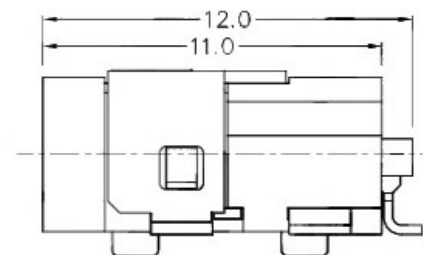
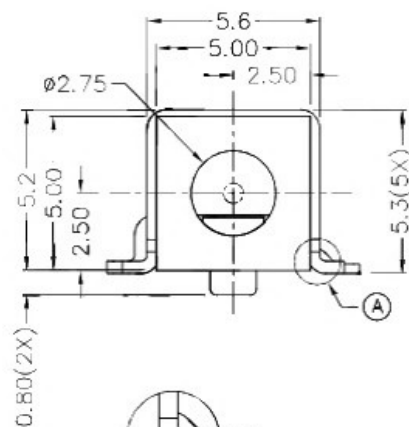
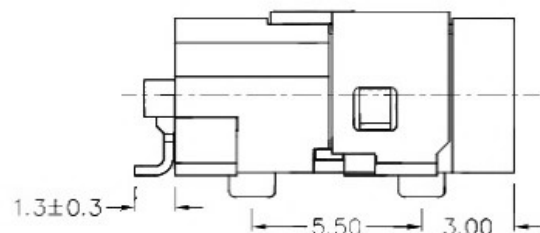
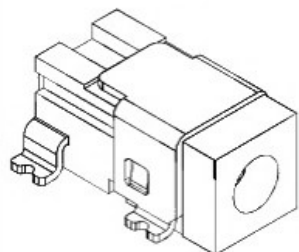
C

B

A

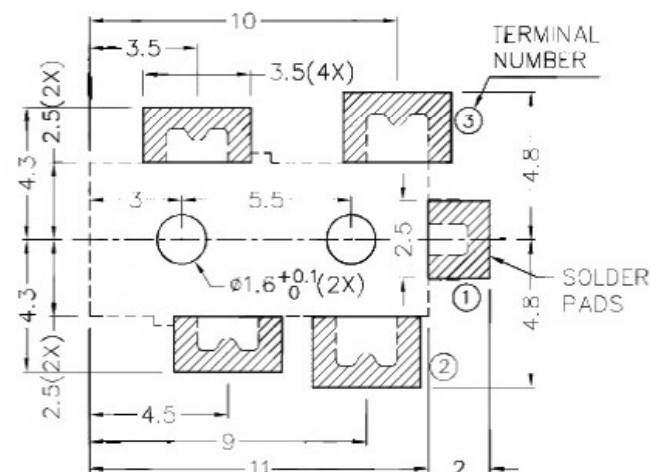
ZONE	SYMBOL	REVISION	APPROVAL	DATE
		ADJUST THE RECOMMENDED DC MATING PLUG	J.X.KUANG	8-10-2019

RoHS
Compliant



* MATERIAL

TERMINAL 1 : COPPER
 TERMINAL 2 : COPPER ALLOY
 TERMINAL 3 : BRASS
 SHIELD : COLD ROLLED STEEL
 HOUSING : HIGH TEMP. PLASTIC



RECOMMENDED PCB LAYOUT
 TOLERANCE: ±0.05
 (TOP VIEW)



RECOMMENDED
 DC MATING PLUG

SCHEMATIC	
CENTER PIN	∅0.650mm

广东科斯达开关厂

PART NAME	HIGH CURRENT SMD DC POWER SOCKET	TOLFRANCE UNLESS	0.0±0.2	UNIT:	
PART NO.		OTHERWISE SPECIFIED:	0.00±0.1 0.000±0.05	mm	

DESIGN	T.Y.LI	DATE	26-7-2004	SCALE	4:1
DRAWING	H.Q.ZHOJ	DATE	8-10-2019	MATERIAL	*
CHFK	H.L.TAN	DATE	8-10-2019	DWG. NO.	TZ\DC051DHS-A/1.1
APPROVAL		DATE		SHEET	

F

E

D

C

B

A