

F

E

D

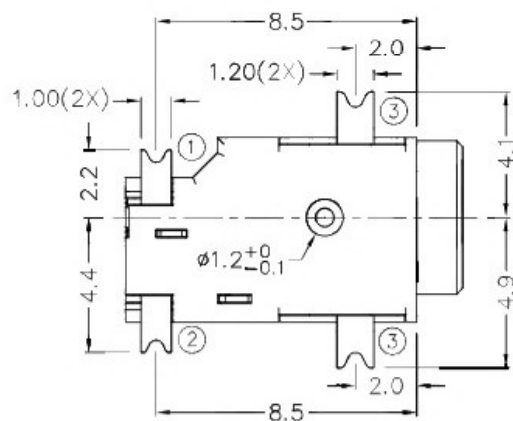
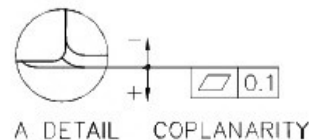
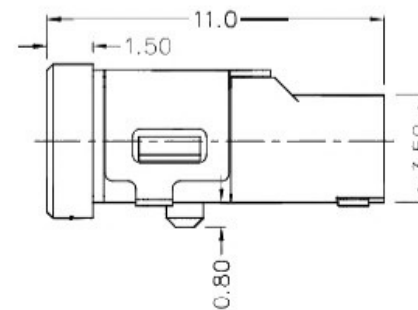
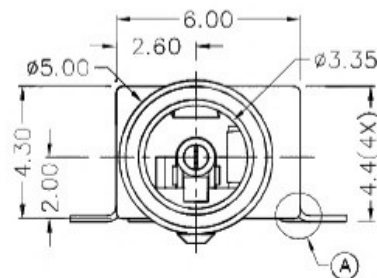
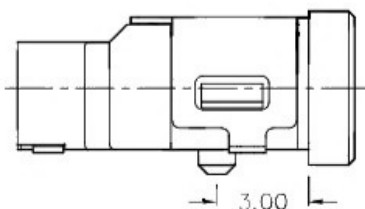
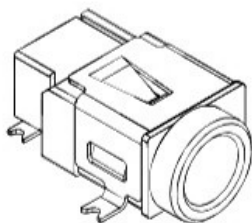
C

B

A

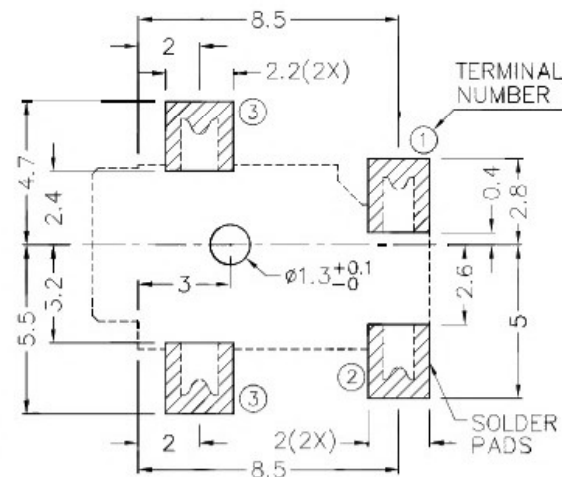
RoHS
Compliant

ZONE	SYMBOL	REVISION	APPROVAL	DATE
		ADJUST THE RECOMMENDED DC MATING PLUG	J.X.KUANG	8-10-2019

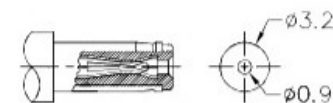
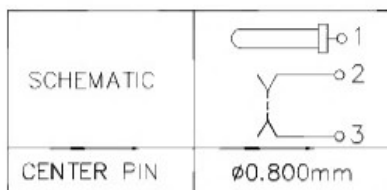


* MATERIAL

TERMINAL 1 : BRASS
 TERMINAL 2 : COPPER ALLOY
 TERMINAL 3 : COPPER ALLOY
 HOUSING : HIGH TEMP. PLASTIC



RECOMMENDED PCB LAYOUT
 TOLERANCE: ± 0.05
 (TOP VIEW)



RECOMMENDED
 DC MATING PLUG

DESIGN	J.X.KUANG	DATE	19-5-2004	SCALE	4:1
DRAWING	H.Q.ZHOU	DATE	8-10-2019	MATERIAL	*
CHECK	H.L.TAN	DATE	8-10-2019	DWG. NO.	TZ\DC042D-A/1.1
APPROVAL		DATE		SHEET	

PART NAME SMD DC POWER SOCKET

TOLERANCE UNLESS 0.0 ± 0.2 OTHERWISE SPECIFIED: 0.00 ± 0.1

UNIT: mm



F

E

D

C

B

A