

F

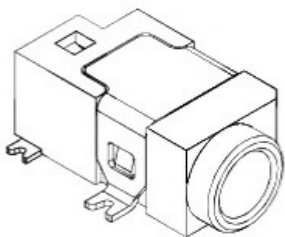
E

D

C

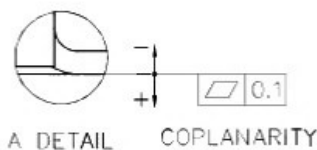
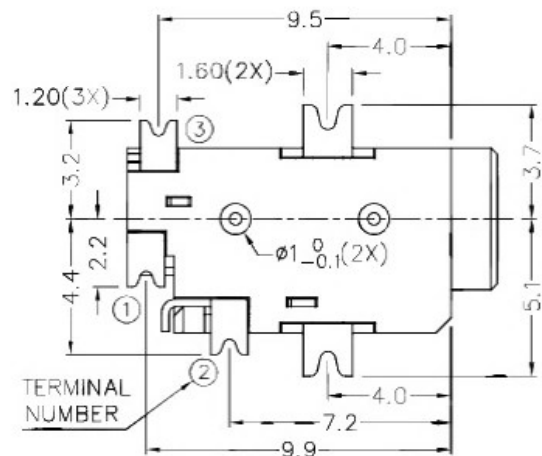
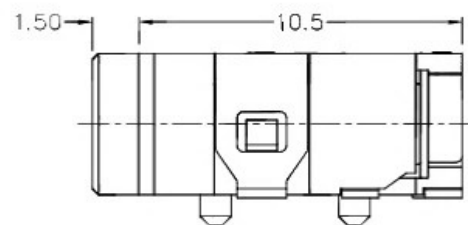
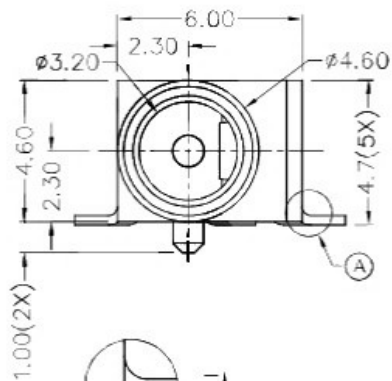
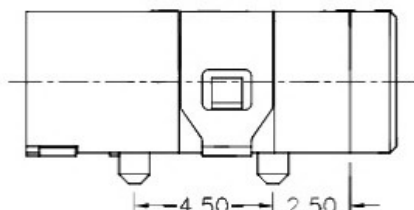
B

A



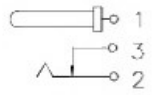
RoHS
Compliant

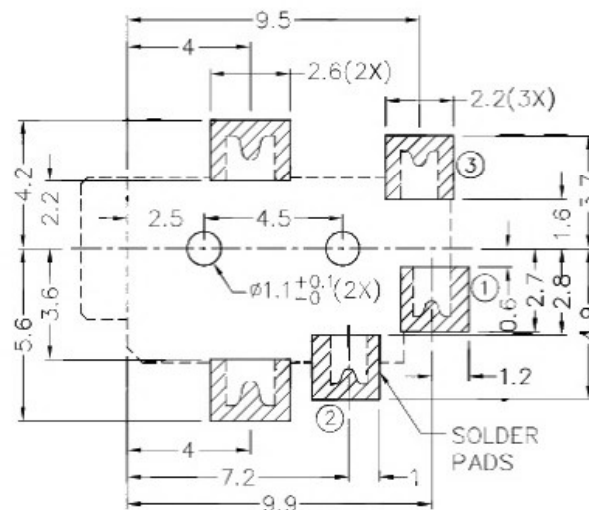
ZONE	SYMBOL	REVISION	APPROVAL	DATE
		ADJUST THE RECOMMENDED DC MATING PLUG	J.X.KUANG	8-10-2019



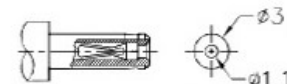
* MATERIAL

TERMINAL 1 : BRASS
 TERMINAL 2 : COPPER ALLOY
 TERMINAL 3 : BRASS
 SHIELD : C.R.STEEL
 HOUSING : HIGH TEMP. PLASTIC

SCHEMATIC	
CENTER PIN	ø1.000mm




RECOMMENDED PCB LAYOUT
 TOLERANCE: ±0.05
 (TOP VIEW)



RECOMMENDED
 DC MATING PLUG

 广东科斯达开关厂

PART NAME	SMD DC POWER SOCKET	TOLFRANCE UNLESS	0.0±0.2	UNIT:	
PART NO.		OTHERWISE SPECIFIED:	0.00±0.1 0.000±0.05	mm	

DESIGN	T.Y.LI	DATE	6-4-2006	SCALE	4:1
DRAWING	H.Q.ZHOU	DATE	8-10-2019	MATERIAL	*
CHFCCK	H.L.TAN	DATE	8-10-2019	DWG. NO.	TZ\DC067DS-A/1.1
APPROVAL		DATE		SHEET	

F

E

D

C

B

A