

F

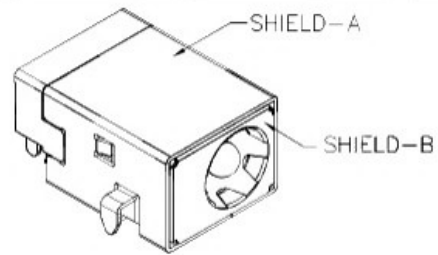
E

D

C

B

A

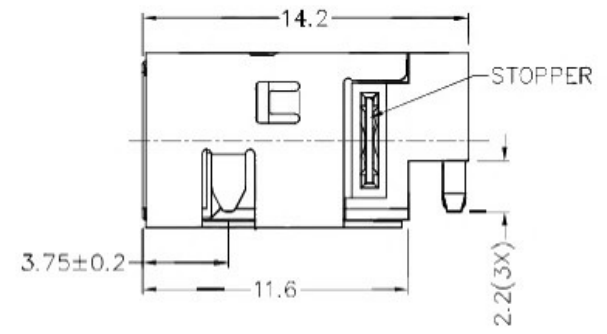
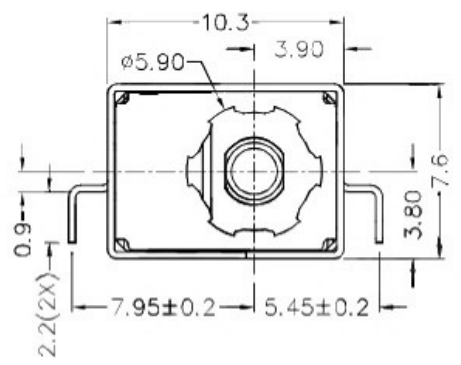
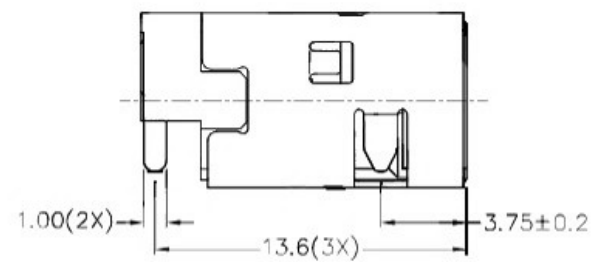


ZONE	SYMBOL	REVISION	APPROVAL	DATE

RoHS
Compliant

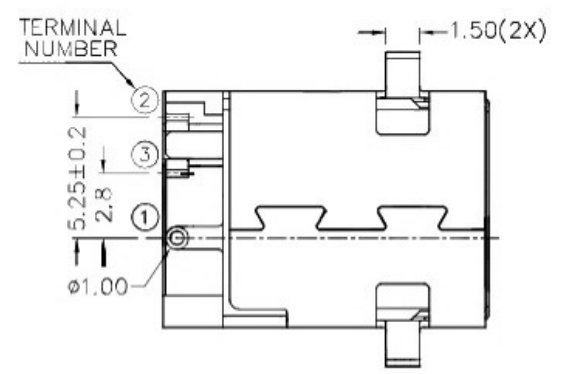
1

1



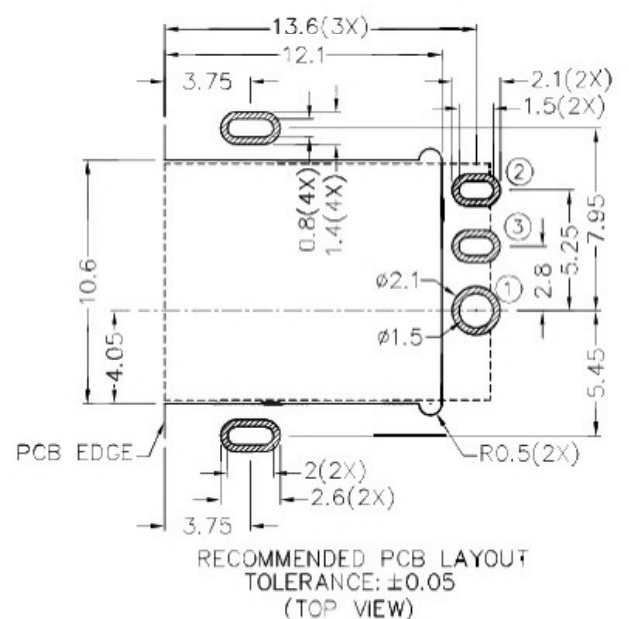
2

2



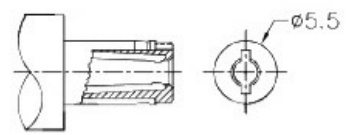
× MATERIAL




- TERMINAL 1 : BRASS
- TERMINAL 2 : COPPER ALLOY
- TERMINAL 3 : BRASS
- SHIELD-A : BRASS
- SHIELD-B : STAINLESS STEEL
- STOPPER : C.R.STEEL
- HOUSING : HIGH TEMP. PLASTIC



3

3



SCHEMATIC	 1
	 3
	 2
CENTER PIN	φ2mm
	φ2.5mm


4

4

DC MATE PLUG

 广东科斯达开关厂

DESIGN	Y.J.HUANG	DATE	13-12-2011	SCALE	3:1
DRAWING	H.L.TAN	DATE	10-11-2016	MATERIAL	*
CHECK	T.Y.LI	DATE	10-11-2016	DWG. NO.	tz\DC099DHS-A/1.0
APPROVAL		DATE		SHEET	

PART NAME	HIGH CURRENT SMD DC POWER SOCKET	TOLERANCE UNLESS	0.0±0.2	UNIT:	
PART NO.		OTHERWISE SPECIFIED:	0.00±0.1 0.000±0.05	mm	

F

E

D

C

B

A