

F

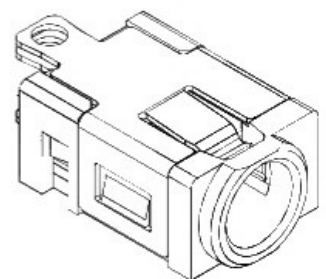
E

D

C

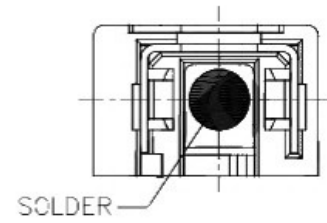
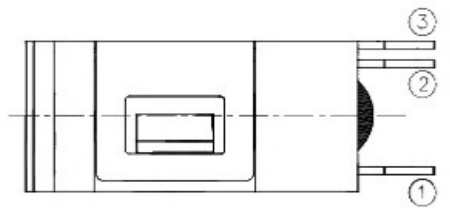
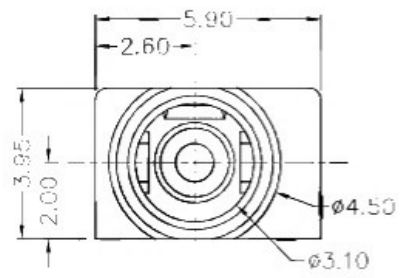
B

A



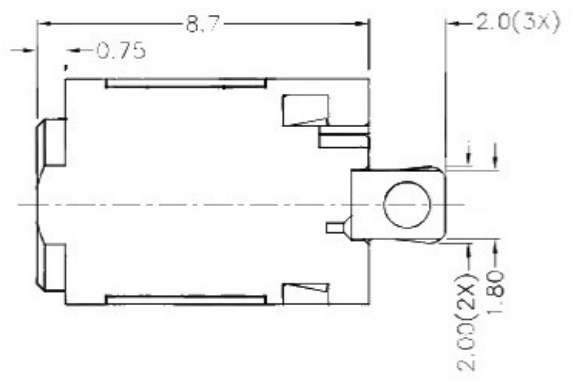
ZONE	SYMBOL	REVISION	APPROVAL	DATE
		ADJUST THE RECOMMENDED DC MATING PLUG	J.X.KUANG	8 10 2019

RoHS
Compliant



* MATERIAL

- CENTRE PIN : COPPER
- TERMINAL 1 : BRASS
- TERMINAL 2 : COPPER ALLOY
- TERMINAL 3 : COPPER ALLOY
- HOUSING : HIGH TEMP. PLASTIC



MODEL NO.	
SCHEMATIC	
CENTER PIN	Ø1.000mm



PART NAME		HIGH CURRENT DC POWER SOCKET		TOLERANCE UNLESS OTHERWISE SPECIFIED: 0.0±0.2, 0.00±0.1, 0.000±0.05		UNIT:		DESIGN	J.X.KUANG	DATE	23-4-2009	SCALE	5:1
PART NO.								DRAWING	F.Q.ZHOU	DATE	8-10-2019	MATERIAL	*
								CHKD	H.L.TAN	DATE	8-10-2019	DWG. NO.	TZ\DC082H-A/1.1
								APPROVAL		DATE		SHEET	

F

E

D

C

B

A