

SECTION A-A



MARK

SPEC:

A. Material:

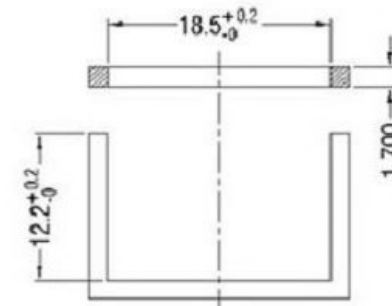
1. Housing: PA66 (HP)
2. Terminal: PHOSPHOR COPPER, TIN PLATED

B. Electrical Characteristics:

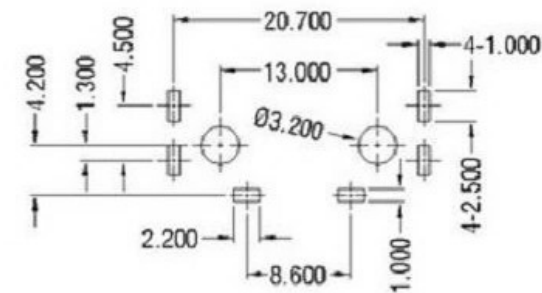
1. Rating: 2.5A 250V ~ (UL, CUL, GGG, VDE, DEMKO, NEMKO, SEMKO, FIMKO)
2. Electric Strength: AC 2,000 V FOR ONE MINUTE
3. Insulation Resistance: 100MΩ MIN, AT 500V DC

C. Approvals:

UL, CUL, GGG, VDE, DEMKO, NEMKO, SEMKO, FIMKO



PANEL CUT-OUT



PCB LAYOUT

普通公差

COMMON TOLERANCE :

UP TO 5	±0.20
ABOVE 5 TO 30	±0.30
ABOVE 30	±0.50
ANGULAR	±5°

单位
UNIT
mm
绘图
DRAWN BY
日期
DATE

林晓良
19.08.12

投影
PROJECTED
核对
CHECKED BY
核准
APPROVAL BY

张平
周培雷

品名
PRODUCT NAME
型号
MODEL NO.
料号
PART NO.

AC power socket
KSD-AC JACK

REV.	DATE	REVISION DESCRIPTION	ISSUE

广东科斯达电子科技有限公司
Guang dong Keside Electronic Technology Co., Ltd.