

**SPEC:**

A. Material:

1. Housing: PA66

2. Terminal: COPPER ALLOY, TIN PLATED

B. Electrical Characteristics:

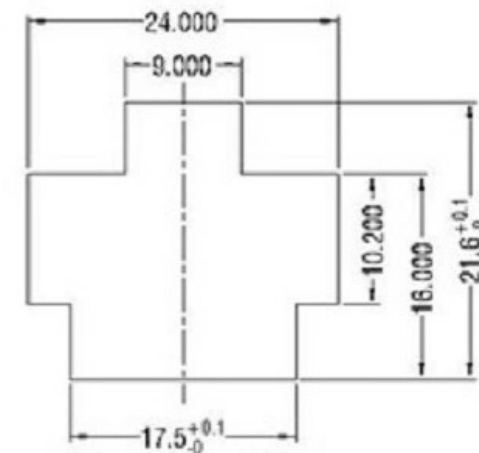
1. Rating: 15A 125V~ (UL,CUL)

2. Electric Strength: AC 2,000 V FOR ONE MINUTE

3. Insulation Resistance: 100MΩ MIN, AT 500V DC

C. Approvals:

UL, CUL



**PANEL CUT-OUT**

普通公差

COMMON TOLERANCE :

UP TO 5	±0.20
ABOVE 5 TO 30	±0.30
ABOVE 30	±0.50
ANGULAR	±5°

单位  
UNIT  
mm  
绘图  
DRAWN BY  
日期  
DATE

林晓良  
19.08.12

投影  
PROJECTED  
核对  
CHECKED BY  
核准  
APPROVAL BY

张平  
周培雷

品名  
PRODUCT NAME  
型号  
MODEL NO.  
料号  
PART NO.

AC power socket  
KSD-AC JACK

REV.	DATE	REVISION DESCRIPTION	ISSUE

**广东科斯达电子科技有限公司**  
Guang dong Keside Electronic Technology Co., Ltd.