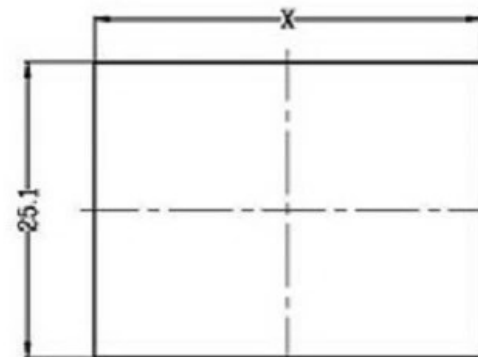
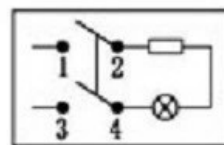


1. FUNCTION: OFF-ON
OFF-ON
2. RATING: UL: 20(8)A 125/250VAC 25T125/55 5B4
KC/CQC: 16(4)A 250VAC T105
ENEC VDE: 16(4)A 250VAC T105/55
3. OPERATION FORCE: 650±350g.f
4. CONTACT RESISTANCE: ≤ 50 mΩ
5. INSULATION RESISTANCE: ≥ 100 MΩ
6. DIELECTRIC WITHSTAND: TERMINAL TO BUTTON 3000VAC/5mA/1MIN/TUE
TERMINAL TO TERMINAL 1500VAC/5mA/1MIN/TUE

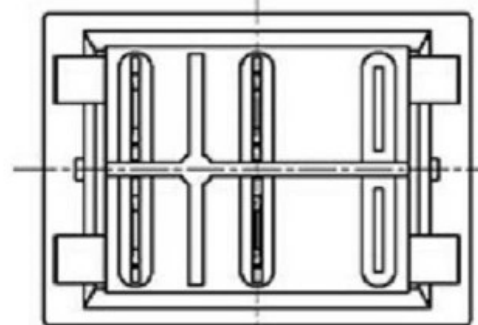
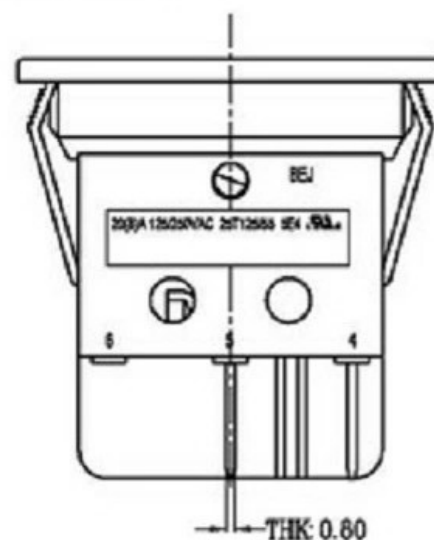
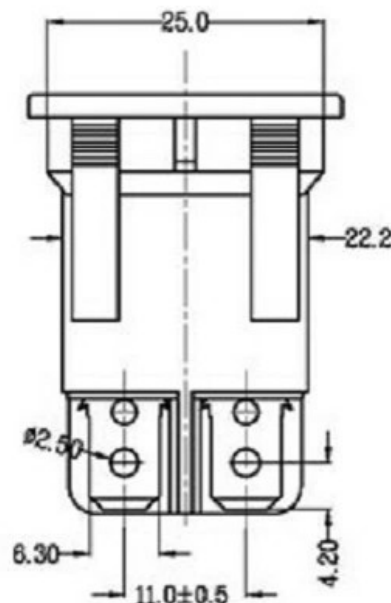
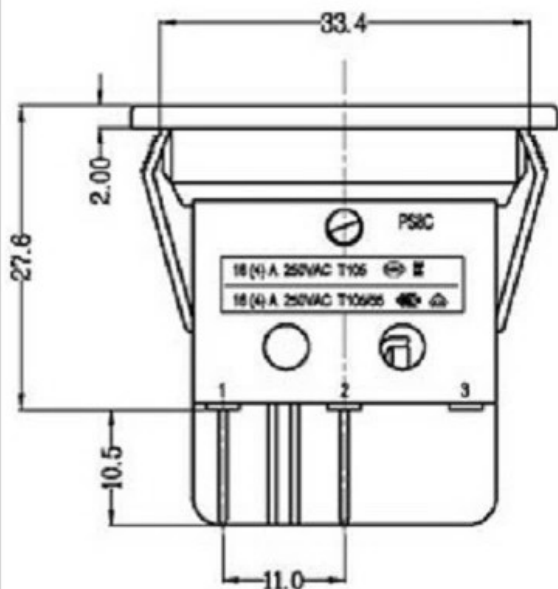
8. SUGGESTED PANEL HOLE SIZE:

PANEL THICKNESS	DIM. X
0.70~1.30	33.4/33.5
1.65~2.15	33.5/33.7
2.5~3.0	33.6/33.9

7. CIRCUIT DIAGRAM:



PANEL CUT-OUT



A4				普通公差:	 广东科斯达电子科技有限公司 Guang dong Keside Electronic Technology Co., Ltd.							
A3				COMMON TOLERANCE :								
A2				UP TO 5	±0.20	单位	mm	投影	品名	跷板开关	比例	Free
A1				ABOVE 5 TO 30	±0.30	绘图	周金勇	核 对	梁金勇	型号		
				ABOVE 30	±0.50	DRAWN BY		CHECKED BY		MODEL NO.		
REV.	DATE	REVISION DESCRIPTION	ISSUE	ANGULAR	±5°	日期	2015.8.17	核 准	周培雷	图号	KSD-AC SWITCH	
						DATE		APPROVAL BY		DWG NO.		